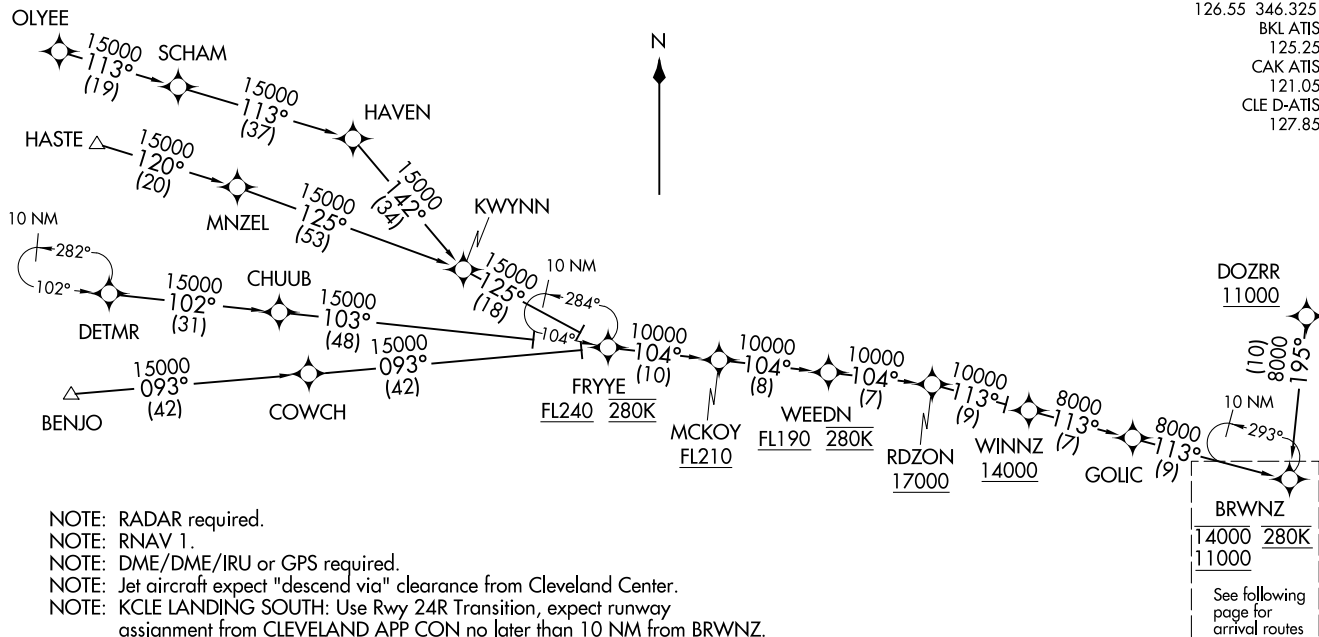


BRWNZ FOUR ARRIVAL (RNAV) Transition Routes
(BRWNZ.BRWNZ4) 22APR21

CLEVELAND, OHIO

CLEVELAND APP CON
126.55 346.325
BKL ATIS
125.25
CAK ATIS
121.05
CLE D-ATIS
127.85



- NOTE: RADAR required.
NOTE: RNAV 1.
NOTE: DME/DME/IRU or GPS required.
NOTE: Jet aircraft expect "descend via" clearance from Cleveland Center.
NOTE: KCLE LANDING SOUTH: Use Rwy 24R Transition, expect runway assignment from CLEVELAND APP CON no later than 10 NM from BRWNZ.
NOTE: KCLE LANDING NORTH: Use Rwy 6L Transition, expect runway assignment from CLEVELAND APP CON no later than 10 NM from BRWNZ.
NOTE: OLYEE TRANSITION: Do not file - to be assigned by ATC.
NOTE: DOZRR TRANSITION: Except for flights originating in Canada, do not file - to be assigned by ATC.
NOTE: BENJO TRANSITION: For use by turbojet aircraft only.
NOTE: WINNZ TRANSITION: For Detroit Metropolitan Area departures only.

NOTE: Chart not to scale.

(CONTINUED ON FOLLOWING PAGE)

BENJO TRANSITION (BENJO.BRWNZ4)
DETMR TRANSITION (DETMR.BRWNZ4)
DOZRR TRANSITION (DOZRR.BRWNZ4)
FRYEE TRANSITION (FRYEE.BRWNZ4)
HASTE TRANSITION (HASTE.BRWNZ4)
OLYEE TRANSITION (OLYEE.BRWNZ4)
WINNZ TRANSITION (WINNZ.BRWNZ4)

(BRWNZ.BRWNZ4) 22139
BRWNZ FOUR ARRIVAL (RNAV) Transition Routes

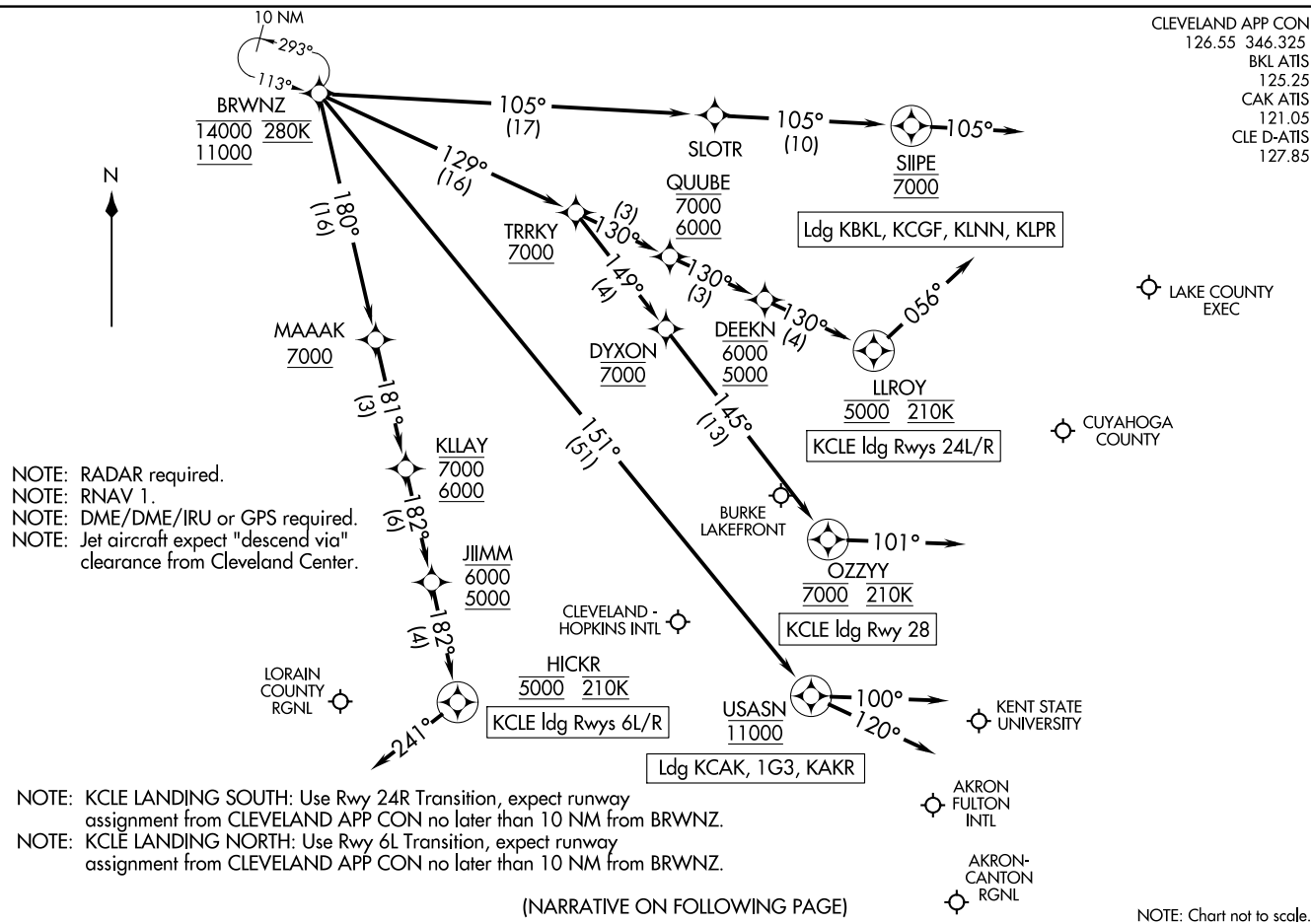
AL-84 (FAA)

CLEVELAND, OHIO

BRWNZ FOUR ARRIVAL (RNAV) Arrival Routes

(BRWNZ, BRWNZ4) 22APR21

CLEVELAND, OHIO



BRWNZ FOUR ARRIVAL (RNAV) Arrival Routes

(BRWNZ, BRWNZ4) 23110

CLEVELAND, OHIO

AL-84 (FAA)

CLEVELAND APP CON
126.55 346.325
BKL ATIS
125.25
CAK ATIS
121.05
CLE D-ATIS
127.85

ARRIVAL ROUTE DESCRIPTION

LANDING KCLE RUNWAYS 6L/R: From BRWNZ on track 180° to cross MAAAK at or above 7000, then on track 181° to cross KLLAY between 6000 and 7000, then on track 182° to cross JIIMM between 5000 and 6000, then on track 182° to cross HICKR at 5000 and at 210K, then on heading 241° or as assigned by ATC. Expect ILS, RNAV (RNP), or RNAV (GPS) approach from HICKR, or RADAR vectors to final approach course.

LANDING KCLE RUNWAYS 24L/R: From BRWNZ on track 129° to cross TRRKY at or above 7000, then on track 130° to cross QUUBE between 6000 and 7000, then on track 130° to cross DEEKN between 5000 and 6000, then on track 130° to cross LLROY at 5000 and at 210K, then on heading 056° or as assigned by ATC. Expect ILS, RNAV (RNP), or RNAV (GPS) approach from LLROY, or RADAR vectors to final approach course.

LANDING KCLE RUNWAY 28: From BRWNZ on track 129° to cross TRRKY at or above 7000, then on track 149° to cross DYXON at 7000, then on track 145° to cross OZZYY at 7000 and at 210K, then on heading 101° or as assigned by ATC. Expect RADAR vectors to final approach course.

LANDING 1G3/KAKR: From BRWNZ on track 151° to cross USASN at 11000, then on track 100°. Expect RADAR vectors to final approach course.

LANDING KLPR/KLNN/KCGF/KBKL: From BRWNZ on track 105° to SLOTR, then on track 105° to cross SIPE at 7000, then on track 105°. Expect RADAR vectors to final approach course.

LANDING KCAK: From BRWNZ on track 151° to cross USASN at 11000, then on track 120°. Expect RADAR vectors to final approach course.