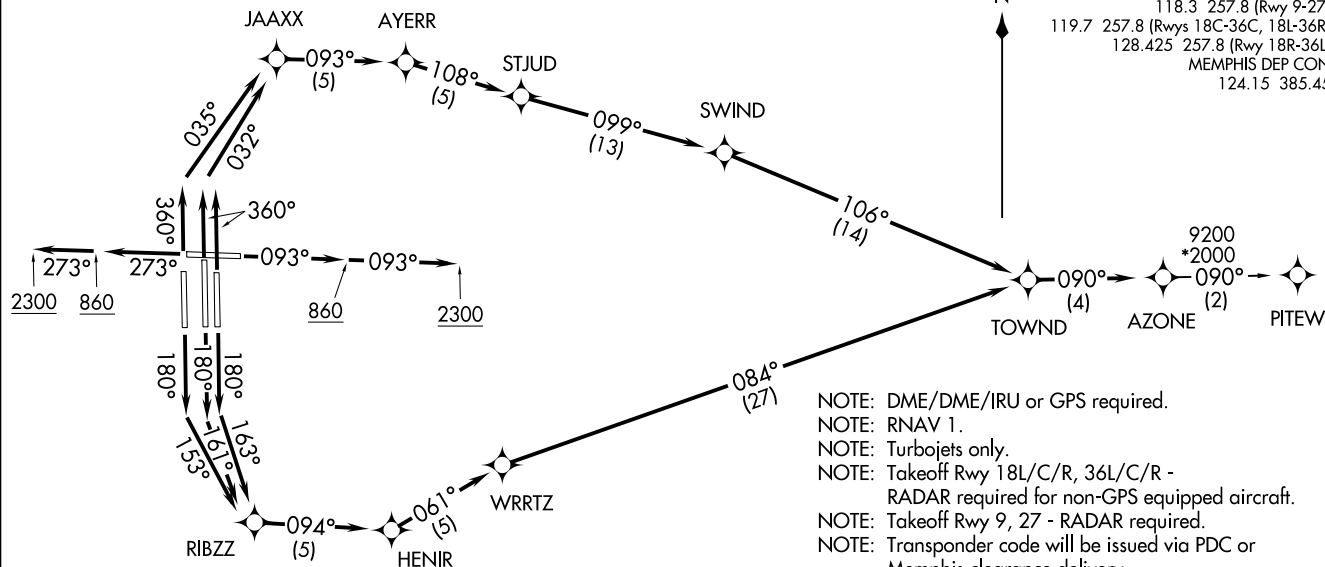


(AZONE7, AZONE) 31 DEC 20

AZONE SEVEN DEPARTURE (RNAV)

MEMPHIS, TENNESSEE  
MEMPHIS INTL (MEM)**TOP ALTITUDE:**  
**5000****TAKEOFF MINIMUMS:**

Rwy 9, 18L/C/R, 27, 36L/C/R: Standard with minimum climb of 500' per NM to 860.

NOTE: Chart not to scale.

(NARRATIVE ON FOLLOWING PAGE)

D-ATIS  
127.75  
CLNC DEL  
125.2  
CPDLC  
GND CON  
121.0 379.2 (Rwy 9-27)  
121.9 379.2 (Rwys 18C-36C, 18L-36R)  
121.65 379.2 (Rwy 18R-36L)  
MEMPHIS TOWER  
118.3 257.8 (Rwy 9-27)  
119.7 257.8 (Rwys 18C-36C, 18L-36R)  
128.425 257.8 (Rwy 18R-36L)  
MEMPHIS DEP CON  
124.15 385.45

NOTE: DME/DME/IRU or GPS required.

NOTE: RNAV 1.

NOTE: Turbojets only.

NOTE: Takeoff Rwy 18L/C/R, 36L/C/R -  
RADAR required for non-GPS equipped aircraft.

NOTE: Takeoff Rwy 9, 27 - RADAR required.

NOTE: Transponder code will be issued via PDC or  
Memphis clearance delivery.NOTE: Accelerate to 250K, reaching 10000 MSL, maintain  
250K or greater, if unable advise ATC.NOTE: Procedure not authorized when Columbus 4  
MOA active.NOTE: If unable to accept climb rate, advise ATC on  
initial contact.

(AZONE7, AZONE) 20366

AL-253 (FAA)  
AZONE SEVEN DEPARTURE (RNAV)MEMPHIS INTL (MEM)  
MEMPHIS, TENNESSEE



DEPARTURE ROUTE DESCRIPTION

TAKEOFF RUNWAY 9: Climb on heading 093° to 860, then continue climb to 2300 on heading 093° or as assigned by ATC, for vectors to TOWND, then on depicted route to AZONE, thence....

TAKEOFF RUNWAY 18C: Climb on heading 180° to intercept course 161° to RIBZZ, then on depicted route to AZONE, thence....

TAKEOFF RUNWAY 18L: Climb on heading 180° to intercept course 163° to RIBZZ, then on depicted route to AZONE, thence....

TAKEOFF RUNWAY 18R: Climb on heading 180° to intercept course 153° to RIBZZ, then on depicted route to AZONE, thence....

TAKEOFF RUNWAY 27: Climb on heading 273° to 860, then continue climb to 2300 on heading 273° or as assigned by ATC, for vectors to TOWND, then on depicted route to AZONE, thence....

TAKEOFF RUNWAY 36L: Climb on heading 360° to intercept course 035° to JAAXX, then on depicted route to AZONE, thence....

TAKEOFF RUNWAYS 36C/R: Climb on heading 360° to intercept course 032° to JAAXX, then on depicted route to AZONE, thence....

....maintain 5000. Expect clearance to filed altitude within ten (10) minutes after departure.

PITEW TRANSITION (AZONE7.PITEW):

SE-1, 21 MAR 2024 to 18 APR 2024

SE-1, 21 MAR 2024 to 18 APR 2024