

(DORRL2.DORRL) 24081
DORRL TWO DEPARTURE (RNAV)

AL-257 (FAA)

MIAMI INTL (MIA)
MIAMI, FLORIDA

MIAMI DEP CON
119.45 290.325
D-ATIS
133.675
CLNC DEL
135.35
CPDLC
GND CON
(Rwys 8L/8R, 12,
121.8 348.6
(Rwys 9, 27, 30)
127.5 348.6
MIAMI TOWER
118.3 256.9

**TOP ALTITUDE:
ASSIGNED BY ATC**

RNAV 1 - DME/DME/IRU or GPS.

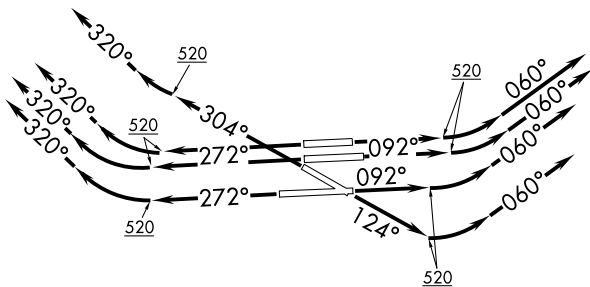
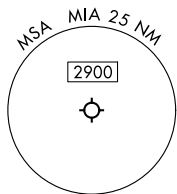
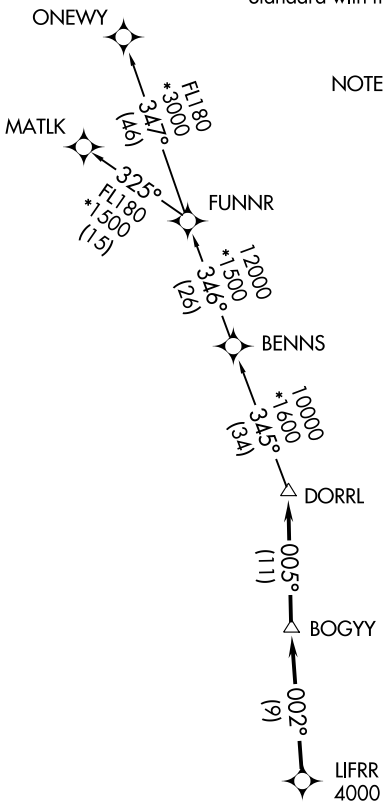
RADAR required.

TAKEOFF MINIMUMS

Rwys 8L/R, 9, 12, 26L/R, 27, 30:

Standard with minimum climb of 500'/NM to 520.

NOTE: For turbo-props/props filed at or above 13000.



(CONTINUED ON FOLLOWING PAGE)

NOTE: Chart not to scale.

DORRL TWO DEPARTURE (RNAV)

(DORRL2.DORRL) 21MAR24

MIAMI, FLORIDA
MIAMI INTL (MIA)

SE-3, 21 MAR 2024 to 18 APR 2024



DEPARTURE ROUTE DESCRIPTION
SEE ADDITIONAL REQUIREMENTS ON AAUP

TAKEOFF RUNWAYS 8L/R, 9: Climb on heading 092° to 520, then climbing left turn heading 060° or as assigned by ATC for vectors to cross LIFRR at or above 4000, thence. . . .

TAKEOFF RUNWAY 12: Climb on heading 124° to 520, then climbing left turn heading 060° or as assigned by ATC for vectors to cross LIFRR at or above 4000, thence. . . .

TAKEOFF RUNWAYS 26L/R, 27: Climb on heading 272° to 520, then climbing right turn heading 320° or as assigned by ATC for vectors to cross LIFRR at or above 4000, thence. . . .

TAKEOFF RUNWAY 30: Climb on heading 304° to 520, then climbing right turn heading 320° or as assigned by ATC for vectors to cross LIFRR at or above 4000, thence. . . .

. . . .on track 002° to BOGY, then on track 005° to DORRL then on (transition), maintain altitude as assigned by ATC, expect filed altitude 10 minutes after departure.

MATLK TRANSITION (DORRL2.MATLK)
ONEWY TRANSITION (DORRL2.ONEWY)

SE-3, 21 MAR 2024 to 18 APR 2024

SE-3, 21 MAR 2024 to 18 APR 2024