

AL-739 (FAA)

## SSYKO THREE DEPARTURE (RNAV)

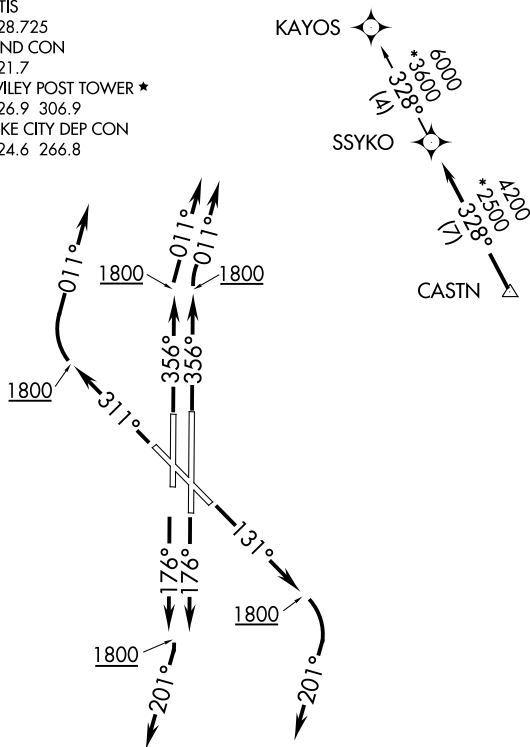
WILEY POST (PWA)  
OKLAHOMA CITY, OKLAHOMA

ATIS  
 128.725  
 GND CON  
 121.7  
 WILEY POST TOWER ★  
 126.9 306.9  
 OKE CITY DEP CON  
 124.6 266.8

**TOP ALTITUDE:  
ASSIGNED BY ATC**

TAKEOFF MINIMUMS:

Rwys 13, 17L/R, 31, 35L/R:  
Standard with minimum climb  
of 500' per NM to 2100.



NOTE: RADAR required.  
NOTE: DME/DME/IRU or GPS required.  
NOTE: RNAV 1.

NOTE: Chart not to scale.

## DEPARTURE ROUTE DESCRIPTION

**TAKEOFF RWY 13:** Climb heading 131° to 1800, then right turn heading 201° or as assigned by ATC, expect RADAR vectors to CASTN, thence . . .

**TAKEOFF RWYS 17L/R:** Climb on heading 176° to 1800, then right turn heading 201° or as assigned by ATC, expect RADAR vectors to CASTN, thence . . . .

**TAKEOFF RWY 31:** Climb on heading 311° to 1800, then right turn heading 011° or as assigned by ATC, expect RADAR vectors to CASTN, thence . . . .

**TAKEOFF RWY 35L:** Climb on heading 356° to 1800, then heading 011° or as assigned by ATC, expect RADAR vectors to CASTN, thence . . .

TAKEOFF RWY 35R: Climb on heading 356° to 1800, then right turn heading 011° or as assigned by ATC, expect RADAR vectors to CASTN, thence . . .

... on track 328° to SSYKO, then on (transition). Maintain 3000 or as assigned by ATC. Expect filed altitude 10 minutes after departure.

### KAYOS TRANSITION (SSYKO3.KAYOS):

SSYKO THREE DEPARTURE (RNAV)

(SSYKO3.SSYKO) 07DEC17

OKLAHOMA CITY, OKLAHOMA  
WILEY POST (PWA)

SC-1, 21 MAR 2024 to 18 APR 2024