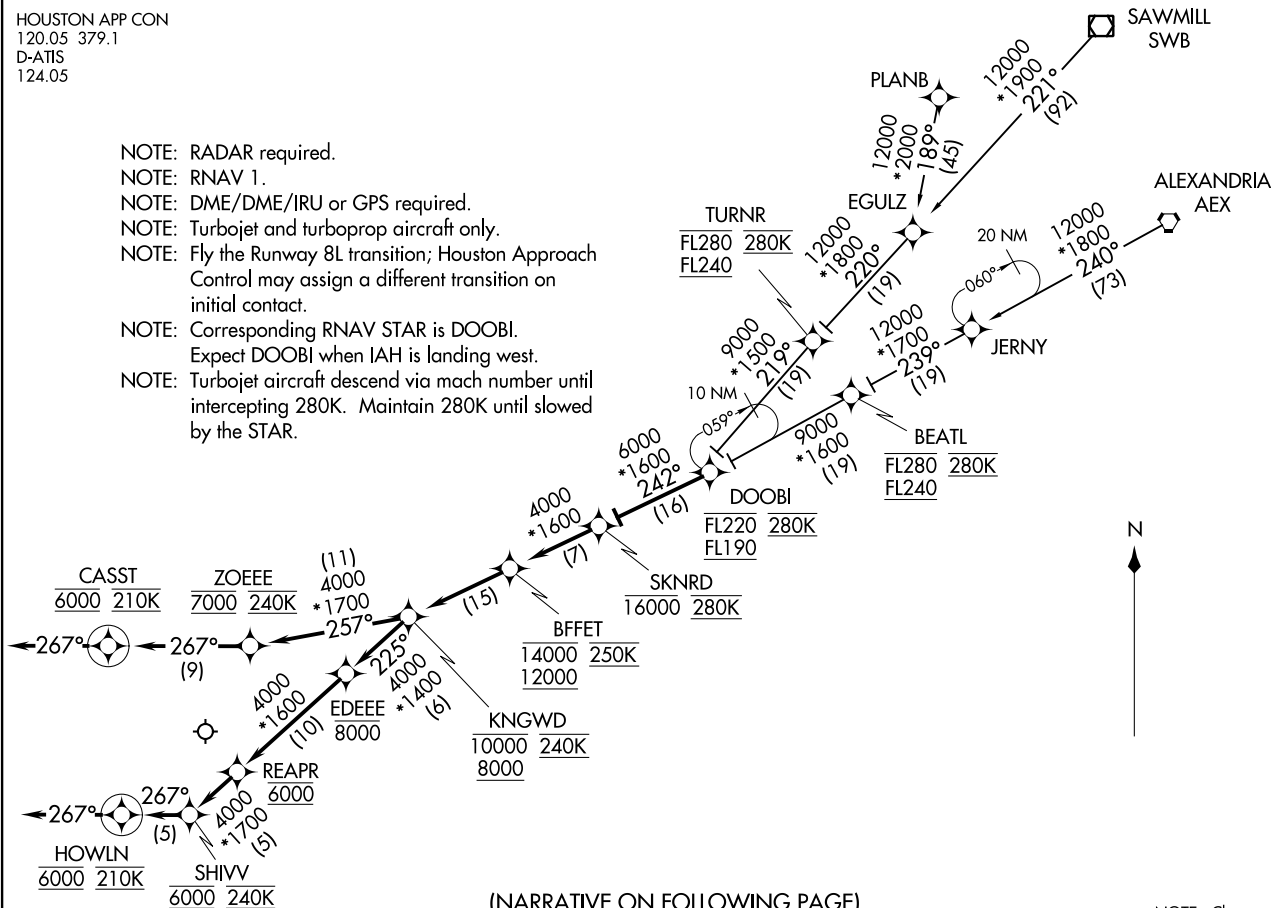


SKNRD FOUR ARRIVAL (RNAV)  
(DOOBI, SKNRD4) 25JUN15

GEORGE BUSH INTCNL/HOUSTON (IAH)  
HOUSTON, TEXAS

HOUSTON APP CON  
120.05 379.1  
D-ATIS  
124.05

- NOTE: RADAR required.  
NOTE: RNAV 1.  
NOTE: DME/DME/IRU or GPS required.  
NOTE: Turbojet and turboprop aircraft only.  
NOTE: Fly the Runway 8L transition; Houston Approach Control may assign a different transition on initial contact.  
NOTE: Corresponding RNAV STAR is DOOBI.  
NOTE: Expect DOOBI when IAH is landing west.  
NOTE: Turbojet aircraft descend via mach number until intercepting 280K. Maintain 280K until slowed by the STAR.



NOTE: Chart not to scale.

(DOOBI, SKNRD4) 21112  
SKNRD FOUR ARRIVAL (RNAV) AL-5461 (FAA)  
GEORGE BUSH INTCNL/HOUSTON (IAH)  
HOUSTON, TEXAS

ARRIVAL ROUTE DESCRIPTION

- ALEXANDRIA TRANSITION (AEX.SKNRD4):
- PLANB TRANSITION (PLANB.SKNRD4):
- SAWMILL TRANSITION (SWB.SKNRD4):

From DOOBI on track 242° to cross SKNRD at or below 16000 and at 280K.

LANDING RUNWAY 8L: From SKNRD on track 242° to cross BFFET at or above 12000 and, at or below 14000 and at 250K, then on track 242° to cross KNGWD at or above 8000, at or below 10000 and at 240K, then on track 257° to cross ZOEEE at 7000 and at 240K, then on track 267° to cross CASST at 6000 and at 210K, then on track 267°. Expect RADAR vectors to final approach course.

LANDING RUNWAYS 8R, 9: From SKNRD on track 242° to cross BFFET at or above 12000, at or below 14000 and at 250K, then on track 242° to cross KNGWD at or above 8000, at or below 10000 and at 240K, then on track 225° to cross EDEEE at or below 8000, then on track 225° to cross REAPR at 6000, then on track 225° to cross SHIVV at 6000 and at 240K, then on track 267° to cross HOWLN at 6000 and at 210K, then on track 267°. Expect RADAR vectors to final approach course.