

SNDIA FOUR ARRIVAL (RNAV)

ALBUQUERQUE, NEW MEXICO

AL-12 (FAA)

D-ATIS
118.0 257.7
ALBUQUERQUE APP CON
123.9 354.1

NOTE: RADAR required.

NOTE: RNAV 1.

NOTE: DME/DME/IRU or GPS required.

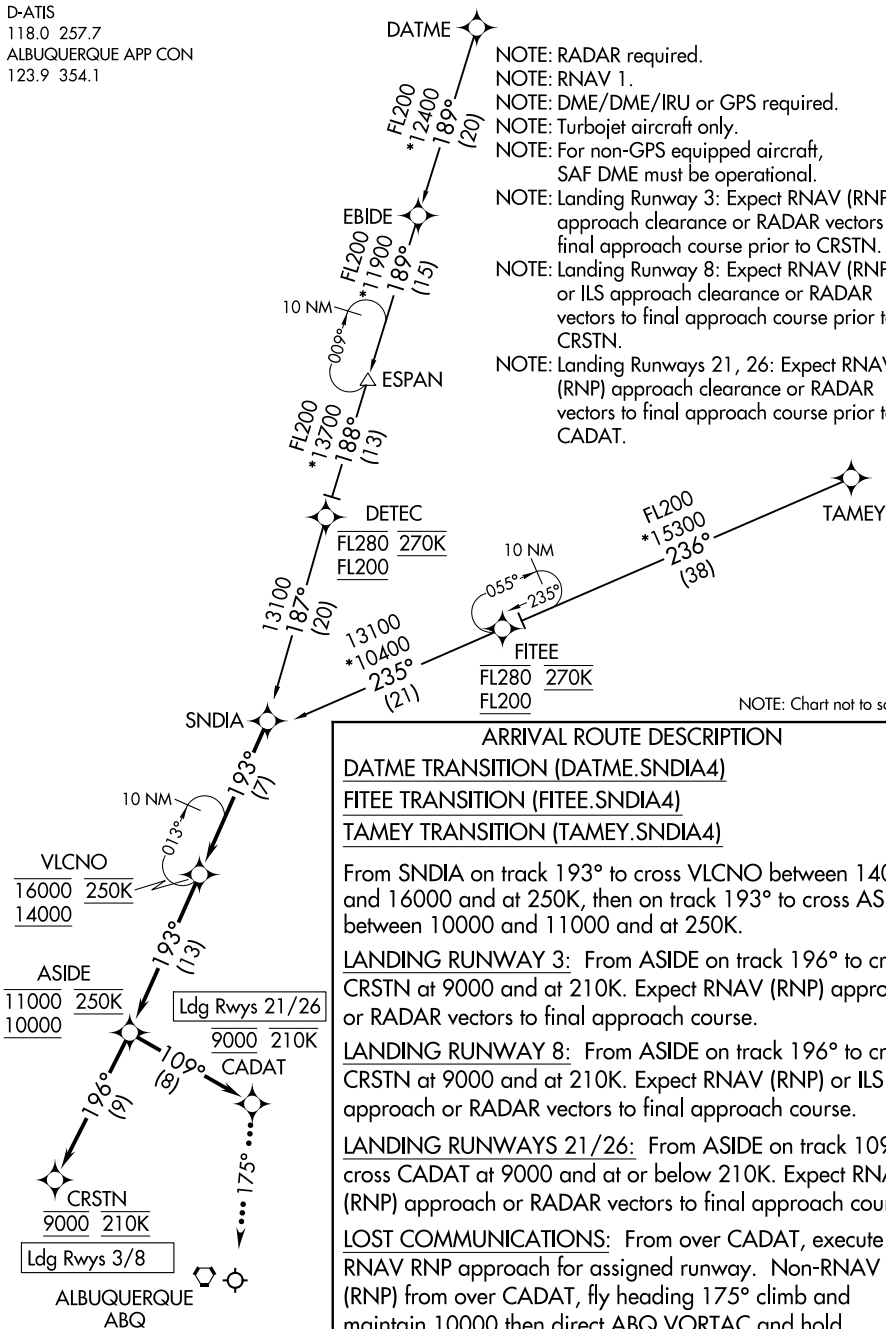
NOTE: Turbojet aircraft only.

NOTE: For non-GPS equipped aircraft,
SAF DME must be operational.

NOTE: Landing Runway 3: Expect RNAV (RNP)
approach clearance or RADAR vectors to
final approach course prior to CRSTN.

NOTE: Landing Runway 8: Expect RNAV (RNP)
or ILS approach clearance or RADAR
vectors to final approach course prior to
CRSTN.

NOTE: Landing Runways 21, 26: Expect RNAV
(RNP) approach clearance or RADAR
vectors to final approach course prior to
CADAT.



NOTE: Chart not to scale.

ARRIVAL ROUTE DESCRIPTION

DATME TRANSITION (DATME.SNDIA4)

FITEE TRANSITION (FITEE.SNDIA4)

TAMEY TRANSITION (TAMEY.SNDIA4)

From SNDIA on track 193° to cross VLCNO between 14000 and 16000 and at 250K, then on track 193° to cross ASIDE between 10000 and 11000 and at 250K.

LANDING RUNWAY 3: From ASIDE on track 196° to cross CRSTN at 9000 and at 210K. Expect RNAV (RNP) approach or RADAR vectors to final approach course.

LANDING RUNWAY 8: From ASIDE on track 196° to cross CRSTN at 9000 and at 210K. Expect RNAV (RNP) or ILS approach or RADAR vectors to final approach course.

LANDING RUNWAYS 21/26: From ASIDE on track 109° to cross CADAT at 9000 and at or below 210K. Expect RNAV (RNP) approach or RADAR vectors to final approach course.

LOST COMMUNICATIONS: From over CADAT, execute RNAV RNP approach for assigned runway. Non-RNAV (RNP) from over CADAT, fly heading 175° climb and maintain 10000 then direct ABQ VORTAC and hold.

SNDIA FOUR ARRIVAL (RNAV)

(SNDIA.SNDIA4) 31DEC20

ALBUQUERQUE, NEW MEXICO

ALBUQUERQUE INTL SUNPORT (ABQ)

SW-1, 18 APR 2024 to 16 MAY 2024

SW-1, 18 APR 2024 to 16 MAY 2024