

CHARLOTTE APP CON  
126.15 282.325  
D-ATIS ARR  
121.15

- NOTE: RADAR required.  
NOTE: RNAV 1.  
NOTE: DME/DME/IRU or GPS required.  
NOTE: Turbojet aircraft only.  
NOTE: Descend via MACH number until intercepting 280K. Maintain 280K until slowed by the STAR or assigned by ATC.  
NOTE: Expect "descend via" clearance and landing direction assignment (north or south) by ARTCC.  
For vertical navigation planning, landing south, select Rwy 18L, landing north, select Rwy 36R.  
NOTE: NUUMN TRANSITION ATC assigned only.  
NOTE: CLT approach will assign landing runway.

LYNCHBURG  
LYH

FL180  
\*4000  
221°  
(17)

BEMOH

FL180  
\*4000  
221°  
(16)

10 NM  
041°  
WRLLD

17000  
\*4000  
221°  
(22)

10 NM  
041°  
BLUEJ  
FL270

BURRZ  
FL270 280K  
FL240

15000  
\*3800  
221°  
(12)

13000  
\*3400  
221°  
(6)

SKLES  
FL220 280K

DENTT  
16000 270K

13000  
\*3500  
221°  
(20)

BOOTS  
FL230 13000

13000  
\*3000  
221°  
(8)

13000  
\*2200  
221°  
(3)

CHSLY  
FL220 13000  
250K

10 NM  
041°

WLLSH  
16000 270K

13000  
\*3100  
265°  
(19)

NUUMN

13000  
\*2900  
246°  
(24)

13000  
\*2900  
272°  
(6)

SHANZ

SDAIL  
FL230 17000  
280K

FEDOX

10 NM  
091°

16000  
\*2900  
271°  
(8)

PELTS

10 NM  
087°  
16000  
\*2900  
267°  
(63)

COUPN

16000  
\*2500  
247°  
(65)

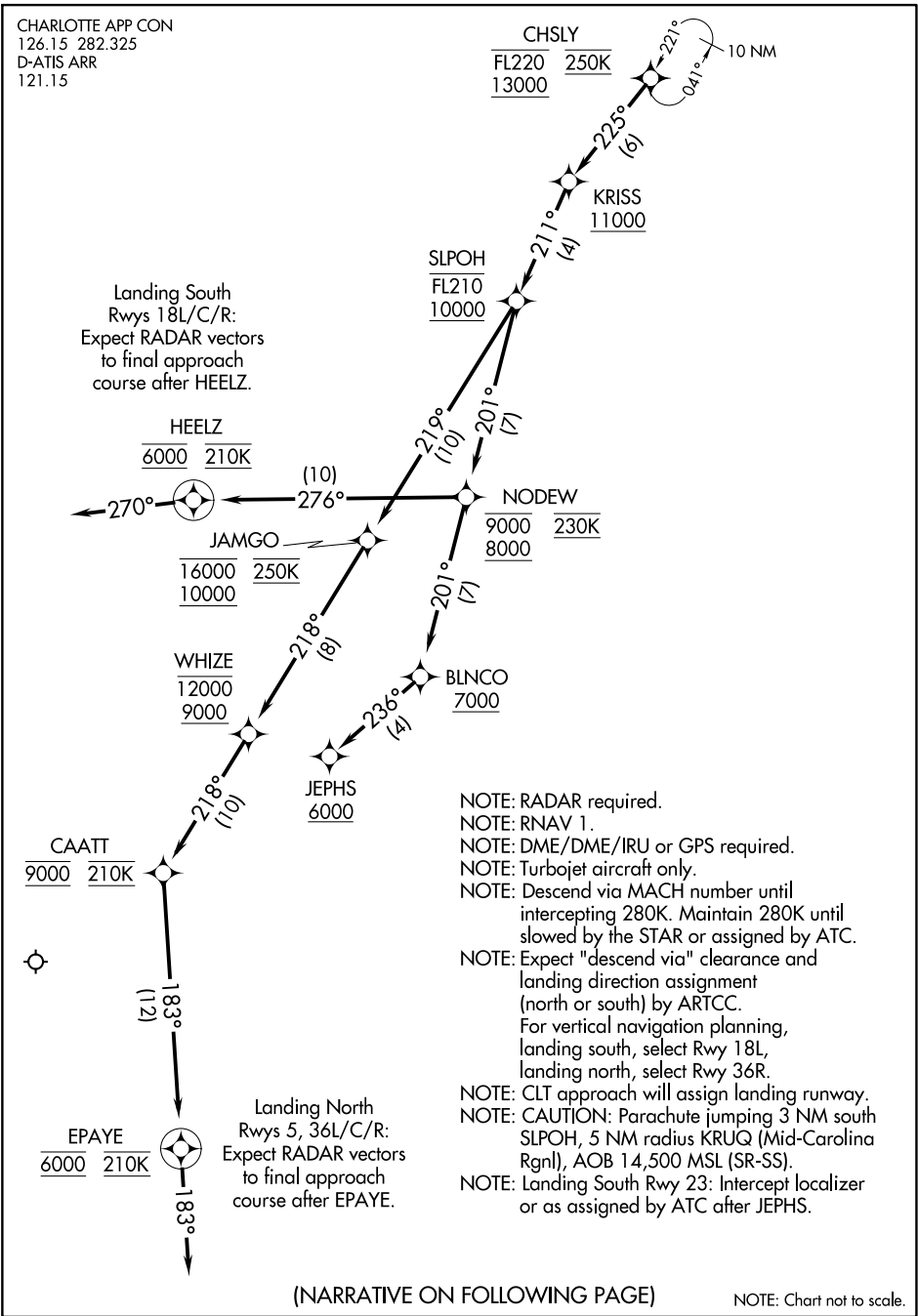
COUPN TRANSITION (COUPN.CHSLY5)  
LYNCHBURG TRANSITION (LYH.CHSLY5)  
NUUMN TRANSITION (NUUMN.CHSLY5)  
SDAIL TRANSITION (SDAIL.CHSLY5)

(CONTINUED ON FOLLOWING PAGES)

NOTE: Chart not to scale.

SE-2, 18 APR 2024 to 16 MAY 2024

SE-2, 18 APR 2024 to 16 MAY 2024



ARRIVAL ROUTE DESCRIPTION

From CHSLY on track 225° to cross KRISS at or above 11000, then on track 211° to cross SLPOH between 10000 and FL210.

LANDING RUNWAYS 5, 36L/C/R: From SLPOH on track 219° to cross JAMGO between 10000 and 16000 and at 250K, then on track 218° to cross WHIZE between 9000 and 12000, then on track 218° to cross CAATT at 9000 and at 210K, then on track 183° to cross EPAYE at 6000 and at 210K, then on track 183°. Expect RADAR vectors to final approach course.

LANDING RUNWAYS 18L/C/R: From SLPOH on track 201° to cross NODEW between 8000 and 9000 and at 230K, then on track 276° to cross HEELZ at 6000 and at 210K, then on track 270°. Expect RADAR vectors to final approach course.

LANDING RUNWAY 23: From SLPOH on track 201° to cross NODEW between 8000 and 9000 and at 230K, then on track 201° to cross BLNCO at or above 7000, then on track 236° to cross JEPHS at or above 6000. Expect ILS or LOC Rwy 23 approach.