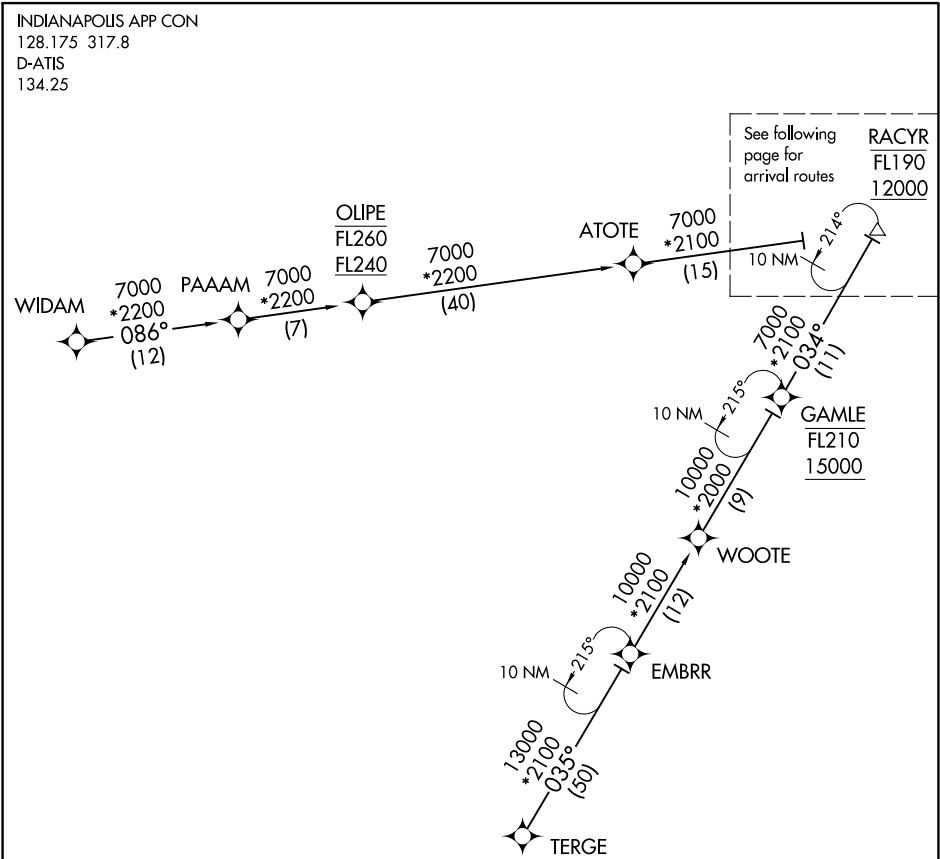


(RACYR.SMUKE2) 17173
SMUKE TWO ARRIVAL (RNAV) Transition Routes

INDIANAPOLIS INTL (IND)
INDIANAPOLIS, INDIANA



- NOTE: RADAR required.
NOTE: RNAV 1.
NOTE: DME/DME/IRU or GPS required.
NOTE: Expect descend via clearance and landing direction assignment by Indianapolis Center. Approach will assign landing Rwy.
NOTE: For non-GPS equipped aircraft landing Rwy 23L; SHB DME must be operational.
NOTE: For non-GPS equipped aircraft landing Rwy 23R; SHB and VHP DMEs must be operational.

(CONTINUED ON FOLLOWING PAGE)

EMBRR TRANSITION (EMBRR.SMUKE2):
TERGE TRANSITION (TERGE.SMUKE2):
WIDAM TRANSITION (WIDAM.SMUKE2):

NOTE: Chart not to scale.

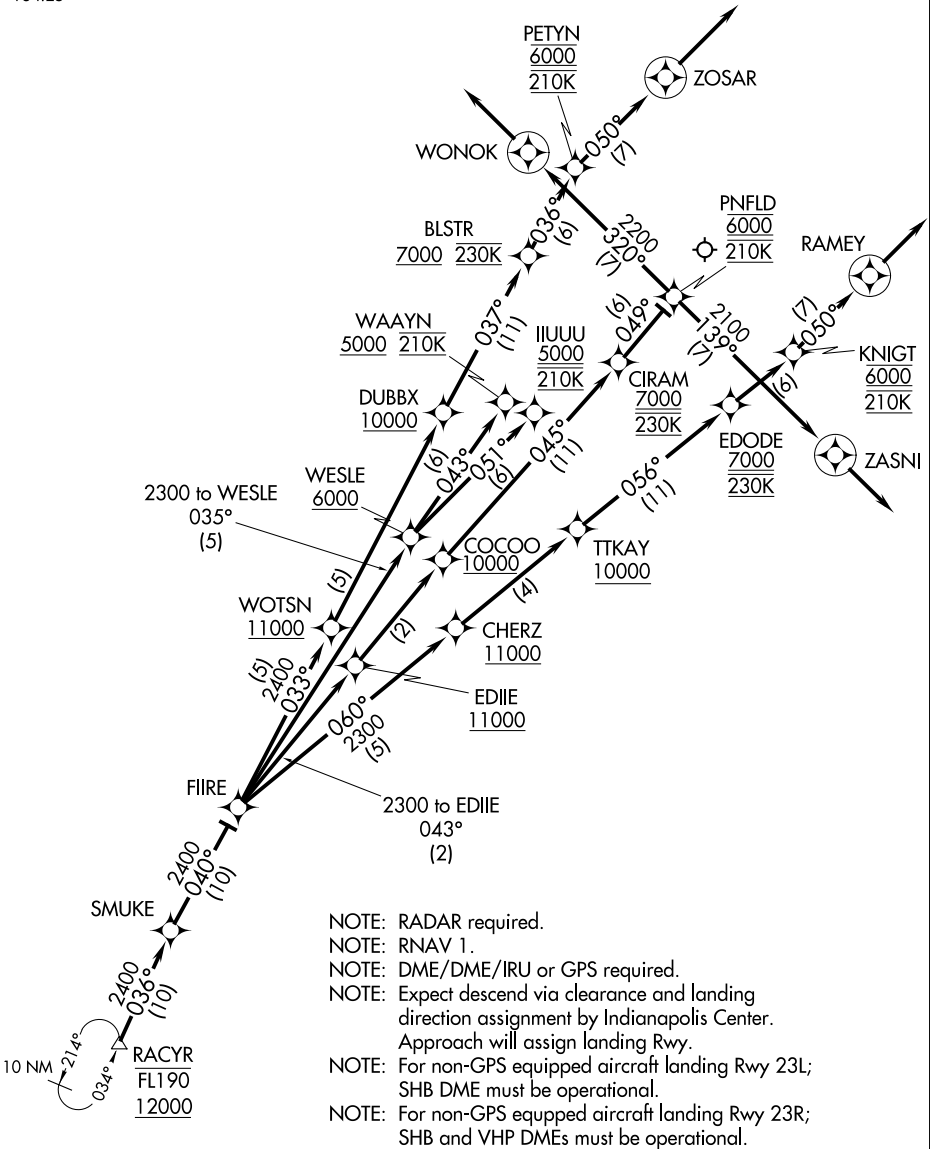
SMUKE TWO ARRIVAL (RNAV) Transition Routes
(RACYR.SMUKE2) 10NOV16

INDIANAPOLIS, INDIANA
INDIANAPOLIS INTL (IND)

EC-2, 18 APR 2024 to 16 MAY 2024

EC-2, 18 APR 2024 to 16 MAY 2024

INDIANAPOLIS APP CON
128.175 317.8
D-ATIS
134.25



(NARRATIVE ON FOLLOWING PAGE)

NOTE: Chart not to scale.

ARRIVAL ROUTE DESCRIPTION

From RACYR on track 036° to SMUKE, then on track 040° to FIIRE.

LANDING RWY 5L: From FIIRE on track 035° to cross WESLE at or above 6000, then on track 043° to cross WAAYN at or above 5000 and at 210K. Expect RNAV (RNP), RNAV (GPS) or ILS or LOC RWY 5L or radar vectors to final approach course.

LANDING RWY 5R: From FIIRE on track 035° to cross WESLE at or above 6000, then on track 051° to cross IUUUU at or above 5000 and at 210K. Expect RNAV (RNP), RNAV (GPS) or ILS or LOC RWY 5R or radar vectors to final approach course.

LANDING RWY 14: From FIIRE on track 043° to cross EDIIE at or above 11000, then on track 043° to cross COCOO at or above 10000, then on track 045° to cross CIRAM at or above 7000 and at 230K, then on track 049° to cross PNFLD at 6000 and at 210K, then on track 320° to WONOK, then on track 320°. Expect radar vectors to final approach course.

LANDING RWY 23L: From FIIRE on track 060° to cross CHERZ at or above 11000, then on track 060° to cross TTKAY at or above 10000, then on track 056° to cross EDODE at or above 7000 and at 230K, then on track 056° to cross KNIGT at 6000 and at 210K, then on track 050° to RAMEY, then on track 050°. Expect radar vectors to final approach course.

LANDING RWY 23R: From FIIRE on track 033° to cross WOTSN at or above 11000, then on track 033° to cross DUBBX at or above 10000, then on track 037° to cross BLSTR at or above 7000 and at 230K, then on track 036° to cross PETYN at 6000 and at 210K, then on track 050° to ZOSAR, then on track 050°. Expect radar vectors to final approach course.

LANDING RWY 32: From FIIRE on track 043° to cross EDIIE at or above 11000, then on track 043° to cross COCOO at or above 10000, then on track 045° to cross CIRAM at or above 7000 and at 230K, then on track 049° to cross PNFLD at 6000 and at 210K, then on track 139° to ZASNI, then on track 139°. Expect radar vectors to final approach course.

LOST COMMUNICATIONS: In the event of lost communication prior to runway assignment, execute ILS or LOC Rwy 23R approach.