

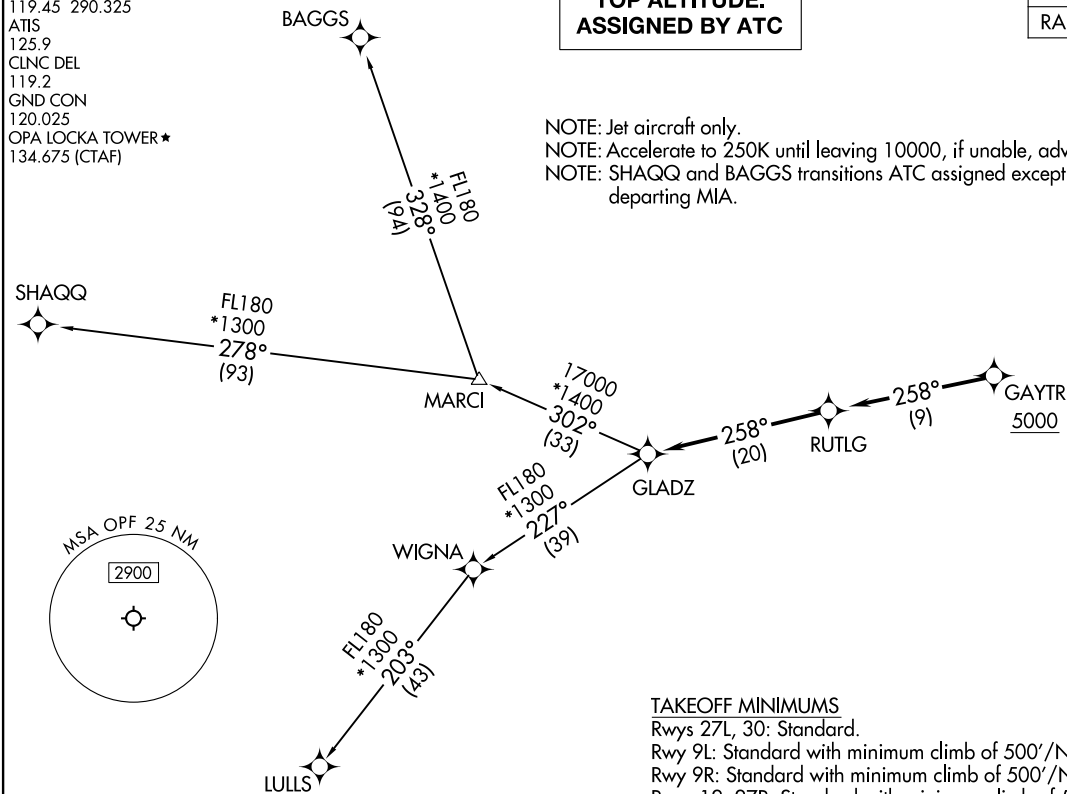
GLADZ THREE DEPARTURE (RNAV)
(GLADZ3.GLADZ) 21 MAR 24

MIAMI DEP CON
119.45 290.325
ATIS
125.9
CLINC DEL
119.2
GND CON
120.025
OPA LOCKA TOWER ★
134.675 (CTAF)

TOP ALTITUDE: ASSIGNED BY ATC

RNAV-1 DME/DME/IRU or GPS.
RADAR required.

NOTE: Jet aircraft only.
NOTE: Accelerate to 250K until leaving 10000, if unable, advise ATC.
NOTE: SHAQQ and BAGGS transitions ATC assigned except aircraft departing MIA.



TAKEOFF MINIMUMS

Rwys 27L, 30: Standard.
Rwy 9L: Standard with minimum climb of 500'/NM to 1000.
Rwy 9R: Standard with minimum climb of 500'/NM to 700.
Rwys 12, 27R: Standard with minimum climb of 500'/NM to 600.

NOTE: Chart not to scale.

(CONTINUED ON FOLLOWING PAGE)

(GLADZ3.GLADZ) 24081
GLADZ THREE DEPARTURE (RNAV)

AL-256 (FAA)

MIAMI-OPA LOCKA EXEC (OPF)
MIAMI, FLORIDA

DEPARTURE ROUTE DESCRIPTION	
<div><div>TAKEOFF RUNWAYS 9L/R: Climb on heading 093° or as assigned by ATC for RADAR vectors to cross GAYTR at or above 5000, thence. . . .</div><div>TAKEOFF RUNWAY 12: Climb on heading 128° or as assigned by ATC for RADAR vectors to cross GAYTR at or above 5000, thence. . . .</div><div>TAKEOFF RUNWAYS 27L/R: Climb on heading 273° or as assigned by ATC for RADAR vectors to cross GAYTR at or above 5000, thence. . . .</div><div>TAKEOFF RUNWAY 30: Climb on heading 308° or as assigned by ATC for RADAR vectors to cross GAYTR at or above 5000, thence. . . .</div><div>. . .on track 258° to RUTLG, then on track 258° to GLADZ, then on transition. Maintain ATC assigned altitude, expect clearance to filed altitude 10 minutes after departure.</div><div>BAGGS TRANSITION (GLADZ3.BAGGS)</div><div>LULLS TRANSITION (GLADZ3.LULLS)</div><div>SHAQQ TRANSITION (GLADZ3.SHAQQ)</div></div>	

SE-3, 18 APR 2024 to 16 MAY 2024

SE-3, 18 APR 2024 to 16 MAY 2024