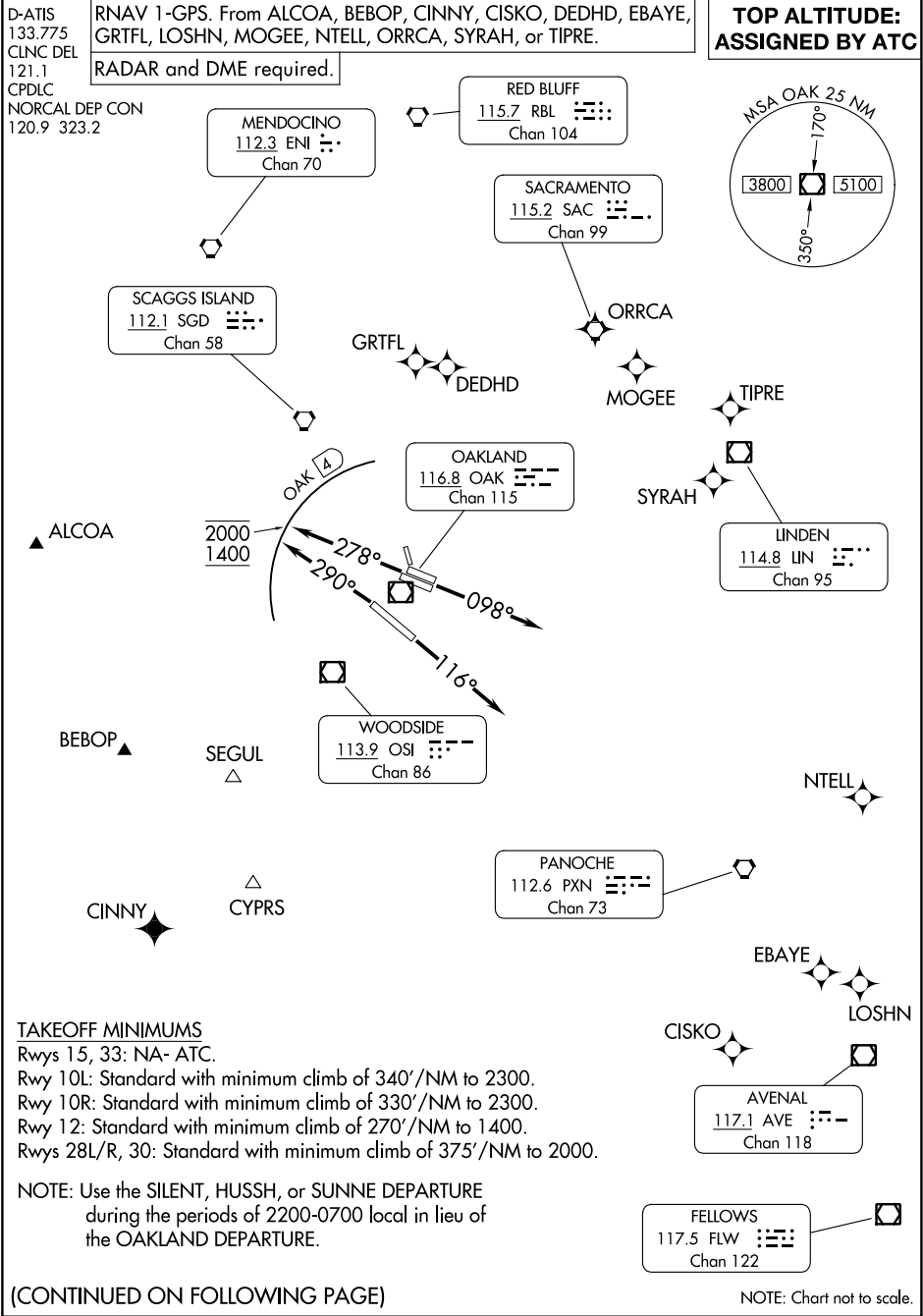


(OAK6.OAK) 24025

OAKLAND SIX DEPARTURE

AL-294 (FAA)

METRO OAKLAND INTL (OAK)  
OAKLAND, CALIFORNIA



SW-2, 18 APR 2024 to 16 MAY 2024

SW-2, 18 APR 2024 to 16 MAY 2024

OAKLAND SIX DEPARTURE

(OAK6.OAK) 25JAN24

OAKLAND, CALIFORNIA  
METRO OAKLAND INTL (OAK)

DEPARTURE ROUTE DESCRIPTION	
TAKEOFF RUNWAYS 10L/R:	Climb on heading 098° for RADAR vectors to assigned route/fix, thence. . . .
TAKEOFF RUNWAY 12:	Climb on heading 116° for RADAR vectors to assigned route/fix, thence. . . .
TAKEOFF RUNWAYS 28L/R:	Climb on heading 278° for RADAR vectors to assigned route/fix. Cross 4 DME northwest of OAK VOR/DME at or above 1400 and at or below 2000, thence. . . .
TAKEOFF RUNWAY 30:	Climb on heading 290° for RADAR vectors to assigned route/fix. Cross 4 DME northwest of OAK VOR/DME at or above 1400 and at or below 2000, thence. . . .
. . . .maintain ATC assigned altitude. Expect filed altitude ten minutes after departure.	
LOST COMMUNICATIONS: If not in contact with departure control after reaching 5000', continue climb to assigned altitude and proceed direct to assigned route/fix.	

SW-2, 18 APR 2024 to 16 MAY 2024

SW-2, 18 APR 2024 to 16 MAY 2024