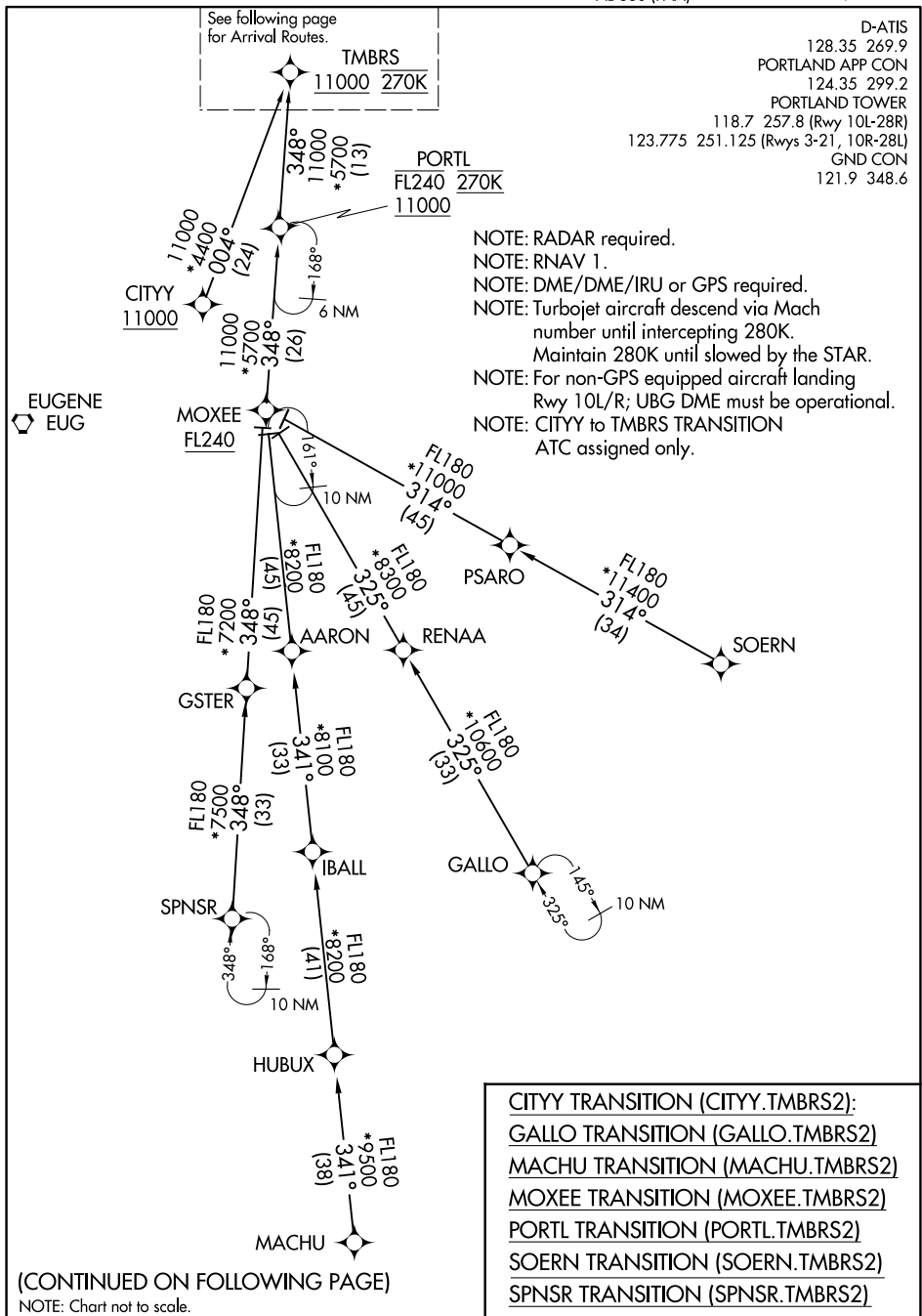


TMBRS TWO ARRIVAL (RNAV) Transition Routes

AL-330 (FAA)

PORTLAND INTL (PDX)

PORTLAND, OREGON



TMBRS TWO ARRIVAL (RNAV) Transition Routes

(TMBRS.TMBRS2) 25JUN15

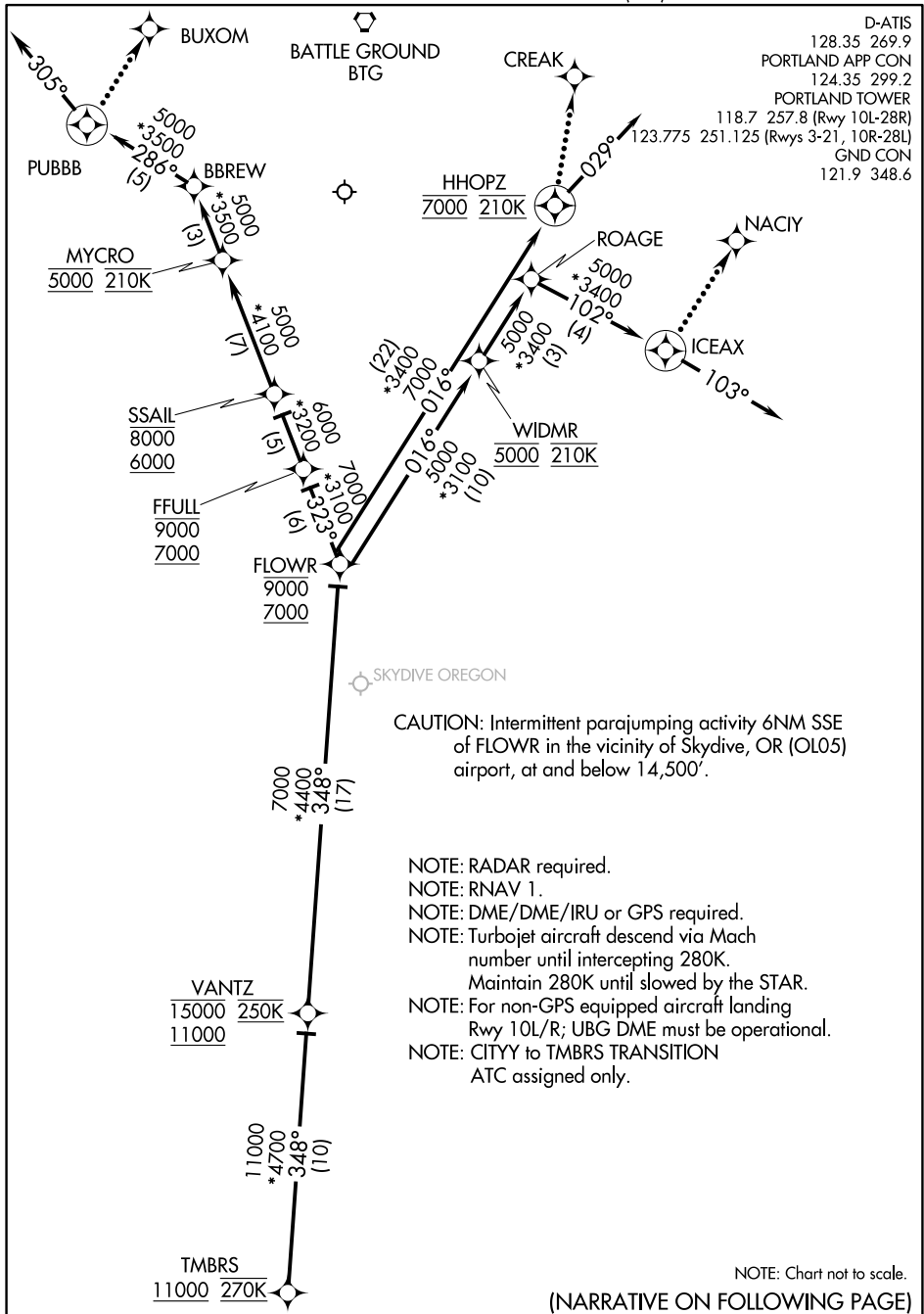
PORTLAND, OREGON
PORTLAND INTL (PDX)

NW-1, 18 APR 2024 to 16 MAY 2024

TMBRS TWO ARRIVAL (RNAV) Arrival Routes

PORTLAND, OREGON

AL-330 (FAA)



TMBRS TWO ARRIVAL (RNAV) Arrival Routes

(TMBRS.TMBRS2) 25JUN15

PORTLAND, OREGON
PORTLAND INTL (PDX)

NW-1, 18 APR 2024 to 16 MAY 2024

ARRIVAL ROUTE DESCRIPTION

From TMBRS on track 348° to cross VANTZ between 11000 and 15000 and at 250K, then on track 348° to cross FLOWR between 7000 and 9000. Thence . . .

LANDING RUNWAYS 10L/R: From FLOWR on track 323° to cross FFULL between 7000 and 9000, then on track 323° to cross SSAIL between 6000 and 8000, then on track 323° to cross MYCRO at 5000 and at 210K, then on track 323° to BBREW, then on track 286° to PUBBB, then on track 305°. Expect RADAR vectors to final approach course.

LANDING RUNWAY 21: From FLOWR on track 016° to cross HHOPZ at 7000 and at 210K, then on track 029°. Expect RADAR vectors to final approach course.

LANDING RUNWAYS 28L/R: From FLOWR on track 016° to cross WIDMR at 5000 and at 210K, then on track 016° to ROAGE, then on track 102° to cross ICEAX, then on track 103°. Expect RADAR vectors to final approach course.

LOST COMMUNICATIONS:

LANDING RUNWAY 10: At PUBBB, turn right direct to BUXOM and execute ILS RWY 10L approach.

LANDING RUNWAY 21: At HHOPZ turn left direct to CREAK and execute LOC/DME RWY 21 approach.

LANDING RUNWAY 28: At ICEAX, turn left direct to NACIY and execute ILS RWY 28R approach.