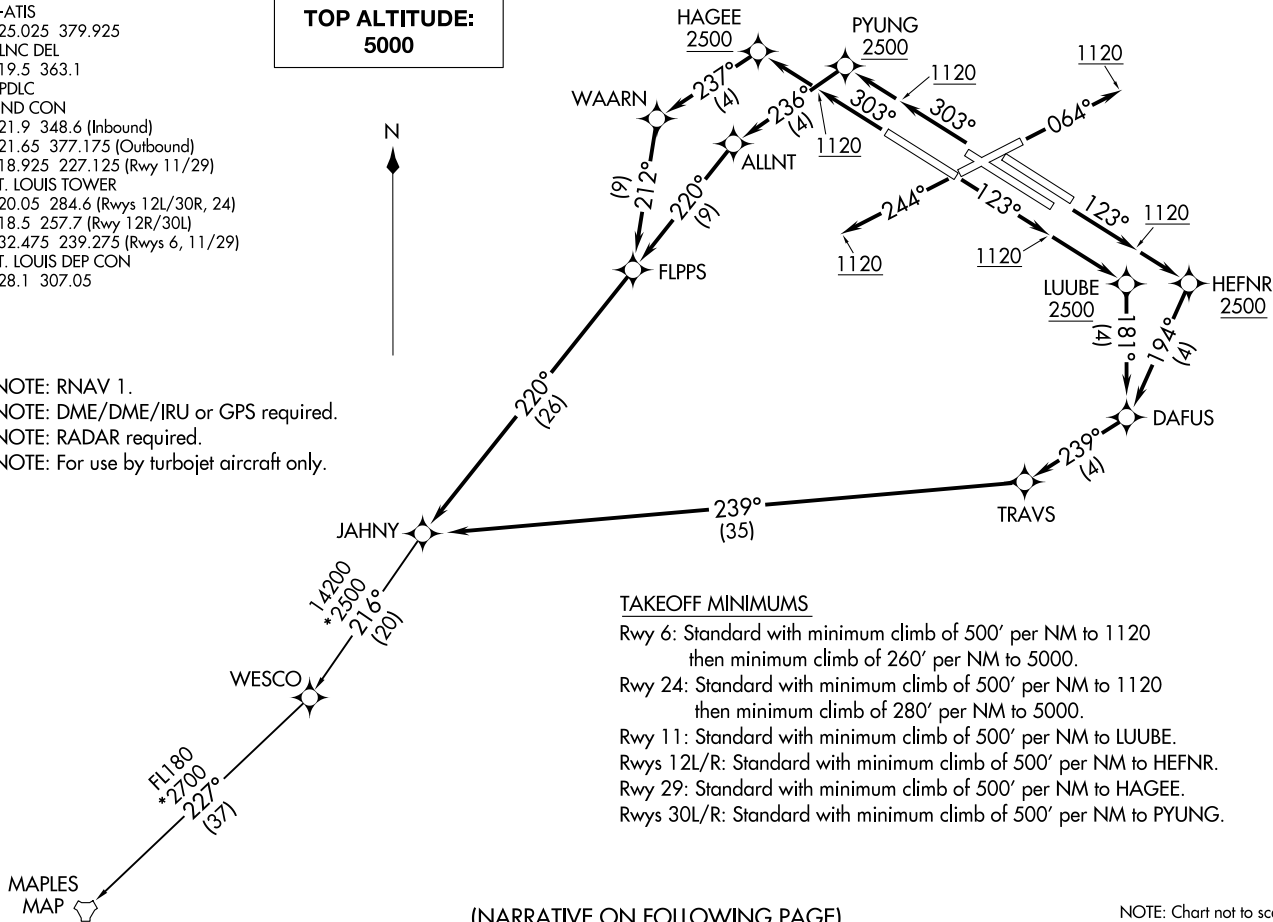


ST. LOUIS, MISSOURI
ST LOUIS LAMBERT INTL (STL)

NOTE: RNAV 1.
NOTE: DME/DME/IRU or GPS required.
NOTE: RADAR required.
NOTE: For use by turbojet aircraft only.

N



NOTE: Chart not to scale.

ST LOUIS LAMBERT INTL (STL)
ST. LOUIS, MISSOURI



DEPARTURE ROUTE DESCRIPTION

TAKEOFF RUNWAY 6: Climb on heading 064° to 1120, then as assigned by ATC, expect RADAR vectors to JAHNY. Thence. . . .

TAKEOFF RUNWAY 24: Climb on heading 244° to 1120, then as assigned by ATC, expect RADAR vectors to JAHNY. Thence. . . .

TAKEOFF RUNWAY 11: Climb on heading 123° to 1120, then direct LUUBE, cross LUUBE at or above 2500, then on depicted route to JAHNY. Thence. . . .

TAKEOFF RUNWAYS 12L/R: Climb on heading 123° to 1120, then direct HEFNR, cross HEFNR at or above 2500, then on depicted route to JAHNY. Thence. . . .

TAKEOFF RUNWAY 29: Climb on heading 303° to 1120, then direct HAGEE, cross HAGEE at or above 2500, then on depicted route to JAHNY. Thence. . . .

TAKEOFF RUNWAYS 30L/R: Climb on heading 303° to 1120, then direct PYUNG, cross PYUNG at or above 2500, then on depicted route to JAHNY. Thence. . . .

. . . . Maintain 5000, expect filed altitude 10 minutes after departure.

MAPLES TRANSITION (JAHNY6.MAP)