

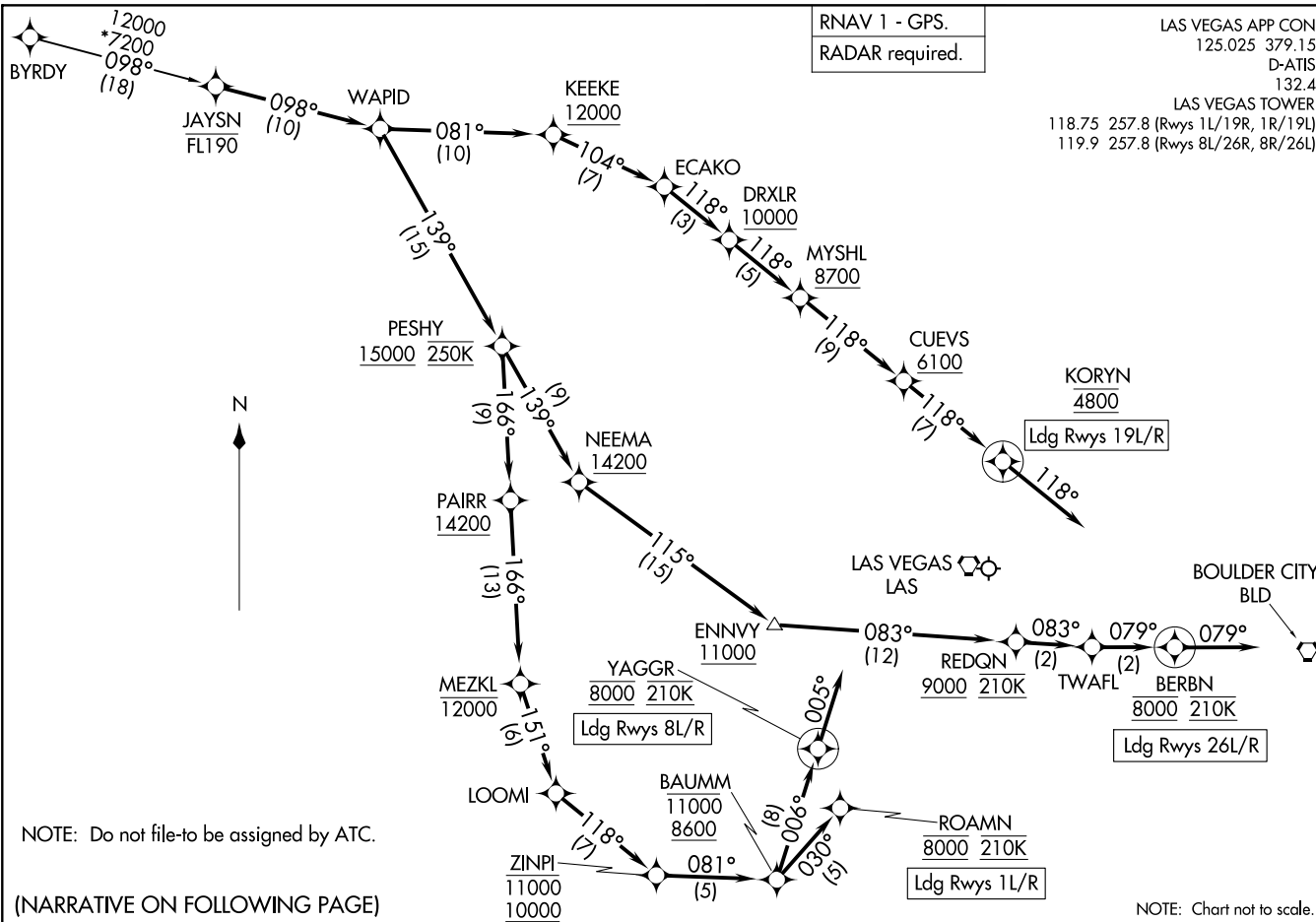
(JAYSN.JAYSN2) 22139  
JAYSN TWO ARRIVAL (RNAV)

AL-662 (FAA)

HARRY REID INTL (LAS)  
LAS VEGAS, NEVADA

LAS VEGAS APP CON  
125.025 379.15  
D-ATIS  
132.4  
LAS VEGAS TOWER  
118.75 257.8 (Rwys 1L/19R, 1R/19L)  
119.9 257.8 (Rwys 8L/26R, 8R/26L)

RNAV 1 - GPS.  
RADAR required.



SW-4, 18 APR 2024 to 16 MAY 2024

JAYSN TWO ARRIVAL (RNAV)  
(JAYSN.JAYSN2) 19MAY22

LAS VEGAS, NEVADA  
HARRY REID INTL (LAS)

ARRIVAL ROUTE DESCRIPTION

BYRDY TRANSITION (BYRDY.JAYSN2)

From JAYSN on track 098° to WAPID.

LANDING RUNWAYS 1L/R: From WAPID on track 139° to cross PESHY at or above 15000 and at 250K, then on track 166° to cross PAIRR at or above 14200, then on track 166° to cross MEZKL at or below 12000, then on track 151° to LOOMI, then on track 118° to cross ZINPI between 10000 and 11000, then on track 081° to cross BAUMM between 8600 and 11000, then on track 036° to cross ROAMN at 8000 and at 210K. Expect RADAR vectors to final approach course.

LANDING RUNWAYS 8L/R: From WAPID on track 139° to cross PESHY at or above 15000 and at 250K, then on track 166° to cross PAIRR at or above 14200, then on track 166° to cross MEZKL at or below 12000, then on track 151° to LOOMI, then on track 118° to cross ZINPI between 10000 and 11000, then on track 081° to cross BAUMM between 8600 and 11000, then on track 006° to cross YAGGR at 8000 and at 210K, then on track 005° . Expect RADAR vectors to final approach course.

LANDING RUNWAYS 19L/R: From WAPID on track 081° to cross KEEKE at or above 12000, then on track 104° to ECAKO, then on track 118° to cross DRXLR at or above 10000, then on track 118° to cross MYSHL at or above 8700, then on track 118° to cross CUEVS at or above 6100, then on track 118° to cross KORYN at 4800, then on track 118°. Expect RADAR vectors to final approach course.

LANDING RUNWAYS 26L/R: From WAPID on track 139° to cross PESHY at or above 15000 and at 250K, then on track 139° to cross NEEMA at or above 14200, then on track 115° to cross ENNVY at or above 11000, then on track 083° to cross REDQN at or above 9000 and at 210K, then on track 083° to TWAFL, then on track 079° to cross BERBN at 8000 and at 210K, then on track 079°. Expect RADAR vectors to final approach course.

LOST COMMUNICATIONS

LANDING RUNWAY 8R: At YAGGR execute RNAV (RNP) RWY 8R approach, if unable, proceed visually to intercept the final approach course; if unable, maintain 8000 proceed to LAS VORTAC then maintain 7000 proceed to BLD VORTAC and execute ILS or LOC RWY 26L approach.