

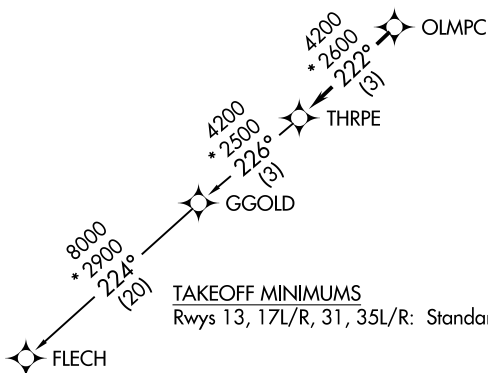
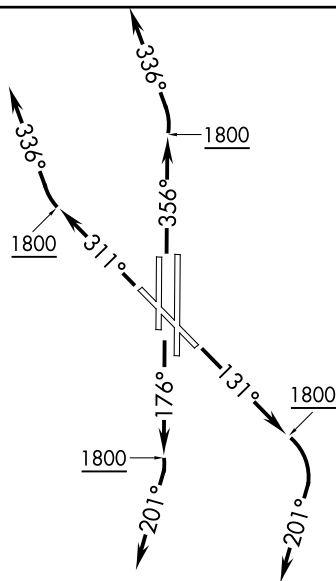
AL-739 (FAA)

THRPE THREE DEPARTURE (RNAV)

WILEY POST (PWA)
OKLAHOMA CITY, OKLAHOMA

ATIS
128.725
GND CON
121.7
WILEY POST TOWER ★
126.9 306.9
OKE CITY DEP CON
124.6 266.8

**TOP ALTITUDE:
ASSIGNED BY ATC**



NOTE: RADAR required.
NOTE: DME/DME/IRU or GPS required.
NOTE: RNAV 1.

TAKEOFF MINIMUMS

Rwys 13, 17L/R, 31, 35L/R: Standard with minimum climb of 500' per NM to 2100.

NOTE: Chart not to scale.



DEPARTURE ROUTE DESCRIPTION

TAKEOFF RWY 13: Climb heading 131° to 1800, then right turn heading 201° or as assigned by ATC, expect RADAR vectors to OLMPC, thence

TAKEOFF RWYS 17L/R: Climb heading 176° to 1800, then right turn heading 201° or as assigned by ATC, expect RADAR vectors to OLMPC, thence

TAKEOFF RWY 31: Climb heading 311° to 1800, then right turn heading 336° or as assigned by ATC, expect RADAR vectors to OLMPC, thence . . .

TAKEOFF RWYS 35L/R: Climb heading 356° to 1800, then left turn heading 336° or as assigned by ATC, expect RADAR vectors to OLMPC, thence . . .

... on track 222° to THRPE, then on (transition). Maintain 3000 or as assigned by ATC. Expect filed altitude 10 minutes after departure.

FLECH TRANSITION (THRPE3.FLECH)

GGOLD TRANSITION (THRPE3.GGOLD)

THRPE THREE DEPARTURE (RNAV)

(THRPE3.THRPE) 07DEC17

OKLAHOMA CITY, OKLAHOMA
WILEY POST (PWA)

SC-1, 18 APR 2024 to 16 MAY 2024