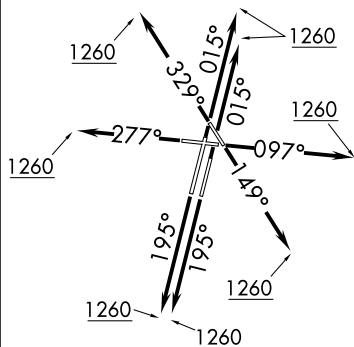


## ADELL SIX DEPARTURE (RNAV)

CHICAGO/WEST CHICAGO, ILLINOIS



**TOP ALTITUDE:**  
**3000**

ATIS	
132.075	
GND CON	
121.8	
AGE TOWER	
20.9 257.8	
O DEP CON	
33.5 349.0	

TAKEOFF MINIMUMS:

Rwys 2L/R, 10, 20L/R, 28, 33: Standard.

Rwy 15: 300-1 or standard with minimum climb of 205' per NM to 1000.

NOTE: RADAR required.

NOTE: DME/DME/IRU or GPS required.

NOTE: RNAV 1.

NOTE: Turbojet departures maintain 250K until advised by ATC.

NOTE: AKMIE Transition: For aircraft inbound to BMI, SPI, PIA, or as assigned by ATC.

## DEPARTURE ROUTE DESCRIPTION

TAKEOFF RUNWAYS 2L/2R: Climb heading 015° to 1260, then as assigned by ATC, for vectors to ACITO. Thence . . .

TAKEOFF RUNWAY 10: Climb heading 097° to 1260, then as assigned by ATC, for vectors to ACITO. Thence . . .

TAKEOFF RUNWAY 15: Climb heading 149° to 1260, then as assigned by ATC, for vectors to ACITO. Thence . . .

TAKEOFF RUNWAYS 20L/20R: Climb heading 195° to 1260, then as assigned by ATC, for vectors to ACITO. Thence . . .

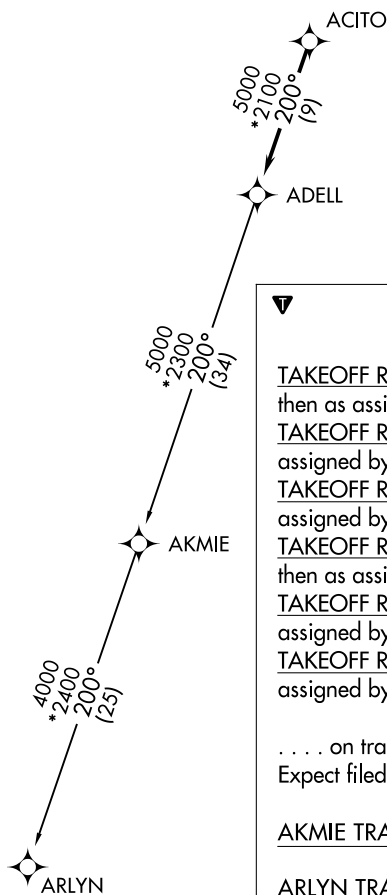
**TAKEOFF RUNWAY 28:** Climb heading 277° to 1260, then as assigned by ATC, for vectors to ACITO. Thence . . .

TAKEOFF RUNWAY 33: Climb heading 329° to 1260, then as assigned by ATC, for vectors to ACITO. Thence . . . .

... on track 200° to ADELL, then on (transition). Maintain 3000.  
Expect filed altitude 10 minutes after departure.

AKMIE TRANSITION (ADELL6.AKMIE):

ARLYN TRANSITION (ADELL6.ARLYN):



NOTE: Chart not to scale.

## ADELL SIX DEPARTURE (RNAV)

(ADELL6.ADELL) 10OCT19

CHICAGO/WEST CHICAGO, ILLINOIS

DUPAGE (DPA)