

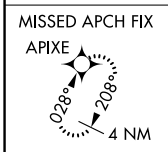
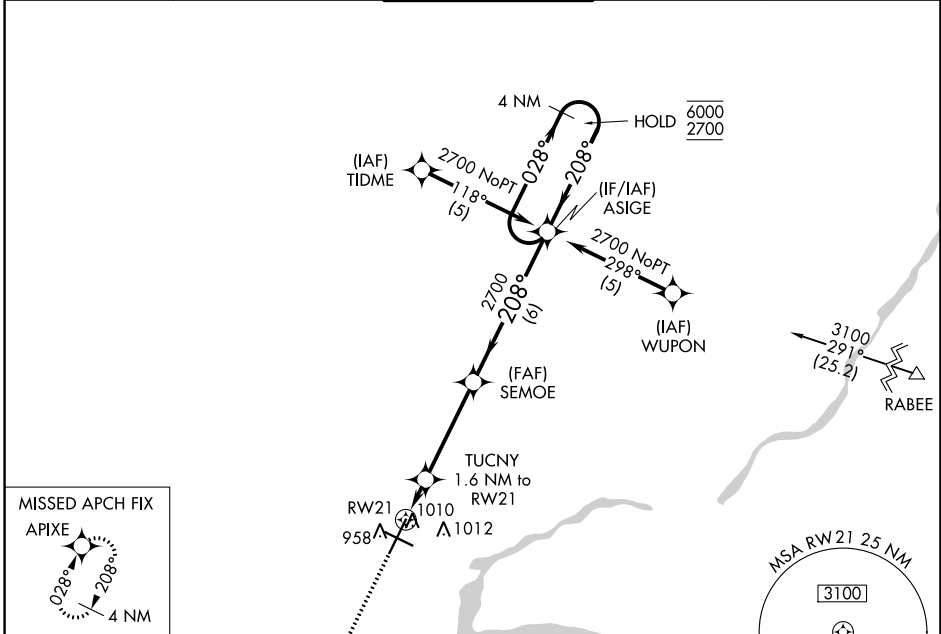
WAAS CH 93517 W21A	APP CRS 208°	Rwy Idg TDZE Apt Elev	8002 879 918
--	------------------------	-----------------------------	---

RNAV (GPS) RWY 21

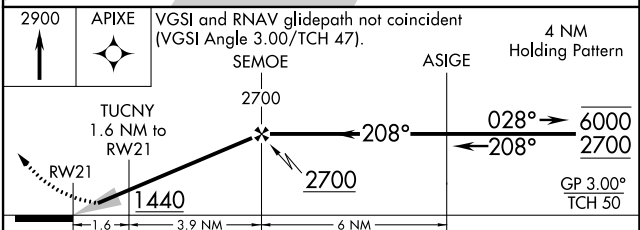
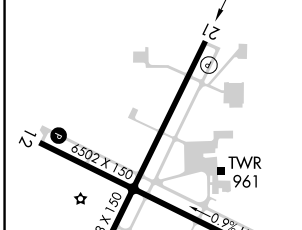
APPLETON INTL (ATW)

RNP APCH - GPS.		MISSED APPROACH: Climb to 2900 direct APIXE and hold.		
<p>▼ For uncompensated Baro-VNAV systems, ▲ LNAV/VNAV NA below -16°C or above 47°C.</p>				

ATIS 127.15	GREEN BAY APP CON* 126.3 338.2	APPLETON TOWER* 119.6 (CTAF) 0	GND CON 121.7	UNICOM 122.95
-----------------------	--	--	-------------------------	-------------------------



ELEV 918	D	TDZE 879
----------	----------	----------



CATEGORY	A	B	C	D
LPV DA		1129-3/4	250 (300-3/4)	
LNAV/VNAV DA		1261-1 1/8	382 (400-1 1/8)	
LNAV MDA	1280-1	401 (400-1)	1280-1 1/8	401 (400-1 1/8)
C CIRCLING	1340-1 422 (500-1)	1380-1 462 (500-1)	1400-1 1/2 482 (500-1 1/2)	1480-2 562 (600-2)

EC-3, 18 APR 2024 to 16 MAY 2024

EC-3, 18 APR 2024 to 16 MAY 2024