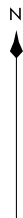


ATIS 121.45
CLNC DEL 118.275
121.8 (when tower closed)
GND CON 121.8
DOWNTOWN TOWER★
119.925 379.3
ST LOUIS DEP CON
123.7 371.875



HALLSVILLE
114.2 HLV
Chan 89

R-095

V4

8000
*2500
281°
(46)

CABIT

8000
*2100
281°
(32)

V4

ST. LOUIS
117.4 STL
Chan 121

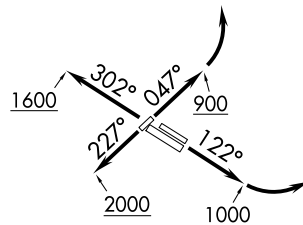
NOTE: DME and RADAR required.

TAKEOFF MINIMUMS

Rwys 12L/R, 23, 30R: Standard.

Rwy 5: 200-1¼ or standard with minimum climb of 343'
per NM to 700.

Rwy 30L: 400-2½ or standard with minimum climb of
220' per NM to 900, or alternatively, with standard takeoff
minimums and a normal 200' per NM climb gradient,
takeoff must occur no later than 2100' prior to DER.



(CONTINUED ON FOLLOWING PAGE)

NOTE: Chart not to scale.



DEPARTURE ROUTE DESCRIPTION

TAKEOFF RUNWAY 5: Climb on heading 047° to 900 before turning left, then climb and maintain 2500 or assigned altitude. Expect vector to appropriate route, thence

TAKEOFF RUNWAYS 12L/R: Climb on heading 122° to 1000 before turning left, then climb and maintain 2500 or assigned altitude. Expect vector to appropriate route, thence

TAKEOFF RUNWAY 23: Climb on heading 227° to 2000 before turning, then climb and maintain 2500 or assigned altitude. Expect vector to appropriate route, thence

TAKEOFF RUNWAYS 30L/R: Climb on heading 302° to 1600 before turning, then climb and maintain 2500 or assigned altitude. Expect vector to appropriate route, thence

. . . . (transition). Expect filed altitude 10 minutes after departure.

HALLSVILLE TRANSITION (OZARK8.HLV): From over STL VORTAC on STL R-281 to CABIT, then on STL R-281 and HLV R-095 to HLV VORTAC.

EC-3, 18 APR 2024 to 16 MAY 2024

EC-3, 18 APR 2024 to 16 MAY 2024