

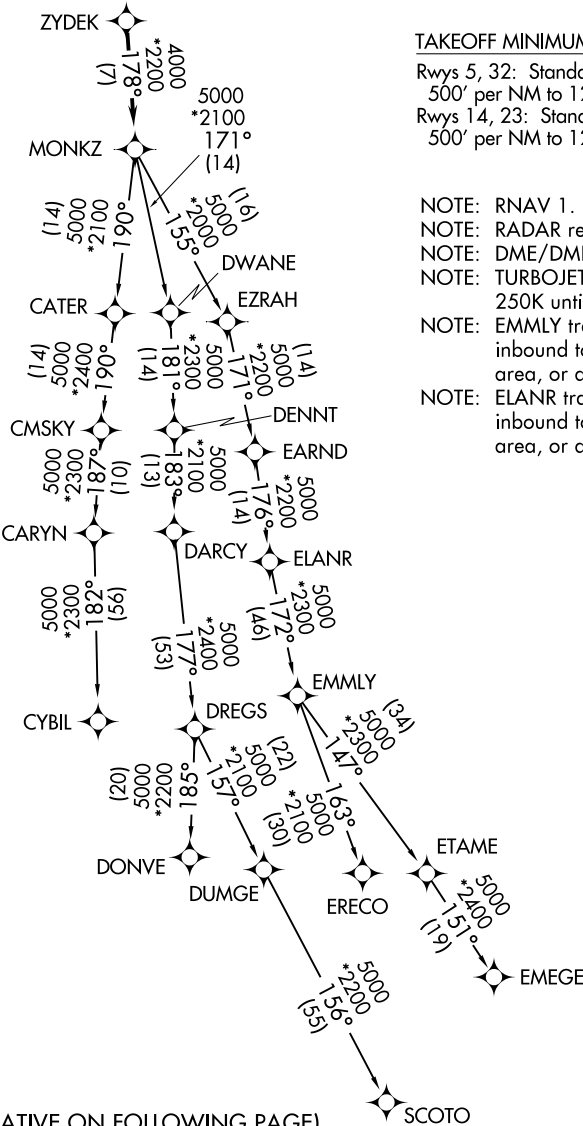
TOP ALTITUDE:  
3000

ATIS  
132.4  
GND CON  
121.65  
WAUKEGAN TOWER★  
120.05 273.55  
DEP CON  
120.55

TAKEOFF MINIMUMS

Rwys 5, 32: Standard with minimum climb of 500' per NM to 1240.  
Rwys 14, 23: Standard with minimum climb of 500' per NM to 1230.

- NOTE: RNAV 1.  
NOTE: RADAR required.  
NOTE: DME/DME/IRU or GPS required.  
NOTE: TURBOJET departures maintain 250K until advised by ATC.  
NOTE: EMMLY transition: For aircraft inbound to Indianapolis Terminal area, or as assigned by ATC.  
NOTE: ELANR transition: For aircraft inbound to Cincinnati Terminal area, or as assigned by ATC.



(NARRATIVE ON FOLLOWING PAGE)

NOTE: Chart not to scale.



DEPARTURE ROUTE DESCRIPTION

TAKEOFF RWY 5: Climb heading 051° or as assigned by ATC to at or above 1240, expect vectors to ZYDEK. Thence. . . .

TAKEOFF RWY 14: Climb heading 147° or as assigned by ATC to at or above 1230, expect vectors to ZYDEK. Thence. . . .

TAKEOFF RWY 23: Climb heading 231° or as assigned by ATC to at or above 1230, expect vectors to ZYDEK. Thence. . . .

TAKEOFF RWY 32: Climb heading 327° or as assigned by ATC to at or above 1240, expect vectors to ZYDEK. Thence. . . .

. . . .on track 178° to MONKZ, then on (transition), maintain 3000, expect filed altitude ten minutes after departure.

- CYBIL TRANSITION (MONKZ5.CYBIL)
- DONVE TRANSITION (MONKZ5.DONVE)
- ELANR TRANSITION (MONKZ5.ELANR)
- EMEGE TRANSITION (MONKZ5.EMEGE)
- EMMLY TRANSITION (MONKZ5.EMMLY)
- ERECO TRANSITION (MONKZ5.ERECO)
- SCOTO TRANSITION (MONKZ5.SCOTO)

EC-3, 18 APR 2024 to 16 MAY 2024

EC-3, 18 APR 2024 to 16 MAY 2024