

APP CRS	Rwy Idg	5900
260°	TDZE	46
	Apt Elev	49

RNAV (GPS) RWY 26

WILEY POST-WILL ROGERS MEML (BRW)(PABR)

RNP APCH-GPS.

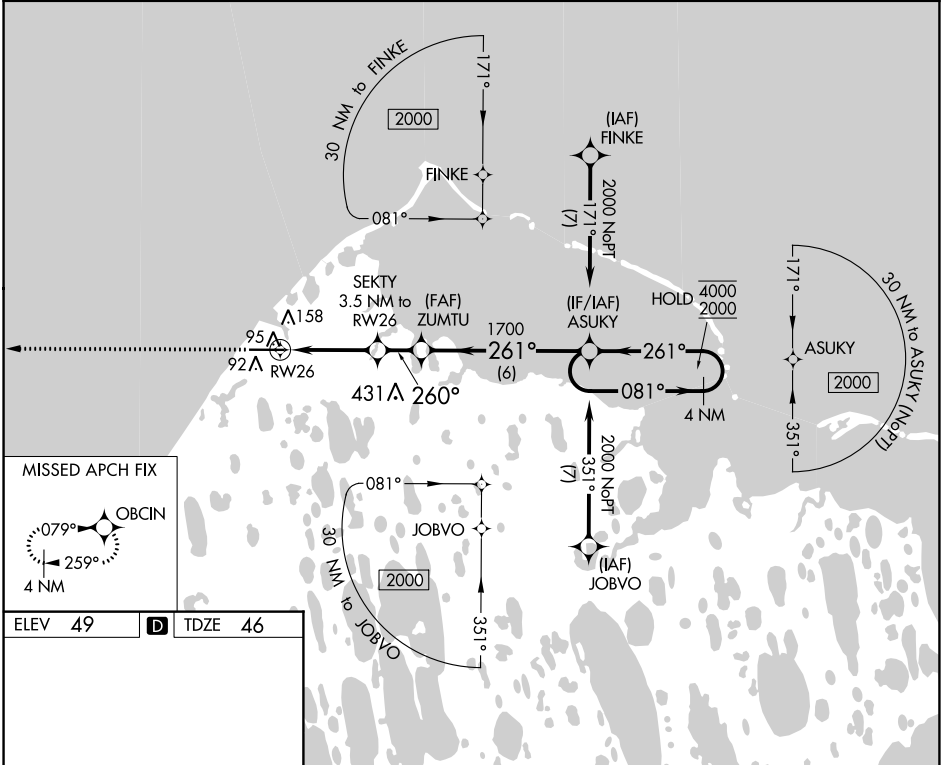
∇
▲ Circling NA for Cat A north of Rwy 8-26

MISSED APPROACH: Climb to 2000 direct OBCIN and hold.

AFIS
132.15

ANCHORAGE CENTER
135.3 239.25

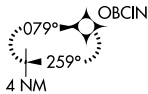
BARROW RADIO
123.6 (CTAF)



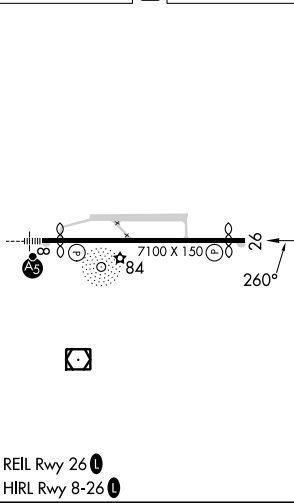
AK, 21 MAR 2024 to 16 MAY 2024

AK, 21 MAR 2024 to 16 MAY 2024

MISSED APCH FIX



ELEV **49** **D** TDZE **46**



2000	OBCIN	SEKTY 3.5 NM to RW26	ZUMTU	ASUKY	4 NM Holding Pattern
		0.9 NM to RW26	≤3.00° TCH 50	1700	081° → 4000 ← 261° 2000
		0.9	2.6 NM	1.6 NM	6 NM
CATEGORY	A	B	C	D	
LNAV MDA	360-1 314 (400-1)				
C CIRCLING	420-1 371 (400-1)	500-1 451 (500-1)	500-1½ 451 (500-1½)	680-2 631 (700-2)	

REIL Rwy 26 **Ⓛ**
HIRL Rwy 8-26 **Ⓛ**