

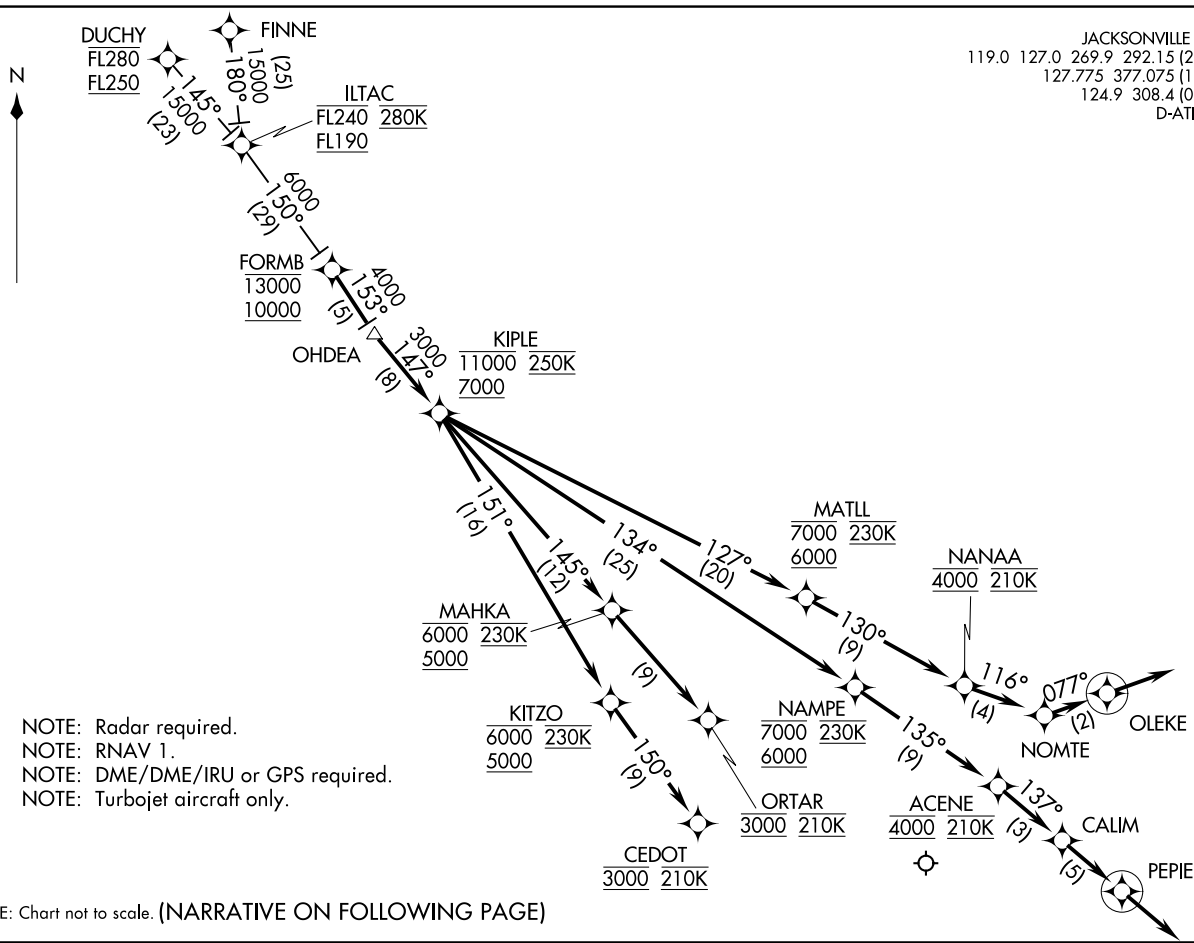
(OHDEA.OHDEA1) 18088

OHDEA ONE ARRIVAL (RNAV)

AL-5570 (FAA)

JACKSONVILLE INTL (JAX)  
JACKSONVILLE, FLORIDA

JACKSONVILLE APP CON  
119.0 127.0 269.9 292.15 (270°-090°)  
127.775 377.075 (181°-269°)  
124.9 308.4 (091°-180°)  
D-ATIS 125.85



SE-3, 18 APR 2024 to 16 MAY 2024

OHDEA ONE ARRIVAL (RNAV)  
(OHDEA.OHDEA1) 170CT13

JACKSONVILLE, FLORIDA  
JACKSONVILLE INTL (JAX)

ARRIVAL ROUTE DESCRIPTION

DUCHY TRANSITION (DUCHY.OHDEA1)  
FINNE TRANSITION (FINNE.OHDEA1)

From FORMB on track 153° to OHDEA, then on track 147° to cross KIPLE between 7000 and 11000 and at 250K.

LANDING RWY 8: From KIPLE on track 151° to cross KITZO between 5000 and 6000 and at 230K, then on track 150° to cross CEDOT at 3000 and at 210K. Expect radar vectors to RNAV (RNP)/Visual approach as assigned by ATC.

LANDING RWY 14: From KIPLE on track 145° to cross MAHKA between 5000 and 6000 and at 230K, then on track 145° to cross ORTAR at 3000 and at 210K. Expect radar vectors to RNAV (RNP)/Visual approach as assigned by ATC.

LANDING RWY 26: From KIPLE on track 127° to cross MATLL between 6000 and 7000 and at 230K, then on track 130° to cross NANAA at 4000 and at 210K, then on track 116° to NOMTE, then on track 077° to OLEKE, then on 077° track. Expect radar vectors to final approach course.

LANDING RWY 32: From KIPLE on track 134° to cross NAMPE between 6000 and 7000 and at 230K, then on track 135° to cross ACENE at 4000 and at 210K, then on track 137° to CALIM, then on track 137° to PEPIE, then on 137° track. Expect radar vectors to final approach course.