

(DUNNN.DUNNN5) 22195

AL-5715 (FAA)

DUNNN FIVE ARRIVAL (RNAV) Transition Routes

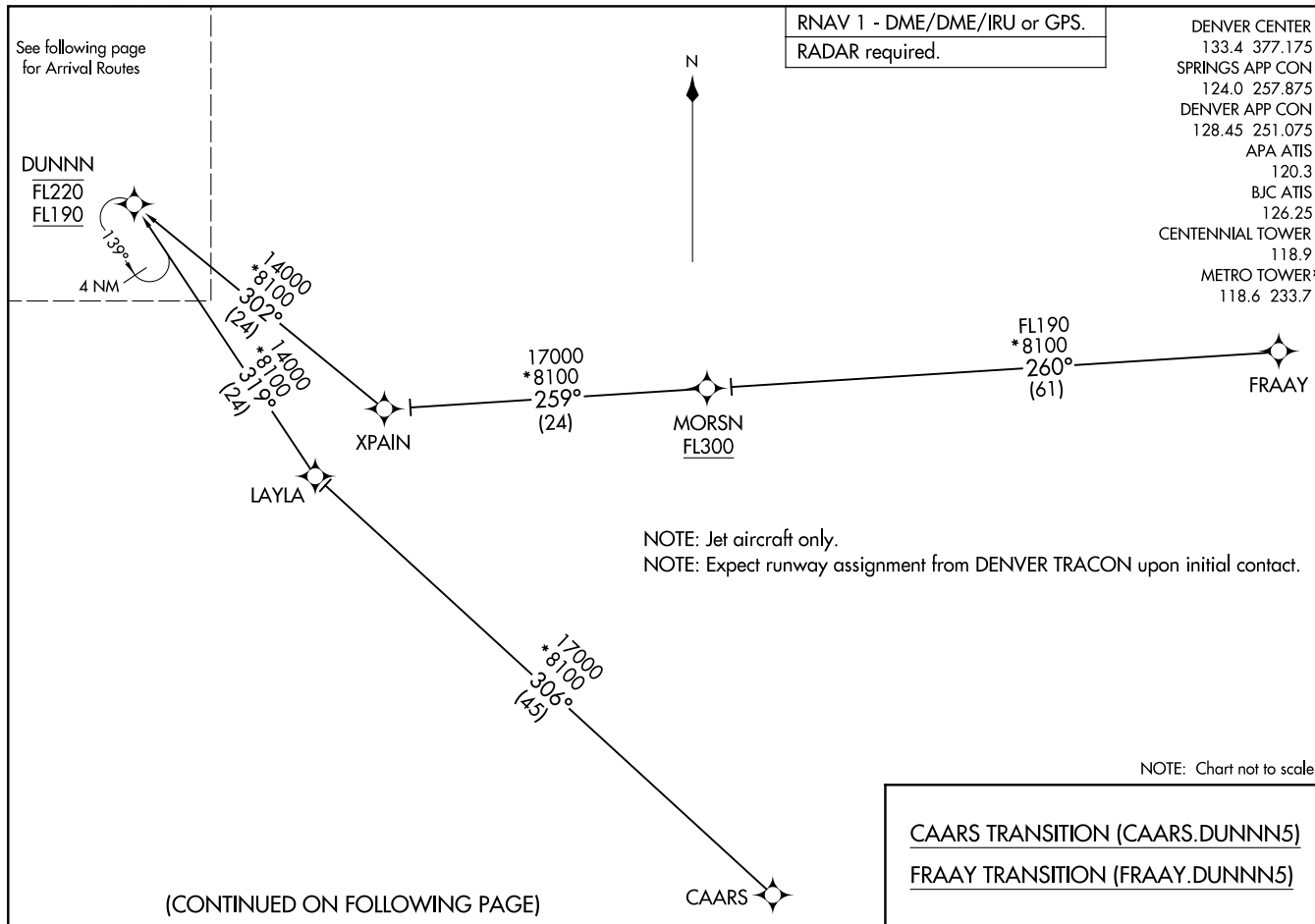
DENVER, COLORADO

DENVER CENTER
133.4 377.175
SPRINGS APP CON
124.0 257.875
DENVER APP CON
128.45 251.075
APA ATIS
120.3
BJC ATIS
126.25
CENTENNIAL TOWER
118.9
METRO TOWER*
118.6 233.7

RNAV 1 - DME/DME/IRU or GPS.
RADAR required.

NOTE: Chart not to scale.

CAARS TRANSITION (CAARS.DUNNN5)
FRAAY TRANSITION (FRAAY.DUNNN5)



SW-1, 18 APR 2024 to 16 MAY 2024

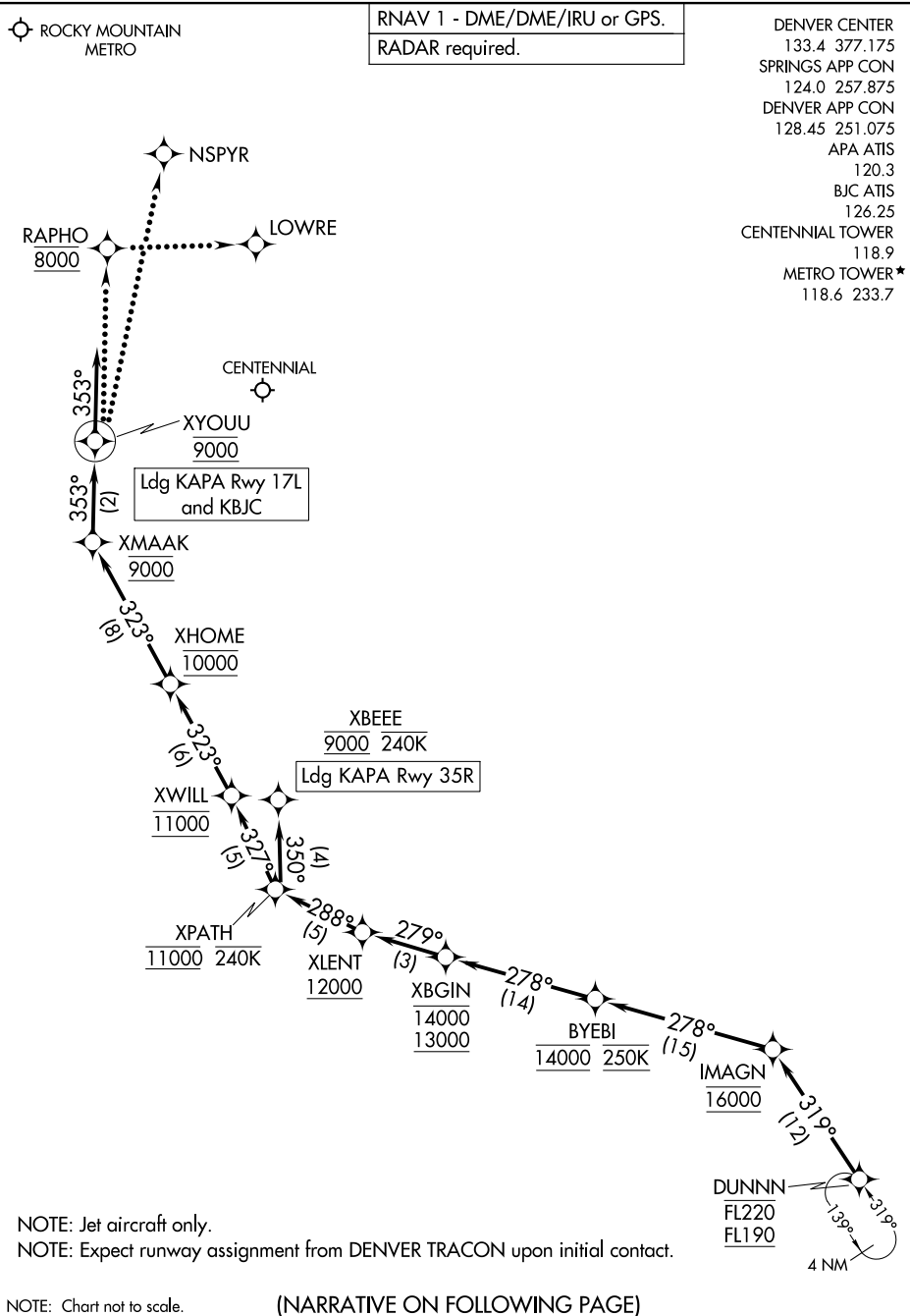
DUNNN FIVE ARRIVAL (RNAV) Transition Routes
(DUNNN.DUNNN5) 14JUL22

DENVER, COLORADO

AL-5715 (FAA)

DUNNN FIVE ARRIVAL (RNAV) Arrival Routes

DENVER, COLORADO



DUNNN FIVE ARRIVAL (RNAV) Arrival Routes

DENVER, COLORADO

(DUNNN.DUNNN5) 14JUL22

SW-1, 18 APR 2024 to 16 MAY 2024

ARRIVAL ROUTE DESCRIPTION

KAPA: From DUNNN on track 319° to cross IMAGN at 16000, then on track 278° to cross BYEBI at 14000 and at 250K.

LANDING KAPA RUNWAY 17L: From BYEBI on track 278° to cross XBGIN between 13000 and 14000, then on track 279° to cross XLENT at or above 12000, then on track 288° to cross XPATH at 11000 and at or below 240K, then on track 327° to cross XWILL at 11000, then on track 323° to cross XHOME at 10000, then on track 323° to cross XMAAK at 9000, then on track 353° to cross XYOUU at 9000, then on track 353°. Expect RADAR vectors to final approach course.

LANDING KAPA RUNWAY 35R: From BYEBI on track 278° to cross XBGIN between 13000 and 14000, then on track 279° to cross XLENT at or above 12000, then on track 288° to cross XPATH at 11000 and at or below 240K, then on track 350° to cross XBEEE at 9000 and at or below 240K. Expect ILS or LOC RWY 35R approach or as assigned by ATC.

LANDING KBJC: From DUNNN on track 319° to cross IMAGN at 16000, then on track 278° to cross BYEBI at 14000 and at 250K, then on track 278° to cross XBGIN between 13000 and 14000, then on track 279° to cross XLENT at or above 12000, then on track 288° to cross XPATH at 11000 and at or below 240K, then on track 327° to cross XWILL at 11000, then on track 323° to cross XHOME at 10000, then on track 323° to cross XMAAK at 9000, then on track 353° to cross XYOUU at 9000, then on track 353°. Expect RADAR vectors to final approach course.

LOST COMMUNICATIONS

LANDING CENTENNIAL:
From over XYOUU- proceed direct to RAPHO and cross at 8000, then direct LOWRE and execute the RNAV (GPS) RWY 17L approach.
From over XBEEE- execute the RNAV (GPS) RWY 35R approach.
Non-GPS equipped aircraft- execute the ILS or LOC RWY 35R approach.

LANDING ROCKY MOUNTAIN METRO:
From over XYOUU- proceed to NSPYR execute the ILS or LOC RWY 30R approach.

SW-1, 18 APR 2024 to 16 MAY 2024

SW-1, 18 APR 2024 to 16 MAY 2024