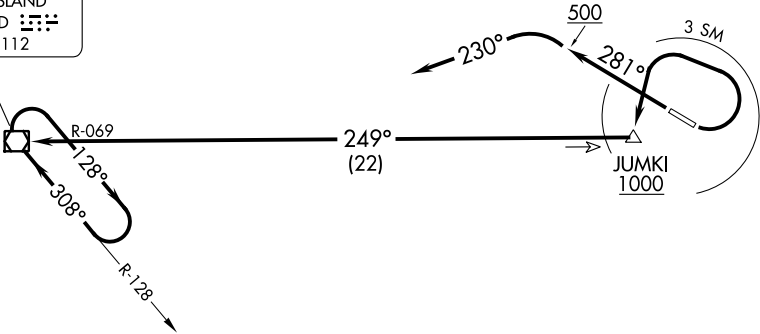


ANCHORAGE CENTER  
118.0  
SITKA RADIO  
122.45  
CTAF  
122.6

LEVEL ISLAND  
116.5 LVD  
Chan 112



TAKEOFF MINIMUMS

Rwy 10: 1000-3.  
Rwy 28: Standard with minimum climb of 280' per NM to 1100.

TAKEOFF OBSTACLE NOTES

Rwy 10: Trees and rising terrain beginning 52' from DER, 253' right of centerline, up to 148' AGL/1241' MSL.  
Rwy 28: Trees and rising terrain beginning 84' from DER, 266' left of centerline, up to 23' AGL/122' MSL.

NOTE: Rwy 10, DME required.

NOTE: Rapidly rising terrain south/southwest and east/northeast of airport to above 2500' within 3 miles of airport.

NOTE: Chart not to scale.

DEPARTURE ROUTE DESCRIPTION

TAKEOFF RUNWAY 10: Turn left as soon as practicable, climb in visual conditions until established on LVD R-069 at JUMKI/LVD 22 DME fix on a westerly course (visual conditions must be maintained from takeoff until established over JUMKI at/above 1000). Cross JUMKI at or above 1000 then climb on LVD R-069 to LVD VOR/DME. Thence . . . .

TAKEOFF RUNWAY 28: Climb heading 281° to 500 then climbing left turn heading 230° to intercept LVD R-069 to LVD VOR/DME. Do not exceed 180K until established on LVD R-069 westbound. Thence . . . .

. . . . continue climb in hold to MEA for route of flight.