

RNAV 1-DME/DME/IRU or GPS

RADAR required for non-GPS equipped aircraft

DENVER APP CON

119.3 307.3

D-ATIS ARR

125.6 379.9

DENVER TOWER

128.75 273.55 (Rwy 7-25)

132.35 239.275 (Rwys 8-26, 17L-35R)

124.3 322.45 (Rwy 17R-35L)

135.3 351.95 (Rwys 16L-34R, 16R-34L)

NOTE: Turbojet aircraft only.

NOTE: Turbojet aircraft descend via MACH number until intercepting 280K. Maintain 280K until slowed by STAR.

NOTE: Denver Center will issue "descend via" clearance and landing direction.

NOTE: HIPEE enroute transition: do not file - to be assigned by ATC.

NOTE: Expect runway assignment on initial contact with Denver TRACON.

NOTE: Landing North select Rwy 34R Transition.

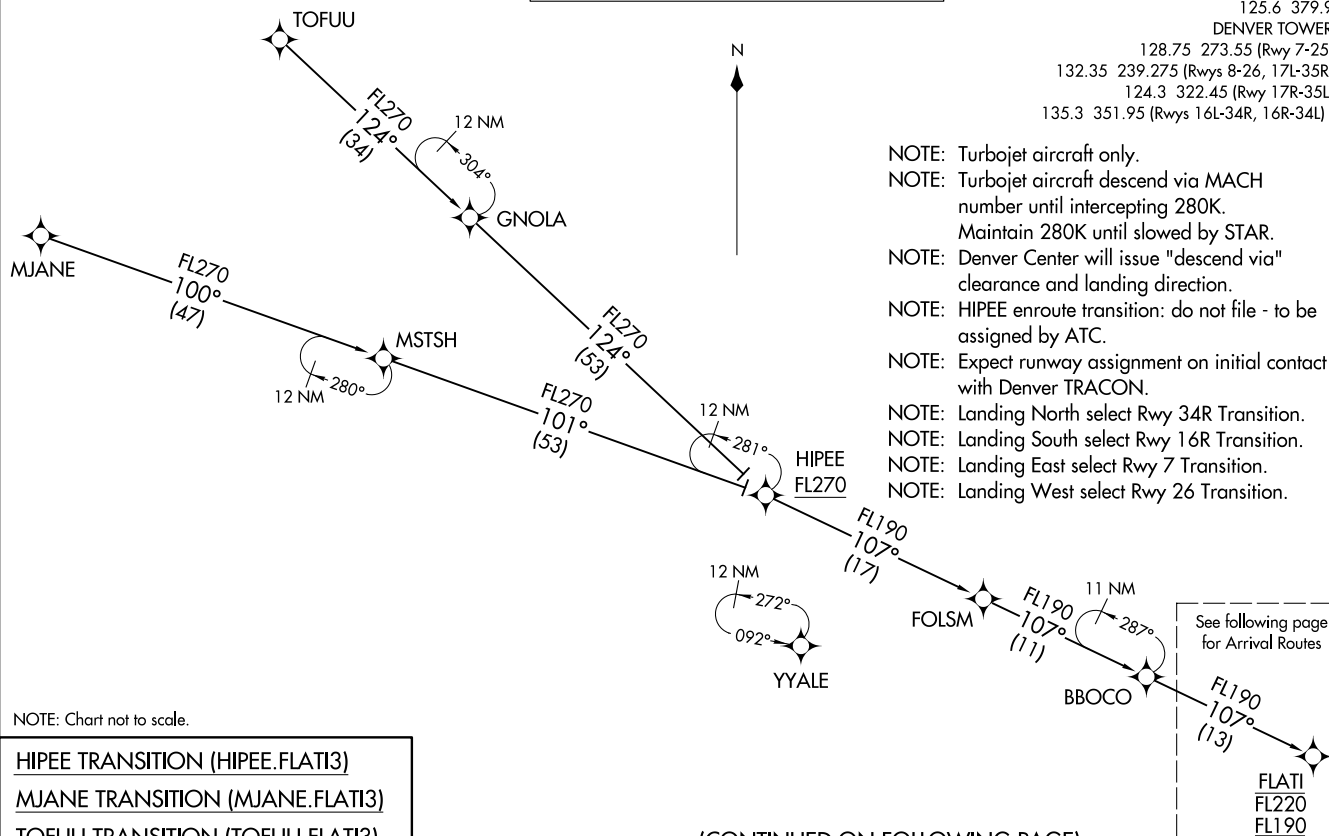
NOTE: Landing South select Rwy 16R Transition.

NOTE: Landing East select Rwy 7 Transition.

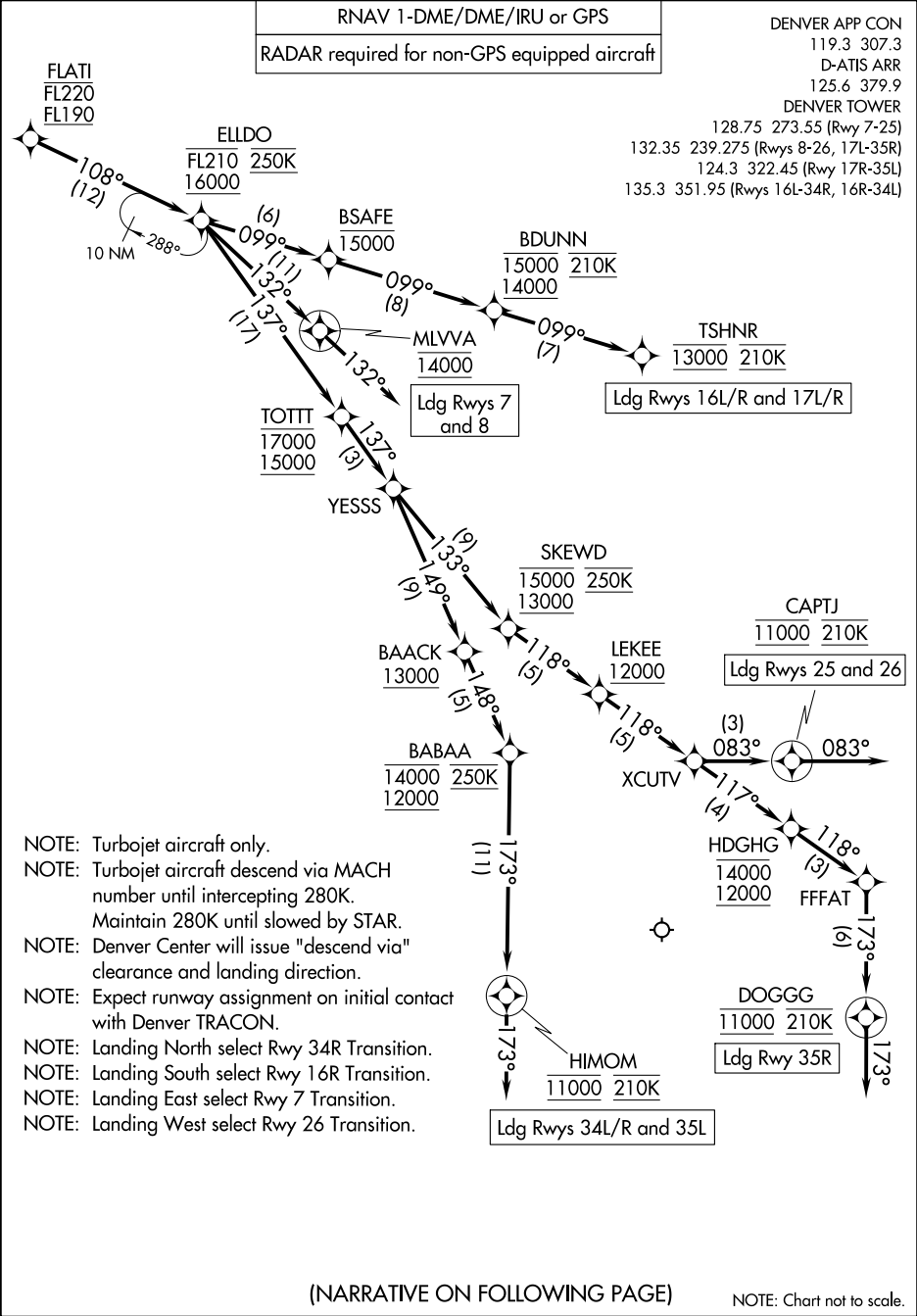
NOTE: Landing West select Rwy 26 Transition.

(FLATI.FLAT13) 23110

AL-9077 (FAA)

DENVER INTL (DEN)
DENVER, COLORADOFLATI THREE ARRIVAL (RNAV) Transition Routes
(FLATI.FLAT13) 07OCT21

(CONTINUED ON FOLLOWING PAGE)



ARRIVAL ROUTE DESCRIPTION

From FLATI on track 108° to cross ELLDO between 16000 and FL210 and at 250K.

LANDING RUNWAYS 7, 8: From ELLDO on track 132° to cross MLVVA at 14000, then on track 132°. Expect RADAR vectors to final approach course.

LANDING RUNWAYS 16L/R: From ELLDO on track 099° to cross BSAFE at or below 15000, then on track 099° to cross BDUNN between 14000 and 15000 and at 210K, then on track 099° to cross TSHNR at 13000 and at 210K. Expect ILS or LOC RWY 16L/R approach.

LANDING RUNWAYS 17L/R: From ELLDO on track 099° to cross BSAFE at or below 15000, then on track 099° to cross BDUNN between 14000 and 15000 and at 210K, then on track 099° to cross TSHNR at 13000 and at 210K. Expect ILS or LOC RWY 17L/R approach.

LANDING RUNWAYS 25, 26: From ELLDO on track 137° to cross TOTTT between 15000 and 17000, then on track 137° to YESSS, then on track 133° to cross SKEWD between 13000 and 15000 and at 250K, then on track 118° to cross LEKEE at or above 12000, then on track 118° to XCUTV, then on track 083° to cross CAPTJ at 11000 and at 210K, then on track 083°. Expect RADAR vectors to final approach course.

LANDING RUNWAYS 34L/R, 35L: From ELLDO on track 137° to cross TOTTT between 15000 and 17000, then on track 137° to YESSS, then on track 149° to cross BAACK at or above 13000, then on track 148° to cross BABAA between 12000 and 14000 and at 250K, then on track 173° to cross HIMOM at 11000 and at 210K, then on track 173°. Expect RADAR vectors to final approach course.

LANDING RUNWAY 35R: From ELLDO on track 137° to cross TOTTT between 15000 and 17000, then on track 137° to YESSS, then on track 133° to cross SKEWD between 13000 and 15000 and at 250K, then on track 118° to cross LEKEE at or above 12000, then on track 118° to XCUTV, then on track 117° to cross HDGHG between 12000 and 14000, then on track 118° to FFFAT, then on track 173° to cross DOGGG at 11000 and at 210K, then on track 173°. Expect RADAR vectors to final approach course.

LOST COMMUNICATIONS: In the event of lost communications prior to runway transition assignment, when DEN is landing south, execute the ILS RWY 16R, when DEN is landing north, execute the ILS RWY 34R.