

(NIIXX.NIIXX3) 23110

AL-9077 (FAA)

DENVER INTL (DEN)  
DENVER, COLORADO

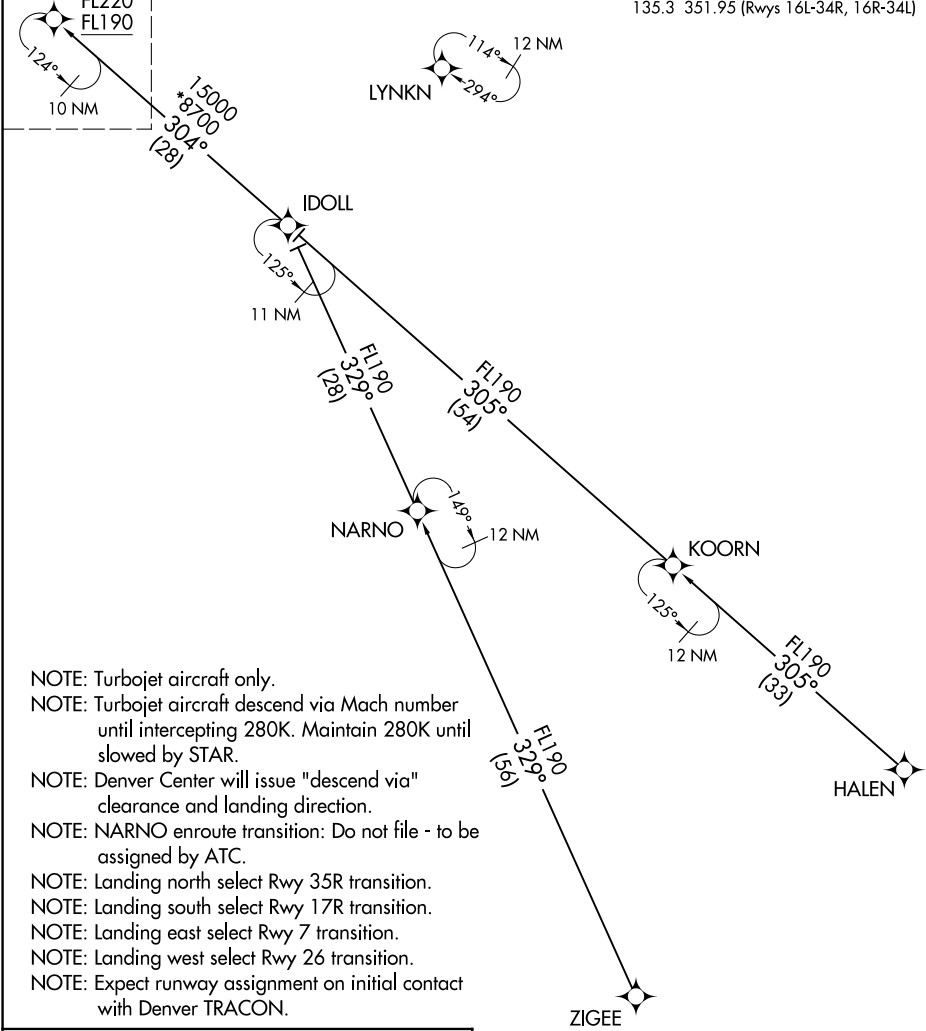
NIIXX THREE ARRIVAL (RNAV) Transition Routes

RNAV 1 - DME/DME/IRU or GPS
RADAR required for non-GPS equipped aircraft

DENVER APP CON  
126.55 269.525  
D-ATIS ARR  
125.6 379.9  
DENVER TOWER  
128.75 273.55 (Rwy 7-25)  
132.35 239.275 (Rwys 8-26, 17L-35R)  
124.3 322.45 (Rwy 17R-35L)  
135.3 351.95 (Rwys 16L-34R, 16R-34L)

See following page  
for arrival routes

NIIXX  
FL220  
FL190



- NOTE: Turbojet aircraft only.
- NOTE: Turbojet aircraft descend via Mach number until intercepting 280K. Maintain 280K until slowed by STAR.
- NOTE: Denver Center will issue "descend via" clearance and landing direction.
- NOTE: NARNO enroute transition: Do not file - to be assigned by ATC.
- NOTE: Landing north select Rwy 35R transition.
- NOTE: Landing south select Rwy 17R transition.
- NOTE: Landing east select Rwy 7 transition.
- NOTE: Landing west select Rwy 26 transition.
- NOTE: Expect runway assignment on initial contact with Denver TRACON.

<u>HALEN TRANSITION (HALEN.NIIXX3)</u>
<u>NARNO TRANSITION (NARNO.NIIXX3)</u>
<u>ZIGEE TRANSITION (ZIGEE.NIIXX3)</u>

(CONTINUED ON FOLLOWING PAGE)

NOTE: Chart not to scale.

NIIXX THREE ARRIVAL (RNAV) Transition Routes

(NIIXX.NIIXX3) 07OCT21

DENVER, COLORADO  
DENVER INTL (DEN)

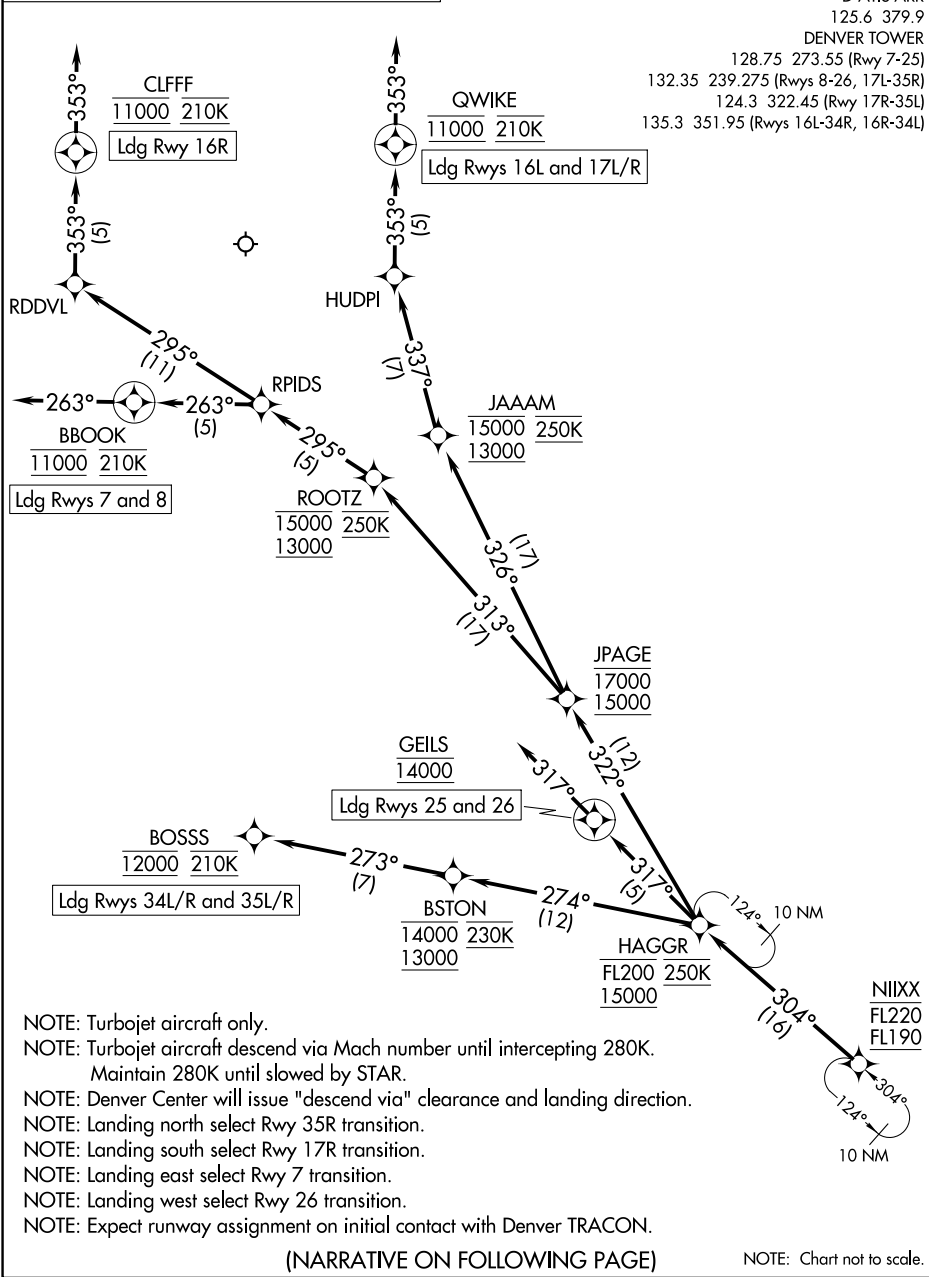
SW-1, 18 APR 2024 to 16 MAY 2024

SW-1, 18 APR 2024 to 16 MAY 2024

(NIIXX.NIIXX3) 23110

NIIXX THREE ARRIVAL (RNAV) Arrival Routes

RNAV 1 - DME/DME/IRU or GPS  
RADAR required for non-GPS equipped aircraft



NOTE: Turbojet aircraft only.  
NOTE: Turbojet aircraft descend via Mach number until intercepting 280K.  
Maintain 280K until slowed by STAR.  
NOTE: Denver Center will issue "descend via" clearance and landing direction.  
NOTE: Landing north select Rwy 35R transition.  
NOTE: Landing south select Rwy 17R transition.  
NOTE: Landing east select Rwy 7 transition.  
NOTE: Landing west select Rwy 26 transition.  
NOTE: Expect runway assignment on initial contact with Denver TRACON.

(NARRATIVE ON FOLLOWING PAGE)

NOTE: Chart not to scale.

NIIXX THREE ARRIVAL (RNAV) Arrival Routes

(NIIXX.NIIXX3) 07OCT21

DENVER, COLORADO  
DENVER INTL (DEN)

SW-1, 18 APR 2024 to 16 MAY 2024

SW-1, 18 APR 2024 to 16 MAY 2024

ARRIVAL ROUTE DESCRIPTION

From NIIXX on track 304° to cross HAGGR between 15000 and FL200 and at 250K.

LANDING RUNWAYS 7, 8: From HAGGR on track 322° to cross JPAGE between 15000 and 17000, then on track 313° to cross ROOTZ between 13000 and 15000 and at 250K, then on track 295° to RPIDS, then on track 263° to cross BBOOK at 11000 and at 210K, then on track 263°. Expect RADAR vectors to final approach course.

LANDING RUNWAYS 16L, 17L/R: From HAGGR on track 322° to cross JPAGE between 15000 and 17000, then on track 326° to cross JAAAM between 13000 and 15000 and at 250K, then on track 337° to HUDPI, then on track 353° to cross QWIKE at 11000 and at 210K, then on track 353°. Expect RADAR vectors to final approach course.

LANDING RUNWAY 16R: From HAGGR on track 322° to cross JPAGE between 15000 and 17000, then on track 313° to cross ROOTZ between 13000 and 15000 and at 250K, then on track 295° to RPIDS, then on track 295° to RDDVL, then on track 353° to cross CLFF at 11000 and at 210K, then on track 353°. Expect RADAR vectors to final approach course.

LANDING RUNWAYS 25, 26: From HAGGR on track 317° to cross GEILS at 14000, then on track 317°. Expect RADAR vectors to final approach course.

LANDING RUNWAYS 34L/R: From HAGGR on track 274° to cross BSTON between 13000 and 14000 and at 230K, then on track 273° to cross BOSSS at 12000 and at 210K. Expect ILS or LOC RWY 34L/R approach.

LANDING RUNWAYS 35L/R: From HAGGR on track 274° to cross BSTON between 13000 and 14000 and at 230K, then on track 273° to cross BOSSS at 12000 and at 210K. Expect ILS or LOC RWY 35L/R approach.

LOST COMMUNICATIONS: In the event of lost communications prior to runway transition assignment, when DEN is landing south, execute the ILS RWY 17R, when DEN is landing north, execute the ILS RWY 35R.