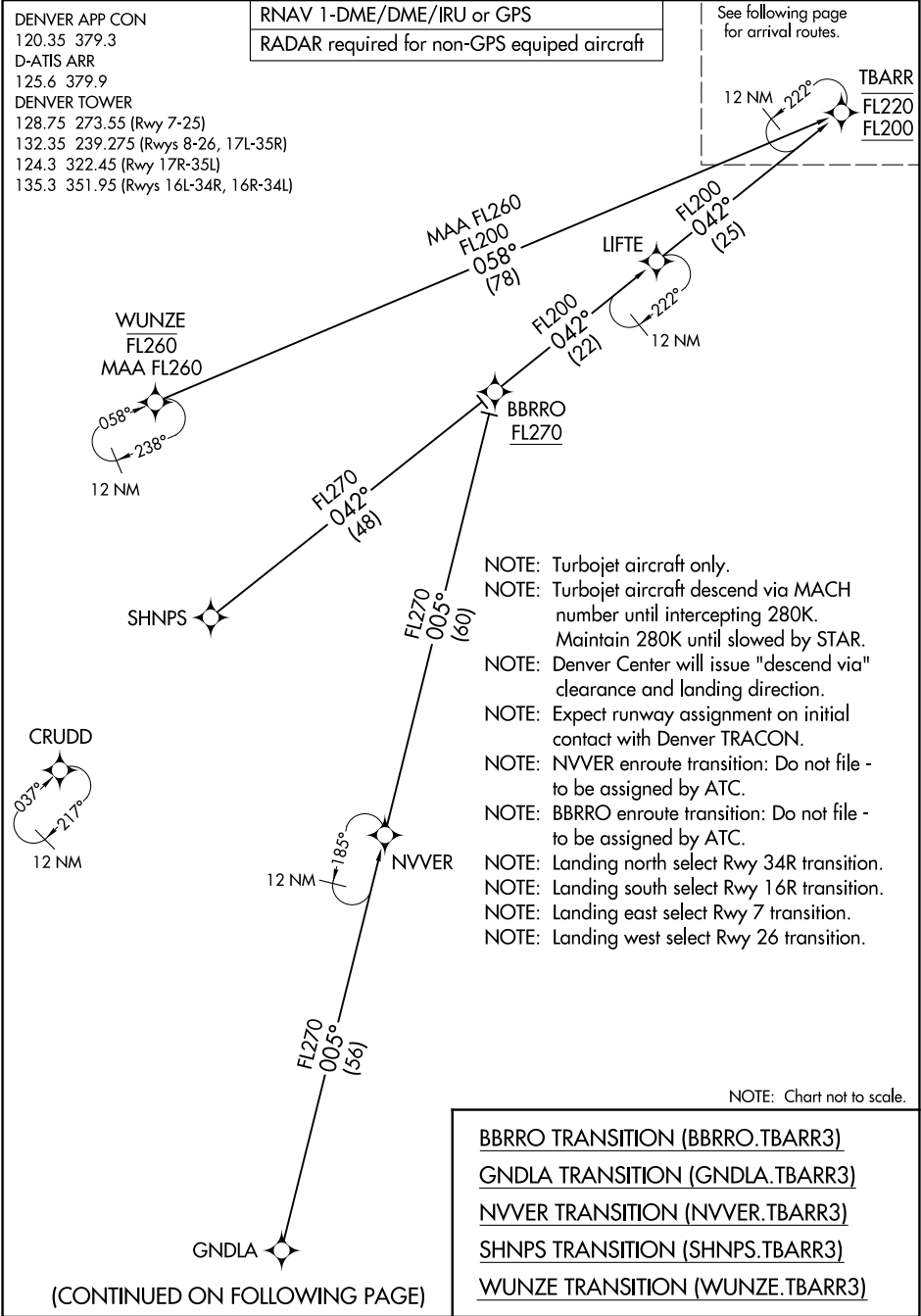


TBARR THREE ARRIVAL (RNAV) Transition Routes



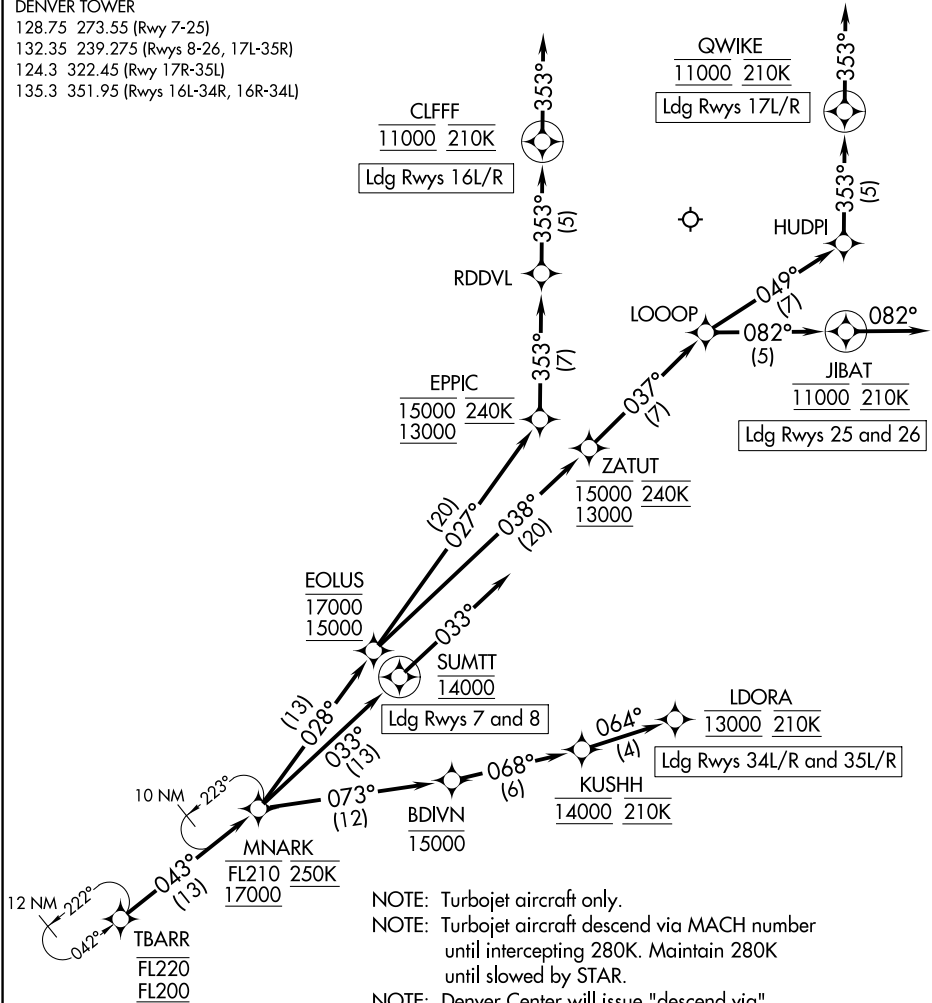
SW-1, 18 APR 2024 to 16 MAY 2024

SW-1, 18 APR 2024 to 16 MAY 2024

TBARR THREE ARRIVAL (RNAV) Arrival Routes

DENVER APP CON
120.35 379.3
D-ATIS ARR
125.6 379.9
DENVER TOWER
128.75 273.55 (Rwy 7-25)
132.35 239.275 (Rwys 8-26, 17L-35R)
124.3 322.45 (Rwy 17R-35L)
135.3 351.95 (Rwys 16L-34R, 16R-34L)

RNAV 1-DME/DME/IRU or GPS
RADAR required for non-GPS equipped aircraft



NOTE: Turbojet aircraft only.
NOTE: Turbojet aircraft descend via MACH number until intercepting 280K. Maintain 280K until slowed by STAR.
NOTE: Denver Center will issue "descend via" clearance and landing direction.
NOTE: Expect runway assignment on initial contact with Denver TRACON.
NOTE: Landing north select Rwy 34R transition.
NOTE: Landing south select Rwy 16R transition.
NOTE: Landing east select Rwy 7 transition.
NOTE: Landing west select Rwy 26 transition.

(NARRATIVE ON FOLLOWING PAGE)

NOTE: Chart not to scale.

TBARR THREE ARRIVAL (RNAV) Arrival Routes

DENVER, COLORADO
DENVER INTL (DEN)

ARRIVAL ROUTE DESCRIPTION

From TBARR on track 043° to cross MNARK between 17000 and FL210 and at 250K.

LANDING RUNWAYS 7, 8: From MNARK on track 033° to cross SUMTT at 14000, then on track 033°. Expect RADAR vectors to final approach course.

LANDING RUNWAYS 16L/R: From MNARK on track 028° to cross EOLUS between 15000 and 17000, then on track 027° to cross EPPIC between 13000 and 15000 and at 240K, then on track 353° to RDDVL, then on track 353° to cross CLFFF at 11000 and at 210K, then on track 353°. Expect RADAR vectors to final approach course.

LANDING RUNWAYS 17L/R: From MNARK on track 028° to cross EOLUS between 15000 and 17000, then on track 038° to cross ZATUT between 13000 and 15000 and at 240K, then on track 037° to LOOOP, then on track 049° to HUDPI, then on track 353° to cross QWIKI at 11000 and at 210K, then on track 353°. Expect RADAR vectors to final approach course.

LANDING RUNWAYS 25, 26: From MNARK on track 028° to cross EOLUS between 15000 and 17000, then on track 038° to cross ZATUT between 13000 and 15000 and at 240K, then on track 037° to LOOOP, then on track 082° to cross JIBAT at 11000 and at 210K, then on track 082°. Expect RADAR vectors to final approach course.

LANDING RUNWAYS 34L/R: From MNARK on track 073° to cross BDIVN at or below 15000, then on track 068° to cross KUSHH at 14000 and at 210K, then on track 064° to cross LDORA at 13000 and at 210K. Expect ILS or LOC RWY 34L/R approach.

LANDING RUNWAYS 35L/R: From MNARK on track 073° to cross BDIVN at or below 15000, then on track 068° to cross KUSHH at 14000 and at 210K, then on track 064° to cross LDORA at 13000 and at 210K. Expect ILS or LOC RWY 35L/R approach.

LOST COMMUNICATIONS: In the event of lost communications prior to runway transition assignment, when DEN is landing south, execute the ILS RWY 16R, when DEN is landing north, execute the ILS RWY 35L.