



APP CRS <b>210°</b>	Rwy Idg TDZE Apt Elev	<b>N/A</b> <b>N/A</b> <b>N/A</b>
------------------------	-----------------------------	--

COPTER RNAV (GPS) 210°  
WEST 30TH ST (JRA)

 	<p>DME/DME RNP-0.3 NA.</p> <p>Radar required.</p> <p>Use Teterboro alimeter setting when not received use LaGuardia alimeter setting.</p>	<p>MISSED APPROACH: Climbing left turn to 2000 direct JEDL and hold.</p>
--	---	--

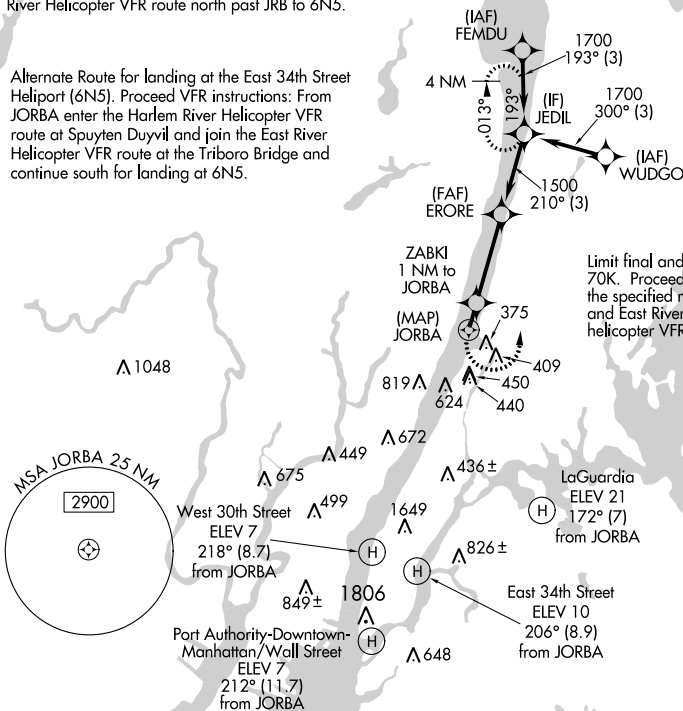
LA GUARDIA APP CON <b>126.05</b>	NEWARK APP CON <b>127.85</b>	UNICOM <b>123.050</b> (CTAF) <b>0</b>
-------------------------------------	---------------------------------	--

Proceed VFR instructions: From JORBA enter Hudson River helicopter VFR route at Spuyten Duyvil and continue south for landing at West 30th Street Heliport (JRA). Continue south and join the East River helicopter VFR route at Battery Park for landing at Wall Street Heliport (JRB). For landing at the East 34th Street Heliport (6NS) continue following East River Helicopter VFR route north past JRB to 6NS.

Limit initial and intermediate approach to 90K.

Alternate Route for landing at the East 34th Street Heliport (6N5). Proceed VFR instructions: From JORBA enter the Harlem River Helicopter VFR route at Spuyten Duyvil and join the East River Helicopter VFR route at the Triboro Bridge and continue south for landing at 6N5.

Increase to 90K upon reaching the missed approach altitude.



2000	JEDIL		
Proceed VFR from MAP (MAP) JORBA	ZABKI 1 NM to JORBA	ERORE 1500	JEDIL 1700
1 NM		3.3 NM	3 NM
COPTER			
CATEGORY	LNAV MDA 780- $\frac{3}{4}$ 350 (400- $\frac{3}{4}$ )		