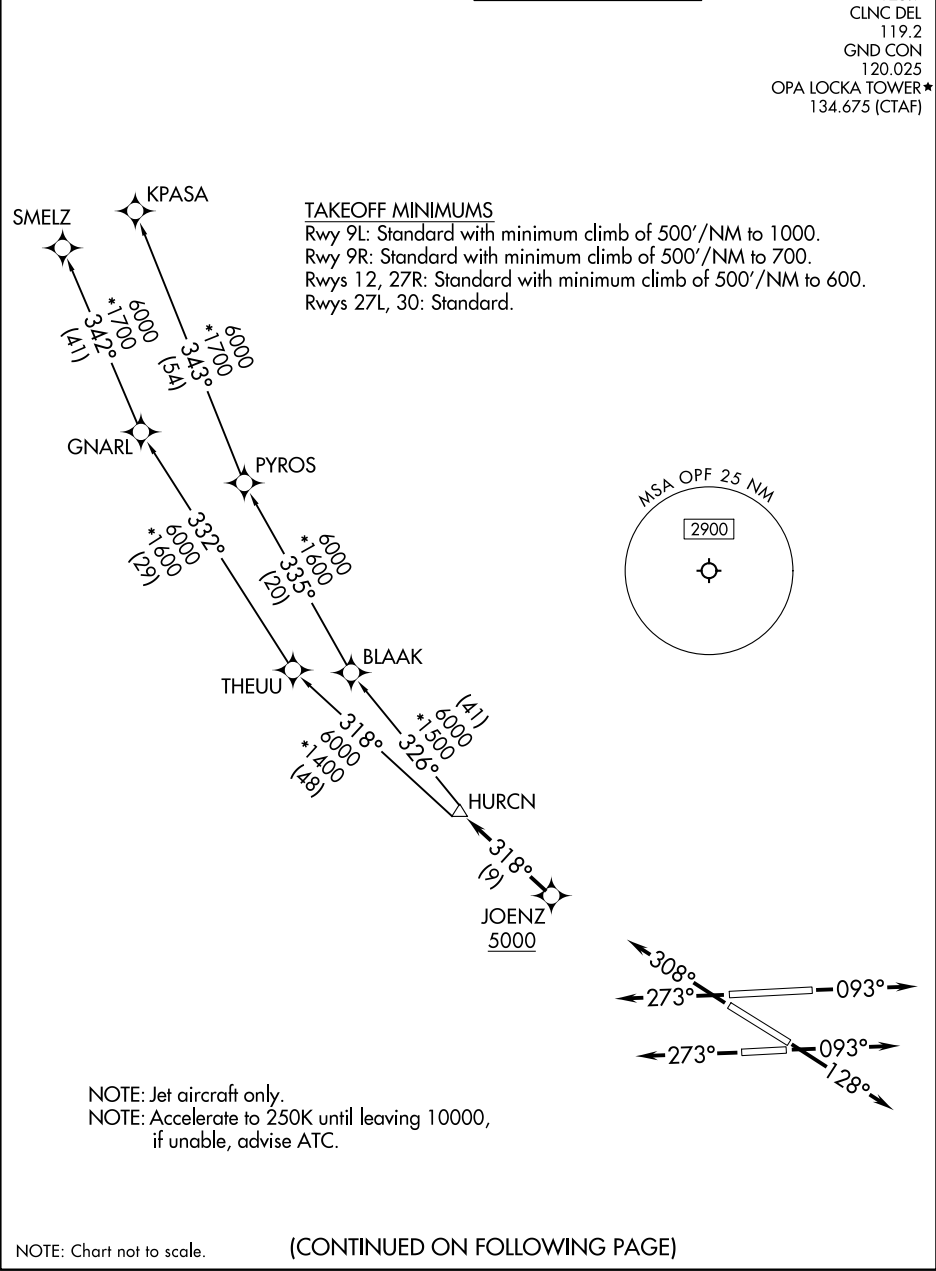


RNAV-1 DME/DME/IRU or GPS.	TOP ALTITUDE: ASSIGNED BY ATC	MIAMI DEP CON 119.45 290.325 ATIS 125.9 CLNC DEL 119.2 GND CON 120.025 OPA LOCKA TOWER★ 134.675 (CTAF)
RADAR required.		



DEPARTURE ROUTE DESCRIPTION		
<div><div>▼</div><div><div><div><div>TAKEOFF RUNWAYS 9L/R: Climb on heading 093° or as assigned by ATC for RADAR vectors to cross JOENZ at or above 5000, thence. . .</div><div>TAKEOFF RUNWAY 12: Climb on heading 128° or as assigned by ATC for RADAR vectors to cross JOENZ at or above 5000, thence. . .</div><div>TAKEOFF RUNWAYS 27L/R: Climb on heading 273° or as assigned by ATC for RADAR vectors to cross JOENZ at or above 5000, thence. . .</div><div>TAKEOFF RUNWAY 30: Climb on heading 308° or as assigned by ATC for RADAR vectors to cross JOENZ at or above 5000, thence. . .</div></div><div><div>. . .on track 318° to HURCN, then on transition. Maintain ATC assigned altitude. Expect clearance to filed altitude within 10 minutes after departure.</div></div><div><div>KPASA TRANSITION (HURCN4.KPASA)</div><div>SMELZ TRANSITION (HURCN4.SMELZ)</div></div></div></div></div>		