

TAKEOFF MINIMUMS

Rwy 8: NA - Terrain.

Rwy 17L: 600-1 $\frac{3}{8}$ with minimum climb of 415' per NM to 8700 or standard with minimum climb of 745' per NM to 7200, or 3200-3 for VCOA.

Rwy 17R: Standard with minimum climb of 420' per NM to 8700, or 3200-3 for VCOA.

Rwy 26: Standard with minimum climb of 485' per NM to 7900, or 3200-3 for VCOA.

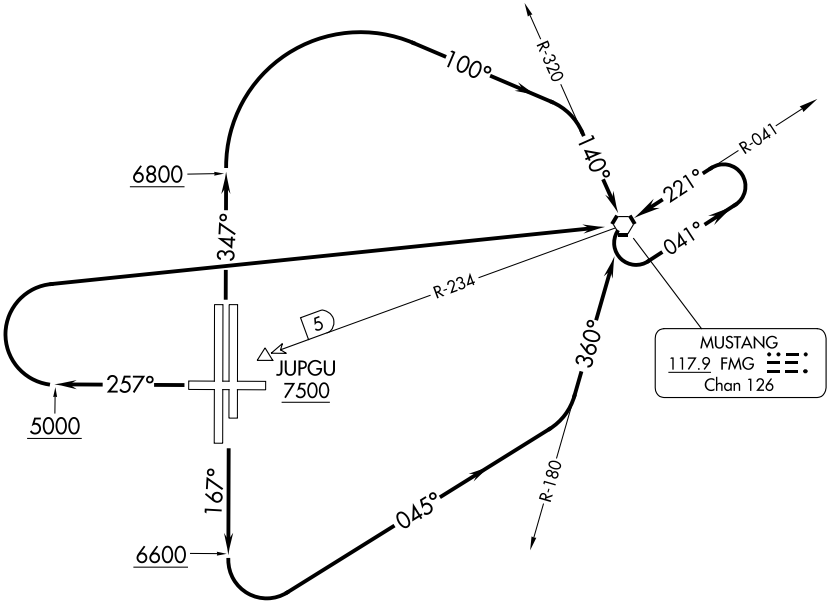
Rwy 35L: Standard with minimum climb of 375' per NM to 8600, or 3200-3 for VCOA.

Rwy 35R: 400-1 $\frac{1}{2}$ with a minimum climb of 270' per NM to 8600 or standard with a minimum climb of 420' per NM to 7400, or 3200-3 for VCOA.

NORCAL DEP CON

119.2 279.55 (17L/R)

126.3 353.9 (Rwys 26, 35L/R)



NOTE: Chart not to scale. (CONTINUED ON FOLLOWING PAGE)

DEPARTURE ROUTE DESCRIPTION

TAKEOFF RUNWAYS 17L/R: Climb on heading 167° to 6600, then climbing left turn heading 045° to intercept FMG VORTAC R-180 to FMG VORTAC, continue climb in FMG VORTAC holding pattern to cross FMG VORTAC at or above MEA/MCA for route of flight.

TAKEOFF RUNWAY 26: Climb on heading 257° to 5000, then climbing right turn direct FMG VORTAC, continue climb in FMG VORTAC holding pattern to cross FMG VORTAC at or above MEA/MCA for route of flight.

TAKEOFF RUNWAYS 35L/R: Climb on heading 347° to 6800, then climbing right turn heading 100° to intercept FMG VORTAC R-320 to FMG VORTAC, continue climb in FMG VORTAC holding pattern to cross FMG VORTAC at or above MEA/MCA for route of flight.

VCOA ALL RUNWAYS: Obtain ATC approval for VCOA when requesting IFR clearance. Climb in visual conditions to cross JUPGU (FMG R-234/5 DME) at or above 7500 on FMG R-234 to FMG VORTAC, then continue climb in FMG VORTAC holding pattern to cross FMG VORTAC at or above MEA/MCA for route of flight.

TAKEOFF OBSTACLE NOTES

- Rwy 17L: Building 78' from DER, 262' left of centerline, 8' AGL/4413' MSL.
Antenna 130' from DER, 379' right of centerline, 41' AGL/4444' MSL.
Tree 719' from DER, 555' left of centerline, 4434' MSL.
Tree 1055' from DER, 132' left of centerline, 4435' MSL.
Pole 1108' from DER, 487' left of centerline, 34' AGL/4445' MSL.
Pole, building beginning 1331' from DER, 458' left of centerline, up to 34' AGL/4446' MSL.
Pole 1428' from DER, 229' left of centerline, 36' AGL/4449' MSL.
Tree 1843' from DER, 132' left of centerline, 4456' MSL.
Tree 1879' from DER, 126' left of centerline, 4466' MSL.
Tower 2389' from DER, 975' left of centerline, 55' AGL/4469' MSL.
Tower 2747' from DER, 853' left of centerline, 66' AGL/4482' MSL.
Terrain 4845' from DER, 1693' left of centerline, 4546' MSL.
Terrain 5161' from DER, 1451' left of centerline, 4547' MSL.
Terrain beginning 5253' from DER, 1698' left of centerline, up to 4776' MSL.
Terrain 5470' from DER, 1838' left of centerline, 4846' MSL.
Terrain beginning 5524' from DER, 1371' left of centerline, up to 4919' MSL.
Terrain beginning 5702' from DER, 1691' left of centerline, up to 4926' MSL.
Terrain beginning 5874' from DER, 1768' left of centerline, up to 4953' MSL.
Terrain 1 NM from DER, 1981' left of centerline, 4837' MSL.
- Rwy 17R: Lighting 10' from DER, 85' left of centerline, 1' AGL/4415' MSL.
Lighting 10' from DER, 85' right of centerline, 1' AGL/4415' MSL.
Tree 746' from DER, 379' left of centerline, 4435' MSL.
Trees beginning 1156' from DER, 772' left of centerline, up to 4456' MSL.
Tree 1306' from DER, 840' left of centerline, 4457' MSL.
Trees beginning 1409' from DER, 818' left of centerline, up to 4466' MSL.
Trees beginning 1593' from DER, 658' left of centerline, up to 4474' MSL.
Tree 1873' from DER, 936' left of centerline, 4475' MSL.
Tree 2164' from DER, 653' left of centerline, 4478' MSL.
Trees beginning 2783' from DER, 172' right of centerline, up to 4501' MSL.
Tree 3135' from DER, 590' right of centerline, 4507' MSL.
Tree 3285' from DER, 504' right of centerline, 4510' MSL.
- Rwy 26: Lighting 9' from DER, 54' left of centerline, 1' AGL/4410' MSL.
Lighting 10' from DER, 54' right of centerline, 1' AGL/4410' MSL.
Pole 119' from DER, 464' left of centerline, 32' AGL/4440' MSL.
Pole, transmission line, fence beginning 142' from DER, 270' right of centerline, up to 30' AGL/4438' MSL.
Pole 499' from DER, 466' left of centerline, 39' AGL/4452' MSL.
Pole 1274' from DER, 469' left of centerline, 39' AGL/4458' MSL.
Pole 1369' from DER, 387' right of centerline, 27' AGL/4447' MSL.
Sign 1501' from DER, 206' right of centerline, 30' AGL/4448' MSL.
Tree 1618' from DER, 42' right of centerline, 4473' MSL.
Signs, trees beginning 1656' from DER, 66' left of centerline, up to 59' AGL/4482' MSL.
Tree 1663' from DER, 15' right of centerline, 4475' MSL.
Trees beginning 1664' from DER, 16' right of centerline, up to 4484' MSL.
Tree 1878' from DER, 28' left of centerline, 4483' MSL.
Trees beginning 1913' from DER, 162' left of centerline, up to 4484' MSL.
Trees beginning 1916' from DER, 20' left of centerline, up to 4487' MSL.
Trees beginning 2053' from DER, 25' left of centerline, up to 4497' MSL.
Tree 2099' from DER, 206' right of centerline, 4490' MSL.
Trees beginning 2102' from DER, 12' right of centerline, up to 4493' MSL.
Trees beginning 2255' from DER, 45' right of centerline, up to 4500' MSL.
Trees beginning 2268' from DER, 5' left of centerline, up to 4506' MSL.
Pole, tree beginning 2635' from DER, 114' right of centerline, up to 100' AGL/4527' MSL.
Antenna 3413' from DER, 298' left of centerline, 80' AGL/4514' MSL.

(CONTINUED ON FOLLOWING PAGE)

SW-4, 16 MAY 2024 to 13 JUN 2024

SW-4, 16 MAY 2024 to 13 JUN 2024

(CONTINUED)

TAKEOFF OBSTACLE NOTES

- Rwy 35L: Lighting 10' from DER, 85' left of centerline, 2' AGL/4416' MSL.
Lighting 10' from DER, 86' right of centerline, 2' AGL/4416' MSL.
Sign 40' from DER, 437' right of centerline, 4' AGL/4417' MSL.
Lighting 999' from DER, on centerline, 22' AGL/4440' MSL.
Antenna 1029' from DER, 49' left of centerline, 22' AGL/4441' MSL.
Antenna 1029' from DER, 49' right of centerline, 23' AGL/4441' MSL.
Pole 1176' from DER, 629' right of centerline, 32' AGL/4451' MSL.
Tree 1193' from DER, 400' left of centerline, 4454' MSL.
Trees beginning 1216' from DER, 227' left of centerline, up to 4476' MSL.
Tree 1229' from DER, 349' right of centerline, 4458' MSL.
Trees beginning 1267' from DER, 207' right of centerline, up to 4465' MSL.
Tree 1974' from DER, 898' right of centerline, 4469' MSL.
Tree 2326' from DER, 938' right of centerline, 4473' MSL.
Tree 2350' from DER, 885' right of centerline, 4474' MSL.
Trees beginning 2489' from DER, 178' right of centerline, up to 4493' MSL.
Trees, poles beginning 2528' from DER, 16' right of centerline, up to 4498' MSL.
Trees beginning 2789' from DER, 69' left of centerline, up to 4490' MSL.
Trees beginning 2877' from DER, 292' left of centerline, up to 4492' MSL.
- Rwy 35R: Sign 40' from DER, 262' left of centerline, 4' AGL/4417' MSL.
Building 87' from DER, 272' right of centerline, 7' AGL/4420' MSL.
Lighting 999' from DER, 699' left of centerline, 22' AGL/4440' MSL.
Antennas beginning 1028' from DER, 649' left of centerline, up to 22' AGL/4441' MSL.
Poles beginning 1066' from DER, 165' right of centerline, up to 40' AGL/4458' MSL.
Pole 1176' from DER, 70' left of centerline, 32' AGL/4451' MSL.
Tree 1229' from DER, 349' left of centerline, 4458' MSL.
Tree 1267' from DER, 492' left of centerline, 4465' MSL.
Trees beginning 1711' from DER, 255' right of centerline, up to 4466' MSL.
Tree 1973' from DER, 198' right of centerline, 4469' MSL.
Trees beginning 1991' from DER, 186' right of centerline, up to 4491' MSL.
Trees, pole beginning 2489' from DER, 361' right of centerline, up to 4493' MSL.
Tree 2505' from DER, 520' left of centerline, 4480' MSL.
Trees, pole beginning 2528' from DER, 201' left of centerline, up to 4498' MSL.
Pole 2815' from DER, 531' right of centerline, 82' AGL/4497' MSL.

SW-4, 16 MAY 2024 to 13 JUN 2024

SW-4, 16 MAY 2024 to 13 JUN 2024