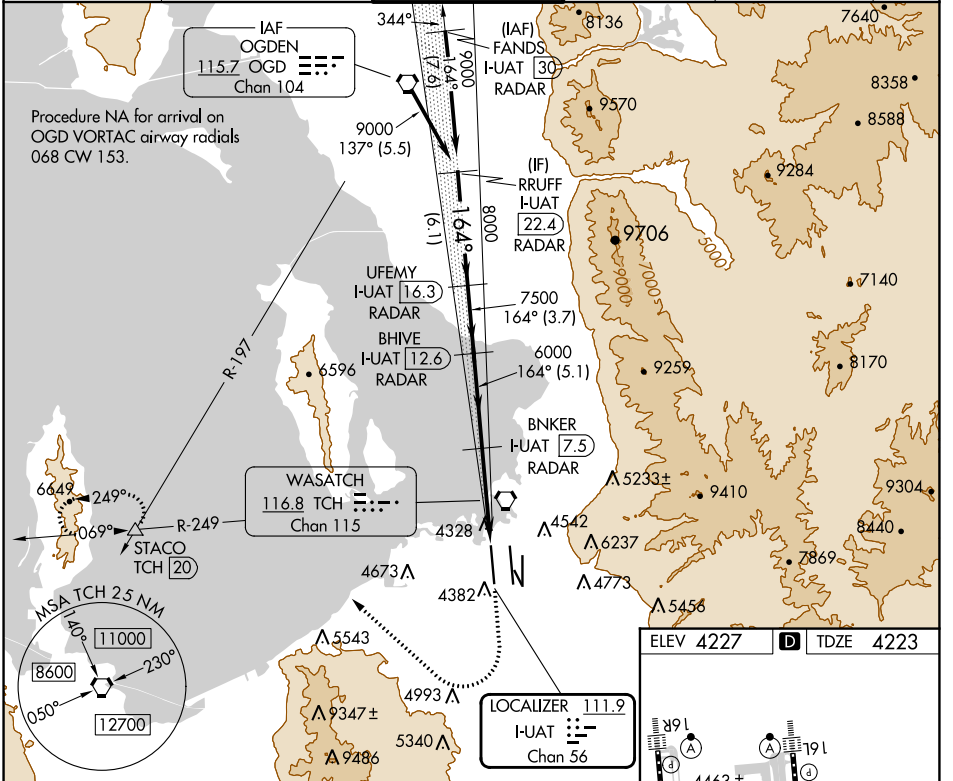


| | | |
|--|------------------------|---|
| LOC/DME I-UAT 111.9 Chan 56 | APP CRS 164° | Rwy ldg 12000 TDZE 4223 Apt Elev 4227 |
|--|------------------------|---|

ILS RWY 16R (SA CAT I)

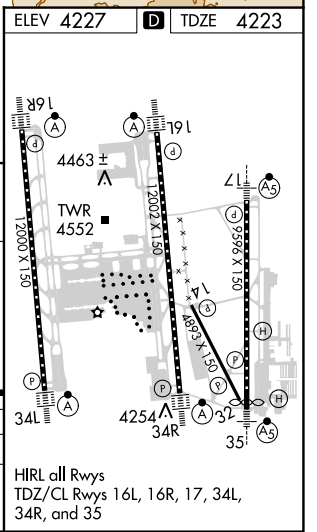
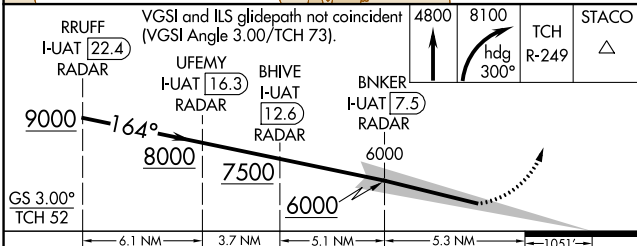
SALT LAKE CITY INTL (SLC)

| | | | | | |
|---|--|---|---|----------------------------------|-------|
| DME or RADAR required. | | ALSIF-2 | MISSED APPROACH: Climb to 4800 then climbing right turn to 8100 on heading 300° and on TCH VORTAC R-249 to STACO INT/TCH 20 DME and hold. | | |
| ▼ Simultaneous approach authorized. Requires specific OPSPEC, MSPEC, or LOA approval and use of HUD to DH. | | (A) | | | |
| D-ATIS 124.75 125.625 | SALT LAKE CITY APP CON 125.7 284.6 | SALT LAKE CITY TOWER 132.65 336.4 | GND CON 123.775 348.6 | CLNC DEL 127.3 379.975 | CPDLC |



SW-4, 16 MAY 2024 to 13 JUN 2024

SW-4, 16 MAY 2024 to 13 JUN 2024



| | | | | |
|--|-----------------------|---|---|---|
| CATEGORY | A | B | C | D |
| S-ILS 16R | RA 157/14 150 DA 4373 | | | |
| SA CATEGORY I ILS - SPECIAL AIRCREW & AIRCRAFT CERTIFICATION REQUIRED | | | | |