

AMEEE ONE DEPARTURE (RNAV)

RONALD REAGAN WASHINGTON NTL (DCA)

AL-443 (FAA)

WASHINGTON, DC

TOP ALTITUDE:
5000

DOGUE
4000 250K

D-ATIS

132.65

CLNC DEL

128.25

CPDLC

GND CON

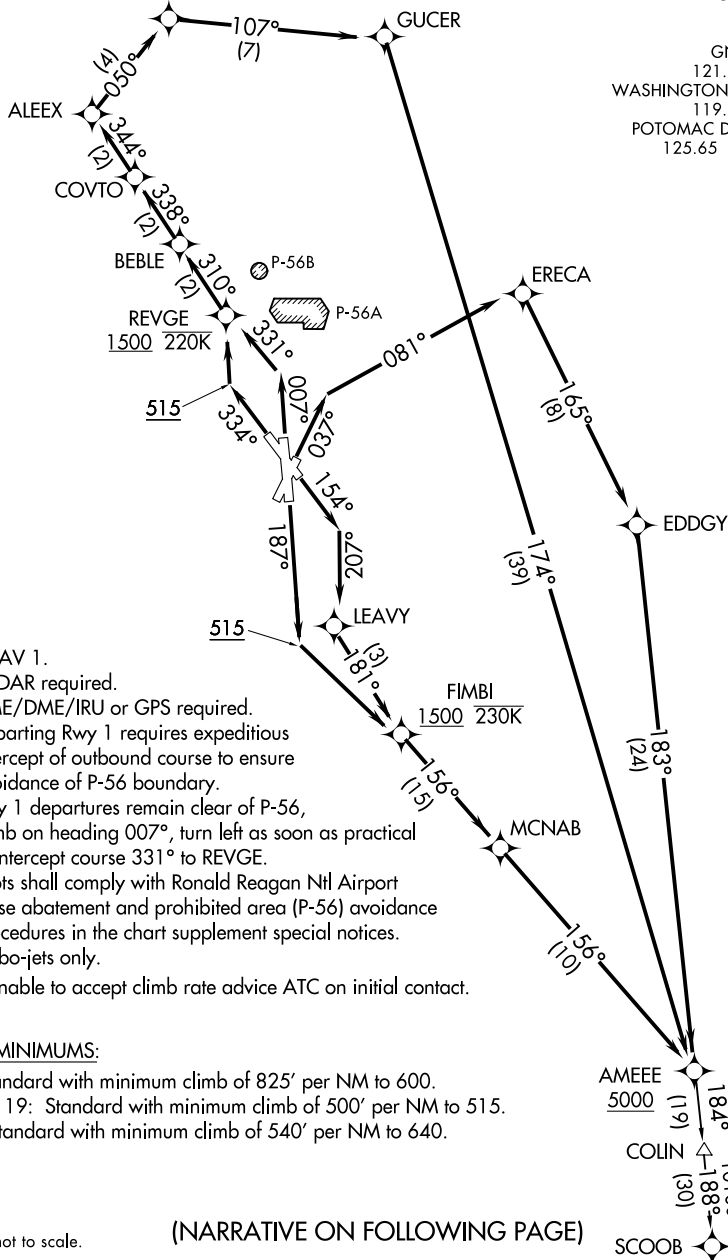
121.7 257.6

WASHINGTON TOWER

119.1 257.6

POTOMAC DEP CON

125.65 348.725



NOTE: RNAV 1.

NOTE: RADAR required.

NOTE: DME/DME/IRU or GPS required.

NOTE: Departing Rwy 1 requires expeditious intercept of outbound course to ensure avoidance of P-56 boundary.

NOTE: Rwy 1 departures remain clear of P-56, climb on heading 007°, turn left as soon as practical to intercept course 331° to REVGE.

NOTE: Pilots shall comply with Ronald Reagan Ntl Airport noise abatement and prohibited area (P-56) avoidance procedures in the chart supplement special notices.

NOTE: Turbo-jets only.

NOTE: If unable to accept climb rate advice ATC on initial contact.

TAKEOFF MINIMUMS:

Rwy 1: Standard with minimum climb of 825' per NM to 600.

Rwy 4, 15, 19: Standard with minimum climb of 500' per NM to 515.

Rwy 33: Standard with minimum climb of 540' per NM to 640.

NOTE: Chart not to scale.

(NARRATIVE ON FOLLOWING PAGE)

AMEEE ONE DEPARTURE (RNAV)

(AMEEE1.AMEEE) 31DEC20

WASHINGTON, DC

RONALD REAGAN WASHINGTON NTL (DCA)

NE-3, 16 MAY 2024 to 13 JUN 2024



DEPARTURE ROUTE DESCRIPTION

TAKEOFF RUNWAY 1: Climb on heading 007° to intercept course 331° to REVGE, cross REVGE at or above 1500 and at or below 220K, then on track 310° to BEBLE, then on track 338° to COVTO, then on track 344° to ALEEX, then on track 050° to DOGUE, cross DOGUE at or above 4000 and at or below 250K, then on track 107° to GUCER, then on track 174° to AMEEE, cross AMEEE at or above 5000, thence....

TAKEOFF RUNWAY 4: Climb on heading 037° to intercept course 081° to ERECA, then on track 165° to EDDGY, then on track 183° to AMEEE, cross AMEEE at or above 5000, thence....

TAKEOFF RUNWAY 15: Climb on heading 154° to intercept course 207° to LEAVY, then on track 181° to FIMBI, cross FIMBI at or above 1500 and at or below 230K, then on track 156° to MCNAB, then on track 156° to AMEEE, cross AMEEE at or above 5000, thence....

TAKEOFF RUNWAY 19: Climb on heading 187° to 515, then direct FIMBI, cross FIMBI at or above 1500 and at or below 230K, then on track 156° to MCNAB, then on track 156° to AMEEE, cross AMEEE at or above 5000, thence....

TAKEOFF RUNWAY 33: Climb on heading 334° to 515, then direct REVGE, cross REVGE at or above 1500 and at or below 220K, then on track 310° to BEBLE, then on track 338° to COVTO, then on track 344° to ALEEX, then on track 050° to DOGUE, cross DOGUE at or above 4000 and at or below 250K, then on track 107° to GUCER, then on track 174° to AMEEE, cross AMEEE at or above 5000, thence

....on assigned transition. Maintain 5000. Expect clearance to filed altitude within 10 minutes after departure.

COLIN TRANSITION (AMEEE1.COLIN):

SCOOB TRANSITION (AMEEE1.SCOOB):