

AL-9077 (FAA)

NIIXX THREE ARRIVAL (RNAV) Transition Routes

DENVER INTL (DEN)
DENVER, COLORADO

RNAV 1 - DME/DME/IRU or GPS

RADAR required for non-GPS equipped aircraft

See following page
for arrival routes

NIIXX
FL220
FL190

DENVER APP CON

126.55 269.525

D-ATIS ARR

125.6 379.9

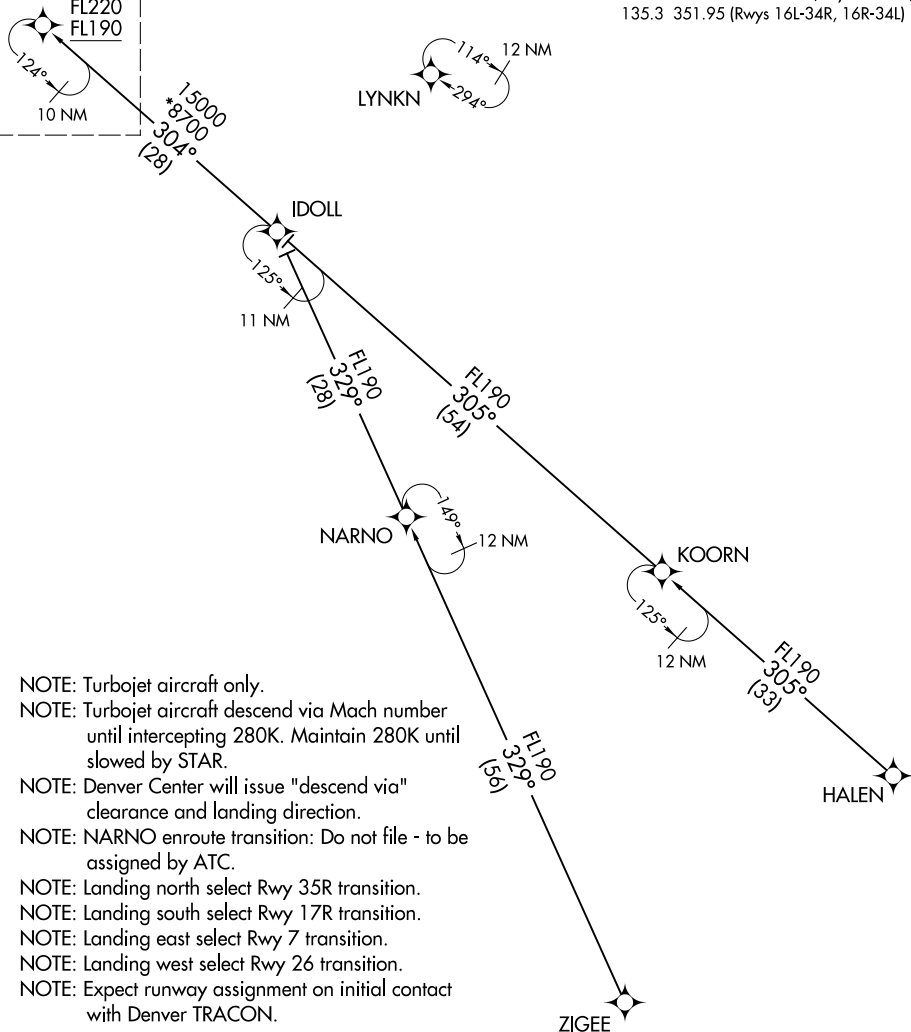
DENVER TOWER

128.75 273.55 (Rwy 7-25)

132.35 239.275 (Rwys 8-26, 17L-35R)

124.3 322.45 (Rwy 17R-35L)

135.3 351.95 (Rwys 16L-34R, 16R-34L)



NOTE: Turbojet aircraft only.

NOTE: Turbojet aircraft descend via Mach number until intercepting 280K. Maintain 280K until slowed by STAR.

NOTE: Denver Center will issue "descend via" clearance and landing direction.

NOTE: NARNO enroute transition: Do not file - to be assigned by ATC.

NOTE: Landing north select Rwy 35R transition.

NOTE: Landing south select Rwy 17R transition.

NOTE: Landing east select Rwy 7 transition.

NOTE: Landing west select Rwy 26 transition.

NOTE: Expect runway assignment on initial contact with Denver TRACON.

HALEN TRANSITION (HALEN.NIIXX3)

NARNO TRANSITION (NARNO.NIIXX3)

ZIGEE TRANSITION (ZIGEE.NIIX3)

(CONTINUED ON FOLLOWING PAGE)

NOTE: Chart not to scale.

NIJXX THREE ARRIVAL (RNAV) Transition Routes

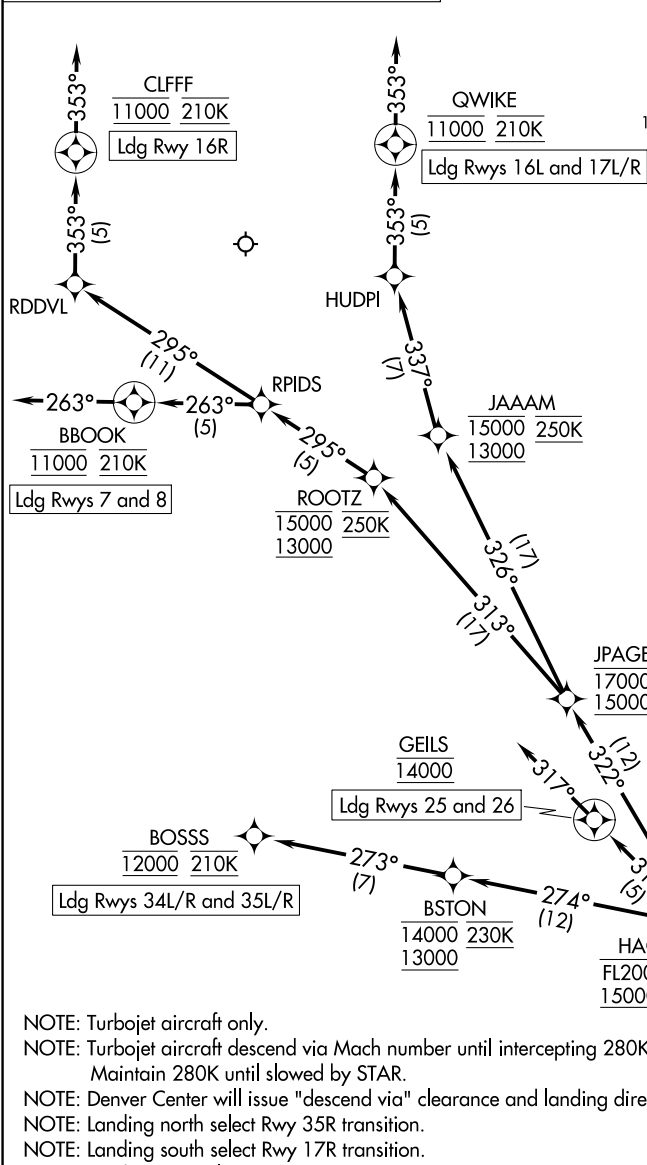
(NIIXX.NIIXX3) 07OCT21

DENVER, COLORADO
DENVER INTL (DEN)

(NIIXX.NIIXX3) 23110

NIIXX THREE ARRIVAL (RNAV) Arrival Routes

RNAV 1 - DME/DME/IRU or GPS
RADAR required for non-GPS equipped aircraft



- NOTE: Turbojet aircraft only.
NOTE: Turbojet aircraft descend via Mach number until intercepting 280K.
Maintain 280K until slowed by STAR.
NOTE: Denver Center will issue "descend via" clearance and landing direction.
NOTE: Landing north select Rwy 35R transition.
NOTE: Landing south select Rwy 17R transition.
NOTE: Landing east select Rwy 7 transition.
NOTE: Landing west select Rwy 26 transition.
NOTE: Expect runway assignment on initial contact with Denver TRACON.

(NARRATIVE ON FOLLOWING PAGE)

DENVER INTL (DEN)
DENVER, COLORADO

DENVER APP CON
126.55 269.525
D-ATIS ARR
125.6 379.9
DENVER TOWER
128.75 273.55 (Rwy 7-25)
132.35 239.275 (Rwys 8-26, 17L-35R)
124.3 322.45 (Rwy 17R-35L)
135.3 351.95 (Rwys 16L-34R, 16R-34L)

NOTE: Chart not to scale.

NIIXX THREE ARRIVAL (RNAV) Arrival Routes

(NIIXX.NIIXX3) 07OCT21

DENVER, COLORADO
DENVER INTL (DEN)

SW-1, 16 MAY 2024 to 13 JUN 2024

SW-1, 16 MAY 2024 to 13 JUN 2024

ARRIVAL ROUTE DESCRIPTION

From NIIXX on track 304° to cross HAGGR between 15000 and FL200 and at 250K.

LANDING RUNWAYS 7, 8: From HAGGR on track 322° to cross JPAGE between 15000 and 17000, then on track 313° to cross ROOTZ between 13000 and 15000 and at 250K, then on track 295° to RPIDS, then on track 263° to cross BBOOK at 11000 and at 210K, then on track 263°. Expect RADAR vectors to final approach course.

LANDING RUNWAYS 16L, 17L/R: From HAGGR on track 322° to cross JPAGE between 15000 and 17000, then on track 326° to cross JAAAM between 13000 and 15000 and at 250K, then on track 337° to HUDPI, then on track 353° to cross QWIKI at 11000 and at 210K, then on track 353°. Expect RADAR vectors to final approach course.

LANDING RUNWAY 16R: From HAGGR on track 322° to cross JPAGE between 15000 and 17000, then on track 313° to cross ROOTZ between 13000 and 15000 and at 250K, then on track 295° to RPIDS, then on track 295° to RDDVL, then on track 353° to cross CLFF at 11000 and at 210K, then on track 353°. Expect RADAR vectors to final approach course.

LANDING RUNWAYS 25, 26: From HAGGR on track 317° to cross GEILS at 14000, then on track 317°. Expect RADAR vectors to final approach course.

LANDING RUNWAYS 34L/R: From HAGGR on track 274° to cross BSTON between 13000 and 14000 and at 230K, then on track 273° to cross BOSSS at 12000 and at 210K. Expect ILS or LOC RWY 34L/R approach.

LANDING RUNWAYS 35L/R: From HAGGR on track 274° to cross BSTON between 13000 and 14000 and at 230K, then on track 273° to cross BOSSS at 12000 and at 210K. Expect ILS or LOC RWY 35L/R approach.

LOST COMMUNICATIONS: In the event of lost communications prior to runway transition assignment, when DEN is landing south, execute the ILS RWY 17R, when DEN is landing north, execute the ILS RWY 35R.

SW-1, 16 MAY 2024 to 13 JUN 2024

SW-1, 16 MAY 2024 to 13 JUN 2024