

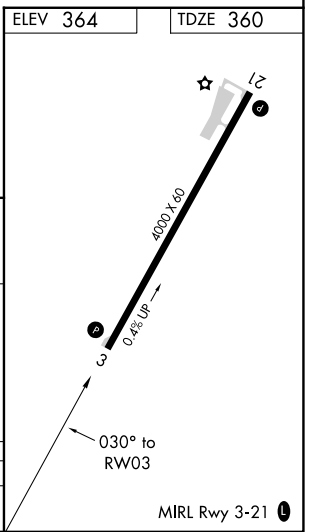
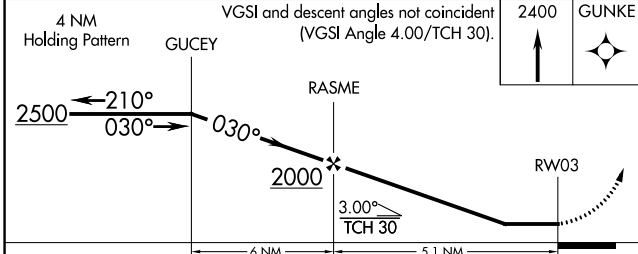
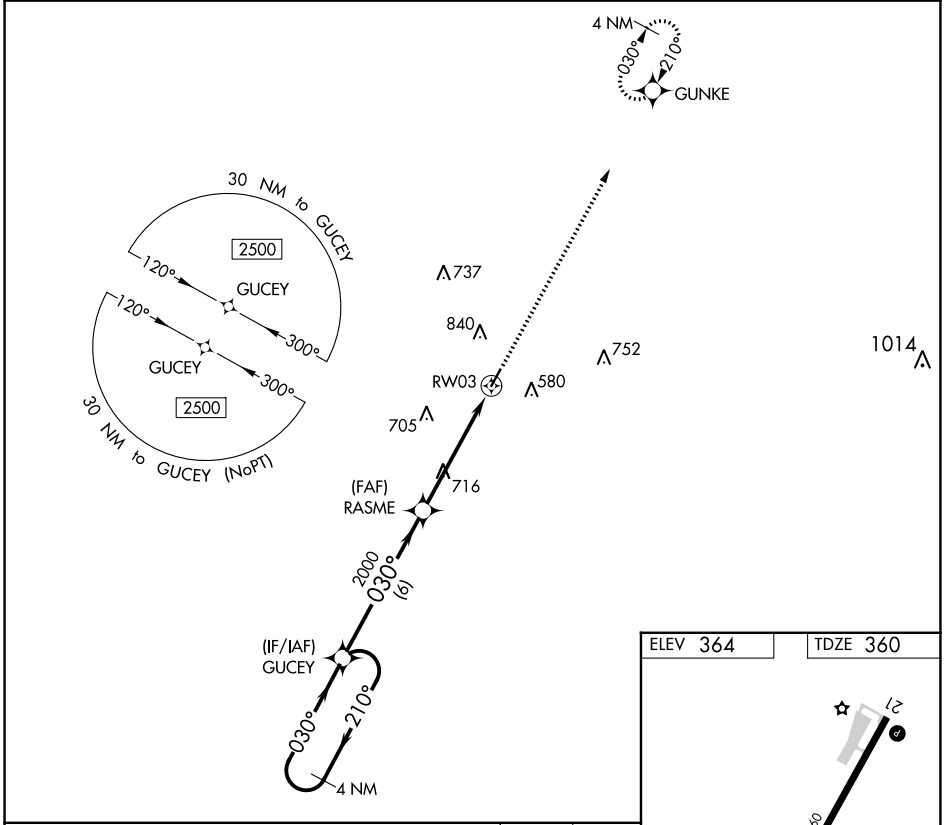
APP CRS	Rwy Idg	4000
030°	TDZE	360
	Apt Elev	364

RNAV (GPS) RWY 3

WINONA-MONTGOMERY COUNTY (5A6)

RNP APCH.	<p>▼ Use Grenada altimeter setting, when not received, use Greenwood altimeter setting.</p> <p>▲ NA Procedure NA at night. Rwy 3 helicopter visibility reduction below 1 SM NA.</p>	MISSED APPROACH: Climb to 2400 direct GUNKE and hold.
-----------	---	---

AWOS-3PT 120.175	GNF AWOS-3PT 118.025	MEMPHIS CENTER 128.5 279.55	CTAF 122.9
----------------------------	--------------------------------	---------------------------------------	----------------------



CATEGORY	A	B	C	D
LNNAV MDA	1040-1	680 (700-1)	1040-2 680 (700-2)	NA

SC-4, 16 MAY 2024 to 13 JUN 2024

SC-4, 16 MAY 2024 to 13 JUN 2024