

**WATERLOO RGNL** (ALO)(KALO) P (ARNG) 4 NW UTC-6(-5DT) N42°33.51' W92°24.06'

**CHICAGO**  
H-5D, L-28F  
IAP, AD

873 B ARFF Index—See Remarks NOTAM FILE ALO

**RWY 12-30:** H8399X150 (ASPH-GRVD) S-55, D-75, 2D-140

PCN 59 R/A/X/T HIRL

**RWY 12:** MALSR. PAPI(P4L)—GA 3.0° TCH 57'. RVR-T Tree.

**RWY 30:** MALS. VASI(V4L)—GA 3.0° TCH 52'. RVR-R

**RWY 18-36:** H6003X150 (ASPH-CONC-GRVD) S-50, D-75

PCN 51 F/B/X/T MIRL

**RWY 18:** REIL. VASI(V4L)—GA 3.0° TCH 42'. Tree.

**RWY 36:** REIL. PAPI(P4L)—GA 3.0° TCH 51'. Tree.

**LAND AND HOLD—SHORT OPERATIONS**

LDG RWY	HOLD—SHORT POINT	AVBL LDG DIST
<b>RWY 30</b>	18-36	4800
<b>RWY 36</b>	12-30	3650

**RUNWAY DECLARED DISTANCE INFORMATION**

**RWY 12:** TORA-8399 TODA-8399 ASDA-8399 LDA-8399

**RWY 18:** TORA-6003 TODA-6003 ASDA-6003 LDA-6003

**RWY 30:** TORA-8399 TODA-8399 ASDA-8399 LDA-8399

**RWY 36:** TORA-6003 TODA-6003 ASDA-6003 LDA-6003

**SERVICE:** S4 FUEL 100LL, JET A OX 1, 2, 3, 4 LGT When ATCT clsd

ACTVT MALSR Rwy 12; MALS Rwy 30; VASI Rwy 18; PAPI Rwy 36;

MIRL Rwys 18-36, and HIRL Rwy 12-30—CTAF. **MILITARY—FUEL**

J4(Mii)—PPR. (NC-100LL, A - O/R 0400-1100Z†, svc fee, C319-291-4483.)

**AIRPORT REMARKS:** Attended 1100-0300Z†. Birds on and in/ov arpt. Arpt sfc conds unmon 0400-1030Z† dly. Fuel avbl on request, fee for service. Class I, ARFF Index A. Clsd to unskd acr opns with more than 10 psgr seats excp 72 hours PPR amgr. Call amgr 319-291-4483. Cell 319-529-1388. ARFF Index B provided. ARFF Index C avbl on 72 hrs req. Air carrier ops over 9 psgr seats not auth over 15 minutes before or after sked arr or dep times excp with prior coord with amgr. When departing all rwys, ends of other rwys not visible. Personnel and equipment performing snow removal ops will monitor CTAF. When ATCT clsd and durg snow events, all arr/dep acct annnc their intrns on CTAF 5 min prior to using the rwys. Rwy 30 is calm wind rwy.

**MILITARY REMARKS:** ARNG ARNG OPS ctc DSN 431-5520, C319-234-1372.

**AIRPORT MANAGER:** 319-291-4483

**WEATHER DATA SOURCES:** ASOS 120.65 (319) 233-8984.

**COMMUNICATIONS:** CTAF 125.075 ATIS 120.65 UNICOM 122.95

RCO 122.05 (FORT DODGE RADIO)

Ⓡ APP/DEP CON 118.9 126.75 (1200-0200Z†)

Ⓡ CHICAGO CENTER APP/DEP CON 118.9 (0200-1200Z†)

TOWER 125.075 (1200-0200Z†) GND CON 121.9

ANG OPS 36.7 142.6 231.55

**CLEARANCE DELIVERY PHONE:** For CD ctc Waterloo ATCT at 319-233-4835. When Waterloo ATCT clsd, for CD ctc Chicago ARTCC at 630-906-8921.

**AIRSPACE:** CLASS D svc 1200-0200Z†; other times CLASS E.

**RADIO AIDS TO NAVIGATION:** NOTAM FILE ALO.

(L) (L) VOR/DME 112.2 ALO Chan 59 N42°33.39' W92°23.94' at fld. 866/0E.

VOR unusable:

017°-062° byd 35 NM blo 2,500'

063°-073° byd 18 NM

074°-356° byd 35 NM blo 2,500'

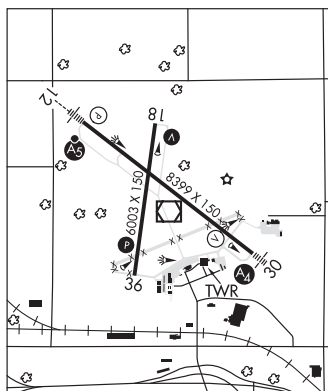
357°-016°

DME unusable:

007°-026° byd 25 NM

027°-006° byd 35 NM blo 2,500'

ILS/DME 111.7 I-ALO Chan 54 Rwy 12. Class IA. Unmonitored when twr clsd.



**WAUKON MUNI** (YØ1) 1 NE UTC-6(-5DT) N43°16.83' W91°28.17'

**CHICAGO**

1281 NOTAM FILE FOD

**RWY 07-25:** H2413X60 (ASPH) RWY LGTS(NSTD) 0.9% up W

**RWY 07:** Sign.

**RWY 25:** Fence.

**SERVICE:** FUEL 100LL LGT NSTD four thld lgts on each end.

**AIRPORT REMARKS:** Unattended.

**AIRPORT MANAGER:** (563) 568-7220

**COMMUNICATIONS:** CTAF 122.9

**CLEARANCE DELIVERY PHONE:** For CD ctc Minneapolis ARTCC at 651-463-5588.

**RADIO AIDS TO NAVIGATION:** NOTAM FILE FOD.

(L) DME 116.6 UKN Chan 113 N43°16.81' W91°32.24' 090° 3.0 NM to fld. 1288.