

COLUMBIA

COLUMBIA METRO (CAE)(KCAE) 5 SW UTC-5(-4DT) N33°56.33' W81°07.17'

236 B LRA Class I, ARFF Index B NOTAM FILE CAE MON Airport

RWY 11-29: H8001X150 (CONC-GRVD) S-72, D-225, 2S-175,

2D-409, 2D/2D2-700 PCN 90 R/B/W/T HIRL CL

RWY 11: ALSF2. TDZL. PAPI(P4L)—GA 3.0° TCH 59'. RVR-TMR

RWY 29: MALSR. PAPI(P4L)—GA 3.0° TCH 57'. RVR-TMR 0.5% up.

RWY 05-23: H8001X150 (ASPH-CONC-GRVD) S-100, D-200, 2S-175,

2D-355, 2D/2D2-675 PCN 87 R/B/W/T HIRL

RWY 05: MALSR. PAPI(P4R)—GA 3.0° TCH 73'. RVR-T 0.4% down.

RWY 23: REIL. PAPI(P4L)—GA 3.0° TCH 69'. RVR-T Thld dsplcd

1000'. Tree.

RUNWAY DECLARED DISTANCE INFORMATION

RWY 05: TORA-8001 TODA-8001 ASDA-7001 LDA-7001

RWY 11: TORA-8601 TODA-8601 ASDA-8601 LDA-8601

RWY 23: TORA-8001 TODA-8001 ASDA-8001 LDA-7001

RWY 29: TORA-8601 TODA-8601 ASDA-8506 LDA-8506

SERVICE: S4 **FUEL** 100LL, JET A **OX** 1, 3 **LGT** Rwy 11 ALSF2 also operates as SSALR.

NOISE: Noise abatement procedure: no turns blo 1000 ft for turbine engine acft unless directed by ATC.

AIRPORT REMARKS: Attended continuously. Acft ldg with explosives obtain PPR from arpt ops 803-822-5050. Rwy 05-23 center 75' is conc, entire length of rwy. Due to proximity and rwy alignment aircrews have mistaken CUB (Rwy 13-31) for CAE (Rwy 11-29) which is 6 miles northeast. Helipad H1 located north of Taxilane E, east of Twy E3. Fee for coml acft over 15,000 lbs. Opr of ultralight veh prohibited. Sports complex with numerous flood lgts aprx 6500' from AER 11. Rwy 05 200' x 200' blast pad. Rwy 11 220' x 400' blast pad, Rwy 29 220' x 400' blast pad.

AIRPORT MANAGER: (803) 822-5017

WEATHER DATA SOURCES: ASOS 120.15 (803) 822-4168. LLWAS.

COMMUNICATIONS: ATIS 120.15 UNICOM 122.95

COLUMBIA RCO 122.1R 114.7T (ANDERSON RADIO)

Ⓡ **COLUMBIA APP/DEP CON** 124.15 (110°-289°) 133.4 (290°-109°)

TOWER 119.5 **GND CON** 121.9 **CLNC DEL** 119.75

AIRSPACE: CLASS C svc ctc **APP CON**.

RADIO AIDS TO NAVIGATION: NOTAM FILE CAE.

(VH) (H) **VORTAC** 114.7 CAE Chan 94 N33°51.44' W81°03.23' 328° 5.9 NM to fld. 404/2W.

VOR unusable:

000°-073° byd 35 NM blo 6,000'

200°-234° byd 12 NM blo 3,000'

235°-245° byd 12 NM blo 6,000'

246°-289° byd 12 NM blo 3,000'

290°-305° byd 12 NM blo 2,400'

306°-344° byd 30 NM

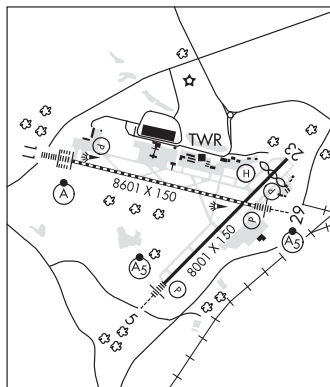
345°-359° byd 10 NM blo 5,000'

ILS 108.95 I-GJC Rwy 05. Class IE.

ILS/DME 110.3 I-CAE Chan 40 Rwy 11. Class IIIE.

ILS 108.3 I-VYK Rwy 29. Class IE.

HELIPAD H1: H50X50 (CONC) PERIMETER LGTS



CHARLOTTE

H-9B, 12G, L-24I

IAP, AD