

**SAN FRANCISCO INTL** (SFO)(KSFO) P (CG) 8 SE UTC-8(-7DT) N37°37.13' W122°22.53'

**SAN FRANCISCO**  
H-3B, L-2F, 3B, A  
IAP, AD

13 B LRA Class I, ARFF Index E NOTAM FILE SFO

**RWY 10L-28R:** H11870X200 (ASPH-GRVD) S-75, D-200, 2D-400,  
2D/2D2-877 PCN 80 F/B/X/T HIRL CL

**RWY 10L:** REIL. PAPI(P4L)—GA 3.0° TCH 80'. RVR-TMR Tower.

**RWY 28R:** ALSF2. TDZL. PAPI(P4L)—GA 3.0° TCH 68'. RVR-TMR Thld  
dsplcd 300'. Rgt tfc.

**RWY 10R-28L:** H11381X200 (ASPH-GRVD) S-75, D-200, 2D-400,  
2D/2D2-877 PCN 80 F/B/X/T HIRL CL

**RWY 10R:** PAPI(P4L)—GA 3.0° TCH 68'. RVR-TMR Tower. Rgt tfc.

**RWY 28L:** MALSR. PAPI(P4L)—GA 2.85° TCH 67'. RVR-TMR Thld  
dsplcd 300'.

**RWY 01R-19L:** H8650X200 (ASPH-GRVD) S-75, D-200, 2D-400,  
2D/2D2-877 PCN 100F/B/X/T HIRL CL

**RWY 01R:** REIL. RVR-TMR Thld dsplcd 560'. Tree.

**RWY 19L:** MALSF. TDZL. PAPI(P4L)—GA 3.0° TCH 71'. RVR-TMR

**RWY 01L-19R:** H7650X200 (ASPH-GRVD) S-75, D-200, 2D-400,  
2D/2D2-877 PCN 90 F/B/X/T HIRL CL

**RWY 01L:** REIL. RVR-TMR Thld dsplcd 640'.

**RWY 19R:** PAPI(P4L)—GA 3.15° TCH 58'. RVR-TMR

**RUNWAY DECLARED DISTANCE INFORMATION**

**RWY 01L:**TORA-7650 TODA-7650 ASDA-7650 LDA-7010

**RWY 01R:**TORA-8650 TODA-8650 ASDA-8650 LDA-8090

**RWY 10L:**TORA-11870 TODA-11870 ASDA-11193 LDA-11193

**RWY 10R:**TORA-11381 TODA-11381 ASDA-10704 LDA-10704

**RWY 19L:**TORA-8650 TODA-8650 ASDA-8650 LDA-8650

**RWY 19R:**TORA-7650 TODA-7650 ASDA-7650 LDA-7650

**RWY 28L:**TORA-11381 TODA-11381 ASDA-10981 LDA-10275

**RWY 28R:**TORA-11870 TODA-11870 ASDA-11870 LDA-11236

**ARRESTING GEAR/SYSTEM**

**RWY 01L:** EMAS

**RWY 01R:** EMAS

**RWY 19L:** EMAS

**RWY 19R:** EMAS

**SERVICE:** FUEL 100LL, JET A, A++ OX3, 4 MILITARY— A-GEAR Rwy 01L EMAS 413 x 227, Rwy 19R EMAS 437 x 227,  
Rwy 01R EMAS 409 x 227, Rwy 19L EMAS 373 x 227. FUEL (100LL, A).

**NOISE:** Noise sensitive arpt. For noise abatement procedures ctc arpt noise office Monday-Friday 1600-0100Z by calling  
650-821-5100. NOTE: See Special Notices—Special Noise Abatement Procedures—Preferential Runways.

**AIRPORT REMARKS:** Attended continuously. Rwy 1L CLOSED to departing Trijet acft with wingspan greater than 155'. PAEW  
AER 28L, Rwy 28R and Rwy 19L indef. Flocks of birds feeding along shoreline adjacent to arpt, on occasions fly across  
various parts of arpt. Due to obstructed vision, SFO twr is able to provide only limited arpt tfc ctl svc on Twy A between  
gates 88 and 89. Twr personnel are unable to determine whether this area is clear of tfc or obstructions. Due to obstd  
vision, the twr is una to dtfrm if acft pulling into gate F11 are at the hook-up spot or in the gate. Rwy 10 preferred rwy  
between 0900-1400Z wx and fit conditions permitting. ASSC in use. Operate transponders with altitude reporting mode  
and ADS-B (if equipped) enabled on all airport surfaces. Simultaneous ops in effect all rwys. Airline pilots shall strictly  
follow the painted nose gear lines and no oversteering adjustment is permitted. All oudb Twy Zulu 2 heavy acft with a  
wingspan of 171 ft or gtr under pwr prohibited from entering wb Twy Zulu. Twy S btn Twy Z and Twy S2 clsd to acft with  
wingspan over 215 ft. Rwy status lgts in operation. Ldg fee. Flight Notification Service (ADCUS) available. NOTE: See  
Special Notices—Special Noise Abatement Procedures—Preferential Runways.

**AIRPORT MANAGER:** (650) 821-3355

**WEATHER DATA SOURCES:** ASOS (650) 827-8593 LLWAS.

**COMMUNICATIONS:** D-ATIS 118.85 115.8 113.7 650-877-3585/8422 UNICOM 122.95

Ⓡ NORCAL APP CON 120.9 135.1 128.325

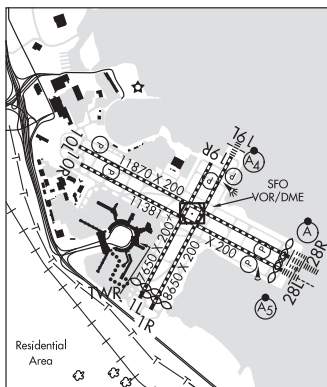
TOWER 120.5 GND CON 121.8 CLNC DEL 118.2 PRE TAXI CLNC 118.2

Ⓡ NORCAL DEP CON 128.325 133.95 134.5 135.1 (SE-W) 120.9 (NW-E)

CPDLC (LOGON KUSA)

PDC

**AIRSPACE:** CLASS B See VFR Terminal Area Chart.



CONTINUED ON NEXT PAGE

## CONTINUED FROM PRECEDING PAGE

VOR TEST FACILITY (VOT) 111.0

RADIO AIDS TO NAVIGATION: NOTAM FILE SFO.

(VL) (L) VOR/DME 115.8 SFO Chan 105 N37°37.17' W122°22.43' at fld. 6/17E.

VOR unusable:

025°-065° byd 30 NM blo 18,000'  
 035°-055° byd 12 NM blo 6,500'  
 121°-281° byd 40 NM  
 135°-260° byd 10 NM blo 4,500'  
 260°-295° byd 35 NM blo 3,000'  
 282°-292° byd 40 NM blo 6,000'  
 282°-292° byd 46 NM  
 293°-336° byd 40 NM  
 295°-330° byd 20 NM blo 8,000'  
 337°-348° byd 40 NM blo 8,000'  
 337°-348° byd 80 NM  
 355°-102° byd 40 NM

DME unusable:

025°-065° byd 30 NM blo 18,000'  
 035°-055° byd 12 NM blo 6,500'  
 150°-190° byd 25 NM blo 4,500'  
 190°-260° byd 10 NM blo 4,500'  
 260°-295° byd 35 NM blo 3,000'  
 295°-330° byd 20 NM blo 8,000'

ILS/DME 108.9 I-SIA Chan 26 Rwy 19L. Class IE. Ry 19L glideslope deviations are possible when critical areas are not required to be protected. Acft operating invof glideslope transmitter. Pilots should be alert for momentary localizer course excursions due to LARGE aircraft operating in vicinity of localizer antenna.

ILS/DME 109.55 I-SFO Chan 32(Y) Rwy 28L. Class IIE.

ILS/DME 111.7 I-GWQ Chan 54 Rwy 28R. Class IIIE.

---

**SAN GABRIEL VALLEY** (See EL MONTE on page 151)

---