

**GRAND JUNCTION RGNL** (GJT)(KGJT) 3 NE UTC-7(-6DT) N39°07.35' W108°31.61'

DENVER

4861 B Class I, ARFF Index B NOTAM FILE GJT

H-3E, L-9D

**RWY 11-29:** H10503X150 (ASPH-GRVD) S-110, D-180, 2S-175, 2D-260 PCN 57 F/C/X/T HIRL

IAP, AD

**RWY 11:** MALSR. PAPI(P4L)—GA 3.0° TCH 51'. RVR-T 0.4% up.**RWY 29:** REIL. VASI(V4L)—GA 3.0° TCH 51'. RVR-R 0.3% down.**RWY 04-22:** H5501X75 (ASPH-GRVD) S-26, D-26 MIRL 1.3% up NE**RWY 04:** REIL. PAPI(P4L)—GA 3.0° TCH 41'.**RWY 22:** REIL.**RUNWAY DECLARED DISTANCE INFORMATION****RWY 04:** TORA-5501 TODA-5501 ASDA-5501 LDA-5501**RWY 11:** TORA-10503 TODA-10503 ASDA-10503 LDA-10503**RWY 22:** TORA-5501 TODA-5501 ASDA-5501 LDA-5501**RWY 29:** TORA-10503 TODA-10503 ASDA-10503 LDA-10503**SERVICE:** S4 **FUEL** 100LL, JET A **OX** 1, 3 **LGT** When ATCT clsd ACTVT MALSR Rwy 11; HIRL Rwy 11-29; twy lights—CTAF. REIL Rwy 29; PAPI Rwy 11; VASI Rwy 29 on consly. REIL Rwy 04 and 22; PAPI Rwy 04; MIRL Rwy 04-22 on consly durg ATCT oper hrs and off when ATCT clsd.**NOISE:** Noise abatement procedures in efct, ctc arpt mgmt for details at 970-244-9100.**AIRPORT REMARKS:** Attended 1230-0700++. Conditions not monitored 0700-1230Z± except by PPR. For fuel after hrs call 970-243-7500. Flocks of birds on and infov arpt. Rwy 04-22 CLOSED from 0500-1300Z±. Arpt ops number is 970-260-7164. Please call for any NOTAMS or concerns. ARFF provided only during scheduled Part 121 air carrier ops except by PPR, call arpt manager for details at 970-244-9100. Liquid oxy svc avbl. Twy C1 clsd. Twy C1A and Twy C, 150 ft either side of the intxn not vsbl fm twr. Hel prkg avbl at FBO; PPR rcmdd.**WEATHER DATA SOURCES:** ASOS 118.55 (970) 245-7881.**COMMUNICATIONS:** CTAF 118.1 ATIS 118.55 UNICOM 122.95

RCO 122.6 (DENVER RADIO)

DOUGLAS CREEK RCO 122.4 (DENVER RADIO)

Ⓡ DENVER APP/DEP CON 119.7 (1300-0500Z±)

Ⓡ DENVER CENTER APP/DEP CON 134.5 (0500-1300Z±)

TOWER 118.1 (1300-0500Z±) GND CON 121.7

VFR ADVSY SVC ctc TOWER

**AIRSPACE:** CLASS D svc 1300-0500Z±; other times CLASS E.**RADIO AIDS TO NAVIGATION:** NOTAM FILE DEN.

(VH) (DH) VORV/DME 112.4 JNC Chan 71 N39°03.57' W108°47.55' 058° 13.0 NM to fld. 7100/15E.

DME unusable:

125°-135° byd 33 NM blo 12,000'

136°-176° byd 33 NM blo 14,000'

VOR unusable:

070°-076° byd 40 NM

077°-087° byd 40 NM blo 15,000'

077°-087° byd 66 NM

088°-092° byd 40 NM

093°-103° byd 40 NM blo 13,000'

093°-103° byd 51 NM

104°-124° byd 40 NM

125°-135° byd 33 NM blo 12,000'

125°-135° byd 47 NM

136°-145° byd 40 NM

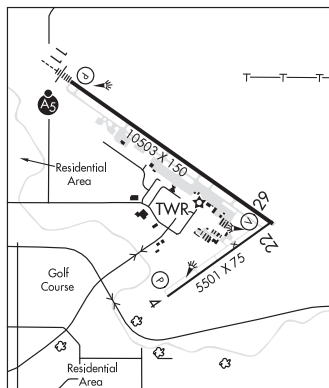
146°-156° byd 40 NM blo 15,000'

146°-156° byd 57 NM

157°-205° byd 40 NM

ILS/DME 110.3 I-GJT Chan 40 Rwy 11. Class ID.

LDA/DME 109.7 I-ACD Chan 34 Rwy 29. Rwy 29 LDA/DME auto cpd apch inside 2 NM NA.

**COMM/NAV/WEATHER REMARKS:** Emerg frequency 121.5 not avbl at twr. CD FONE: When twr clsd, ctc Grand Junction apch 303-342-1916. IFUN, ctc Denver ARTCC 303-342-4257.**GRAND MESA** N39°05.30' W108°13.24'

DENVER

RCO 122.2 (DENVER RADIO)

L-9E