

CHENA RIVER SPB (ZT5) 3 W UTC-9(-8DT) N64°49.97' W147°50.90'

FAIRBANKS

440 TPA—1000(560) NOTAM FILE FAI

WATERWAY N-S: 5000X300 (WATER)

WATERWAY E-W: 3000X300 (WATER)

SEAPLANE REMARKS: Unattended. Operating area in Chena River north and west of Fairbanks Intl arpt. PVT 900' X 50' grass strip adjacent river. All property along river bank is privately owned. Public access to river consists of one small gravel ramp. Public access ramp is at north end of Ravenwood Ave. N64-49.9' W147-52.5'

COMMUNICATIONS: CTAF 122.9

COMM/NAV/WEATHER REMARKS: For a toll free call to Fairbanks FSS dial 1-866-248-6516, for local call to Fairbanks FSS dial 907-474-0137.

FAIRBANKS INTL (FAI)(PAFA) 3 SW UTC-9(-8DT) N64°48.92' W147°51.40'

FAIRBANKS

439 B LRA Class I, ARFF Index C NOTAM FILE FAI

H-1B, 2K, L-3A, 3D, 4J

RWY 02L-20R: H11800X150 (ASPH-GRVD) S-75, D-220, 2D-580, 2D/2D2-1100 PCN 78 F/A/W/T HIRL CL

IAP, DIAP, AD

RWY 02L: ALSF2. TDZL. PAPI(P4L)—GA 3.0° TCH 73'. RVR-TMR Thld dspcd 750'. Tree.

RWY 20R: MALSR. PAPI(P4L)—GA 3.0° TCH 74'. RVR-TMR Thld dspcd 750'. Tree.

RWY 02R-20L: H4510X75 (ASPH) MIRL

RWY 02R: PAPI(P4L)—GA 3.0° TCH 40'. Trees. Rgt tfc.

RWY 20L: REIL. PAPI(P4L)—GA 3.0° TCH 42'.

RWY 02-20: 2900X75 (GRVL)

RUNWAY DECLARED DISTANCE INFORMATION

RWY 02L:TORA-11800 TODA-12800 ASDA-11800 LDA-11050

RWY 20R:TORA-11800 TODA-12800 ASDA-11800 LDA-11050

SERVICE: S4 FUEL 100LL, JET A1 OX 1, 2 LGT Rwy 20R PAPI unusable byd 8° right of centerline.

NOISE: Noise abatement procedures in effect fm 0700-1700Z† all large acft, turbine engine, and heavy acft utilize Rwy 02L for arrivals and Rwy 20R for departures when wind is not an opr factor. Ctc arpt ops for engine run-up locations.

AIRPORT REMARKS: Attended continuously. See additional pages under notices for TRSA and Fairbanks area information. N/S twy (Twy A) is west and parallel to Rwy 02L-20R. Be alert to avoid ldg on twy. Transient parking east ramp for acft with wingspan less than 79 ft. No transient acft parking on west ramp, ctc arpt ops 907-451-2300 for info and Medivac parking. Be alert for snow removal equipment ops from 1 Oct to 15 May. Migratory birds in vicinity of arpt during Spring thru Fall. For avblty of summer gravel strip Rwy 02-20 and winter ski strip Rwy 02-20 consult local NOTAMS and ctc twr prior to arrival/departure. For transient helicopter parking call arpt ops 907-451-2300. Tfc pat alt (single engine reciprocating acft) 1500' MSL. Tfc pat alt (all multi-engine, large and turbine-powered acft) 2000' MSL. Cold temperature airport. Altitude correction required at or below -32C. All rwy hold lines obscured October 1 thru April 1. Rwy 02R-20L is limited for use by acft design Group B II, acft or smaller. Rwy 02R-20L & Rwy grvl/ski 02-20 not avbl for scheduled or unscheduled acr opns with more than 30 psgr seats. Rwy 02-20 gravel strip for summer and ski strip/winter use. PPR for mil acft utilizing heavy cargo or trml apn, ctc arpt ops. Twy B security gate between Rwy 02L-20R and Twy Charlie key 121.75 5 times to activate. If Twy B gate inoperative, wait 30 seconds to reset and try again. If unsuccessful, notify FAI ops, 907-451-2300. Compass rose not calibrated.

AIRPORT MANAGER: 907-474-2500

WEATHER DATA SOURCES: ASOS 124.4 (907) 474-8036. (WX CAM)

COMMUNICATIONS: SFA ATIS 124.4 907-456-1244 (TIE-IN FSS FAIRBANKS FAI-NOTAM FAI)

RADIO 122.2 124.1 132.65 (E)

Ⓡ **APP CON** 125.35 363.2 (180°-359°) 127.1 251.1 (360°-179°) 119.85 (E)

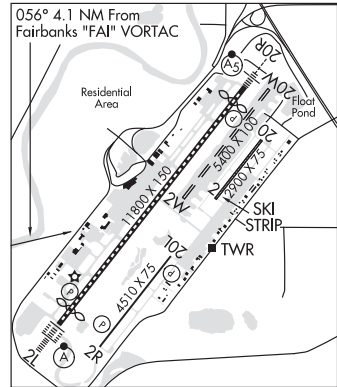
TOWER 118.3 257.8 (E) **GND CON** 121.9 **CLNC DEL** 127.6

Ⓡ **DEP CON** 125.35 363.2 (180°-359°) 127.1 251.1 (360°-179°) 327.1 (E)

SUANS (Eielson Range Control) 125.3.

AIRSPACE: CLASS D.

TRSA svc ctc **APP CON**



CONTINUED ON NEXT PAGE

