

**UNALAKLEET** (UNK)(PAUN) 1 N UTC-9(-8DT) N63°53.31' W160°47.95'

27 B NOTAM FILE UNK

**RWY 15-33:** H5900X150 (ASPH-GRVD) HIRL**RWY 15:** REIL. VASI(V4L)—GA 3.0° TCH 39'. Road. Rgt tfc.**RWY 33:** REIL. VASI(V4L)—GA 3.0° TCH 48'. Bldg.**RWY 09-27:** H1900X75 (ASPH-GRVD) PCN 59 F/B/X/T MIRL**RWY 27:** Bridge.**SERVICE:** FUEL 100LL, JET A LGT ACTVT REIL Rwy 15 and Rwy 33; HIRL Rwy 15-33; MIRL Rwy 09-27—CTAF. VASI Rwy 15 and 33 on consly.**AIRPORT REMARKS:** Attended Mon-Fri 1700-0100Z $\ddagger$ . 299 ft twr 2.4 NM E. Snow removal and de-icing NA 0100-1700Z $\ddagger$ . Rwy cond unmnt; rcmd visual insp prior to lndg. Airframe rprs emerg only. Pwr plant rprs emerg only. Tsnt prkg near DOT maint bldg and Rwy 27 thr. Rwy 15 100 ft unlgt twr 0.4 NM N of thr.**AIRPORT MANAGER:** 907-625-1025**WEATHER DATA SOURCES:** AWOS-3P 132.25 (907) 624-3051. (WX CAM)**COMMUNICATIONS:** CTAF 123.0**UNALAKLEET RCO** 122.3(NOME RADIO)**ANCHORAGE CENTER APP/DEP CON** 135.7 335.5**AIRSPACE:** CLASS E svc 1500-0400Z $\ddagger$ ; other times CLASS G.**RADIO AIDS TO NAVIGATION:** NOTAM FILE UNK.

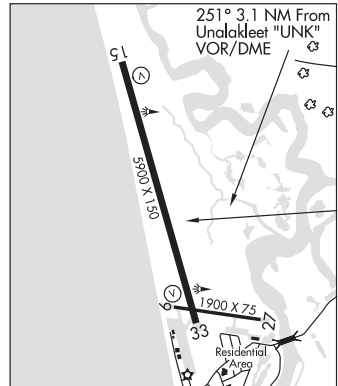
(H) (H) VOR/DME 116.9 UNK Chan 116 N63°53.52' W160°41.06' 251° 3.1 NM to fld. 436/15E.

**NORTH RIVER NDB (HW)** 382 JNR N63°54.46' W160°48.71' 153° 1.2 NM to fld. 14/11E.**LOC/DME** 111.3 I-UNK Chan 50 Rwy 15.**COMM/NAV/WEATHER REMARKS:** For a toll free call to Nome FSS dial 1-800-478-8400. For a toll free call to Fairbanks FSS dial 1-866-248-6516.

MC GRATH

H-1A, H-2I, L-3C

IAP

**UNALASKA** (DUT)(PADU) 1 N UTC-9(-8DT) N53°53.94' W166°32.70'

23 B TPA-2101(2078) LRA ARFF Index—See Remarks NOTAM FILE DUT

**RWY 13-31:** H4500X100 (ASPH-GRVD) S-60, 2D-210

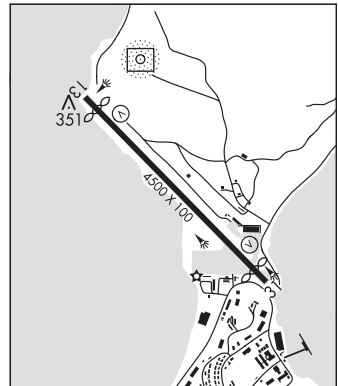
PCN 86 F/B/X/T MIRL

**RWY 13:** REIL. VASI(V4L)—GA 3.0° TCH 38'. Thld dspcld 300'. Boat.**RWY 31:** REIL. VASI(V4R)—GA 3.0° TCH 32'. Thld dspcld 300'. Boat. Rgt tfc.**RUNWAY DECLARED DISTANCE INFORMATION****RWY 13:** TORA-4337 TODA-4500 ASDA-4200 LDA-3900**RWY 31:** TORA-4500 TODA-4500 ASDA-4200 LDA-3900**SERVICE:** FUEL JET A LGT For REIL Rwy 13 and 31; MIRL Rwy 13-31—stop lgt for veh tfc crossing Rwy 31 thr; key 122.6—7 times for on; 3 times for stop lgt and REIL off. VASI Rwy 13 and 31 oper continuously. VASI Rwy 31 usable distance is 1.4 miles due to mountain. VASI right side of rwy skewed 5 deg south of rwy heading.**AIRPORT REMARKS:** Attended 1700-0130Z $\ddagger$ . Class I, ARFF Index A. CLOSED to air carrier ops with more than 30 pax seats exc PPR in writing to arpt mgr P.O. Box 920525, Dutch Harbor, AK 99692. ARFF eqpt staffed only during periods of large air carrier ops. Arpt maint duty hrs 1700-0130Z $\ddagger$  Mon thru Sun. Arpt hazard reporting only performed during attendance duty hours and for over 30 passenger seat acft. Snow removal and deicing of rwy, twy and ramps only performed during attendance duty hrs. Tfc pattern around mountain. Tran acft must park on Ramp B. Be Alert: Vessel traffic within 1500 ft fm Rwy 13. Be Alert: Vessel fueling dock within 1300 ft from Rwy 31. Arpt area subject to moderate to extreme concentrations of birds. Do not perform locked wheel turns on Rwy 13-31. Personnel and equipment may be working on the rwy at any time. Jet blast area AER 31 clsd to taxiing acft exc when road vehicle and pedestrian tfc is ctdld by oprs representative. Clockwise turn requested. For seaplane gate opr key 122.8, 7 times to open, 3 times to close, gate closes automatically after 5 minutes. See Section "C" notices for gate ctl procedure.**AIRPORT MANAGER:** 907-581-1786**WEATHER DATA SOURCES:** AWOS-3P 125.8 (907) 581-2803. (WX CAM)**COMMUNICATIONS:** CTAF 122.6

DUTCH HARBOR

H-2I, L-2J

IAP



CONTINUED ON NEXT PAGE

## CONTINUED FROM PRECEDING PAGE

RCO 122.6 (COLD BAY RADIO)

① ANCHORAGE CENTER APP/DEP CON 121.4

RADIO AIDS TO NAVIGATION: NOTAM FILE DUT.

DUTCH HARBOR NDB/DME (HW) 283 DUT Chan 86 N53°54.31' W166°32.87' at fld. 272/9E.

DME portion unusable:

005°-080°

081°-330° byd 13 NM

331°-004° byd 15 NM

COMM/NAV/WEATHER REMARKS: For a toll free call to Cold Bay FSS dial 1-800-478-7250. For a toll free call to Kenai FSS dial 1-866-864-1737. Wx information avbl on 129.5 (call sign Dutch WX) or ph: 907-581-1256, 1645-0345Z. Cold Bay FSS oprs 1700-0300Z, all otr times Kenai FSS.

## UPPER WASILLA LAKE SPB (See WASILLA on page 257)

UTOPIA CREEK N65°59.71' W153°41.63' NOTAM FILE UTO.

FAIRBANKS

NDB/DME (HW) 272 UTO Chan 22(Y) 264° 14.2 NM to Hughes. 983/17E.

L-41

NDB unusable:

210°-240°

340°-355°

NDB/DME unusable:

45-105 byd 25 NM

105-45

## UTQIAGVIK

WILEY POST-WILL ROGERS MEML (BRW)(PABR) 0 SE UTC-9(-8DT) N71°17.09' W156°46.12' POINT BARROW

49 B ARFF Index—See Remarks NOTAM FILE BRW

H-1A, L-41

RWY 08-26: H7100X150 (ASPH-GRVD) S-75, D-160, 2D-300

IAP

PCN 43 F/A/X/U HIRL

RWY 08: MALSR. PAPI(P4R)—GA 3.0° TCH 51'. RVR-T Thld dsplcd 600'. Rgt tfc.

RWY 26: REIL. PAPI(P4L)—GA 3.0° TCH 50'. RVR-R Thld dsplcd 600'. Antenna.

## RUNWAY DECLARED DISTANCE INFORMATION

RWY 08: TORA-7100 TODA-7100 ASDA-6500 LDA-5900

RWY 26: TORA-7100 TODA-7100 ASDA-6500 LDA-5900

SERVICE: S2 FUEL 100LL, JET A1 LGT ACTVT MALSR Rwy 08; REIL Rwy 26—CTAF. HIRL Rwy 08-26 preset low instst—incr instst BRW FSS 1500-0700Z; aft hr—CTAF. PAPI Rwy 08 & 26 on consly. Rotg bcn on consly.

AIRPORT REMARKS: Attended 1500-0530Z. Waterfowl invof arpt

Spring-Fall. Class I, ARFF Index B. Clsd to acr ops more than 30 pax seats excp PPR in writing - Airport Manager P. O. Box 367 Barrow, AK 99723. Rcmd lgr acft use elephant ear to turn around. Main ramp bld non std wingtip clnc; rwy back taxi when lgr acft prkd on main ramp. Snow removal, wildlife ctl, cond rptg & arpt maint svc avbl durg maint duty hr 1500-0530Z; aft hr—AMGR. Arpt sand lgr gradation than FAA rcmd/see AC150/5200-30. TSA reg arpt; See 49 CFR 1542. Gates & doors must be secured at all times. Tsnt - AMGR or BRW FSS for info. NOTE: See Notices—Drone Activity at Coastal Airport Launch Sites.

AIRPORT MANAGER: 907-852-5851

WEATHER DATA SOURCES: ASOS 132.150 (907) 852-3112. (WX CAM)

COMMUNICATIONS: CTAF 123.6 AFIS 132.15 (1500-0700Z); OT ctc Fairbanks FSS)

FSS BRW (BARROW) 1500-0700Z; OT ctc Fairbanks FSS.

BARROW RADIO 121.5 122.2 122.6 123.6 (LAA 123.6)

ANCHORAGE CENTER APP/DEP CON 135.3

AIRSPACE: CLASS E svc continuous.

RADIO AIDS TO NAVIGATION: NOTAM FILE UTO.

ILS/DME 110.5 I-BRW Chan 42 Rwy 08. Class IE. Localizer backcourse unusable 2.2 DME abv 2,050' and at 1.0 DME abv 1,050'. Autopilot coupled apchs not applicable blw 290' MSL.

COMM/NAV/WEATHER REMARKS: For local call to Barrow FSS call 907-852-2511. For a toll free call to Fairbanks FSS call 1-866-248-6516. WSO 907-852-6484. AFIS operd by BRW FSS when open, OT Fairbanks FSS.

