

**CAMPBELL AIRSTRIP** (CSR) PVT 4 SE UTC-9(-8DT) N61°09.52' W149°46.84'

ANCHORAGE

286 NOTAM FILE Not insp.

H-1B, 2K, L-1A, 3D, 4G

**RWY 02-20:** 5000X150 (GRVL)

**RWY 02:** Trees. Rgt tfc.

**RWY 20:** Trees.

**AIRPORT REMARKS:** Unattended. Parachute Jumping. Use permitted only with prior permission of BLM Anchorage field manager 267-1246, arpt manager 907-267-1357. All traffic patterns SE of fld. No winter maintenance. Rwy cond not monitored, recommend visual inspection prior to ldg. Drone use to 400' AGL.

**AIRPORT MANAGER:** (907) 267-1357

**COMMUNICATIONS:** CTAF 122.9

**RADIO AIDS TO NAVIGATION:** NOTAM FILE ANC.

**ANCHORAGE (H) (H) VOR/DME** 113.15 TED Chan 78(Y)

N61°10.07' W149°57.61' 078° 5.2 NM to fld. 92/18E.

VOR unusable:

041°-091° byd 25 NM blo 15,000'

091°-096° byd 20 NM blo 15,000'

096°-121° byd 25 NM blo 12,500'

121°-146° byd 25 NM blo 9,000'

DME unusable:

041°-091° byd 25 NM blo 15,000'

091°-096° byd 20 NM blo 15,000'

096°-121° byd 25 NM blo 12,500'

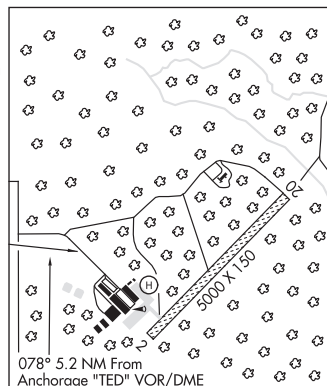
121°-146° byd 25 NM blo 9,000'

196°-206° byd 25 NM blo 3,500'

206°-211° byd 25 NM blo 4,000'

211°-221° byd 25 NM blo 3,500'

**COMM/NAV/WEATHER REMARKS:** For a toll free call to Kenai FSS dial 1-866-864-1737.



**CAMPBELL LAKE SPB** (A11) 3 SW UTC-9(-8DT) N61°07.98' W149°56.51'

ANCHORAGE

20 NOTAM FILE A11

**WATERWAY 06W-24W:** 4000X200 (WATER)

**WATERWAY 06W:** Rgt tfc.

**SEAPLANE REMARKS:** Unattended. Wind indicator: 3—pvtly maintained windsocks around the lake. Preplanned pattern to the west, unless SE wind dictates E apch/dep. No service to transient acft.

**AIRPORT MANAGER:** 907-269-8503

**COMMUNICATIONS:** CTAF 122.9

® **ANCHORAGE APP/DEP CON** 118.6 119.1 123.8 126.4