

CHIGNIK LAKE (A79) 0 WSW UTC-9(-8DT) N56°15.33' W158°46.67'

COLD BAY

50 NOTAM FILE ENA

RWY 08-26: 2800X60 (GRVL) 0.3% up E

RWY 08: Brush.

RWY 26: Brush.

AIRPORT REMARKS: Unattended. Rwy condition not monitored, recommend visual inspection prior to use. Rwy safety areas rough, rutted, and uneven. Rwy slopes down toward the west. Hill South of Rwy 08-26 150' high, runs parallel to rwy. Rwy 08-26 rutted and uneven sfc with no crown, entire length, loose rocks up to 4" on sfc. Rwy 08-26 brush up to 15' along entire rwy length.

AIRPORT MANAGER: 907-246-3325

COMMUNICATIONS: CTAF 122.8

RADIO AIDS TO NAVIGATION: NOTAM FILE PTH.

PORT HEIDEN NDB/DME (HW) 371 PDN Chan 32 N56°57.26'

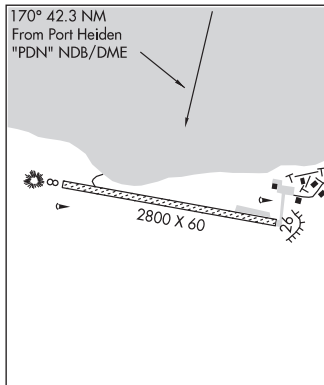
W158°38.85' 170° 42.2 NM to fld. 56/16E.

DME unusable:

050°-110° byd 32 NM blo 6,500'

COMM/NAV/WEATHER REMARKS: For a toll free call to Kenai FSS dial

1-866-864-1737.



CHINOOK N58°44.23' W156°46.70' NOTAM FILE AKN.

KODIAK

NDB (HW) 355 AUB 121° 5.5 NM to King Salmon. 66/11E.

H-1B, 2J, L-2J, 3C

CHISANA (CZN) 0 N UTC-9(-8DT) N62°04.31' W142°02.96'

3348 NOTAM FILE ORT

ANCHORAGE

RWY 12-30: 3000X50 (TURF-GRVL) 2.5% up SE

RWY 12: Trees.

RWY 30: Trees.

AIRPORT REMARKS: Unattended. Wildlife invof rwy. Rwy condition unmt; rcmdnd visual insp prior to lndg. Vehicle trail on W side of rwy. Skis only winter. Alert: two pvt airstrips perpendicular to Rwy 12 and Rwy 30 apch. Rwy 12-30 surface has 24" in brush, 5" in loose rock, ruts and depressions. Rwy 12 and 30 thr and edge cones. Windssock psbly unreliable due to trees.

AIRPORT MANAGER: 907-822-3222

COMMUNICATIONS: CTAF 122.9

RADIO AIDS TO NAVIGATION: NOTAM FILE ORT.

NORTHWAY (H) (H) VORTACW 116.3 ORT Chan 110 N62°56.83'

W141°54.76' 160° 52.8 NM to fld. 1779/24E.

TACAN AZIMUTH unusable:

335°-030° byd 30 NM blo 10,500'

DME unusable:

335°-030° byd 30 NM blo 10,500'

COMM/NAV/WEATHER REMARKS: Northway FSS toll free number

1-800-478-6611. For a toll free call to Fairbanks FSS dial

1-866-248-6516.

