

**CIRCLE HOT SPRINGS** (CHP) 1 E UTC-9(-8DT) N65°29.15' W144°36.70'

DAWSON

870 NOTAM FILE FAI

L-4J

RWY 09-27: 3669X80 (GRVL) 1.1% up E

RWY 09: Brush.

RWY 27: Brush.

**AIRPORT REMARKS:** Unattended. Rwy not maintained and condition not monitored, recommend visual inspection prior to landing. No snow removal. Retardant acct may be operating from arpt in summer.

**AIRPORT MANAGER:** 907-451-5280**COMMUNICATIONS:** CTAF 122.8

SUAS 125.3 126.3 (1-800-758-8723).

**RADIO AIDS TO NAVIGATION:** NOTAM FILE FYU.

**FORT YUKON (H) VORTACW** 114.4 FYU Chan 91 N66°34.46'  
W145°16.60' 146° 67.5 NM to fld. 449/20E.

VOR unusable:

001°-360° byd 15 NM

249°-259° byd 10 NM blo 4,900'

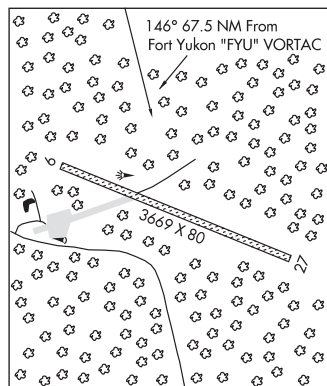
TACAN AZIMUTH unusable:

280°-300° byd 35 NM blo 2,500'

DME unusable:

280°-300° byd 35 NM blo 2,500'

**COMM/NAV/WEATHER REMARKS:** For a toll free call to Fairbanks FSS dial  
1-866-864-1737.

**CLAM COVE** N55°20.53' W131°41.45' NOTAM FILE KTN.

KETCHIKAN

NDB (HW) 396 CMJ 295° 1.0 NM to Ketchikan Intl. 46/21E.

L-1C

NDB unusable:

Byd 15 NM

**CLARK BAY SPB** (See HOLLIS on page 122)**CLARKS POINT** (CLP)(PFCL) 1 E UTC-9(-8DT) N58°50.02' W158°31.76'

KODIAK

80 B NOTAM FILE CLP

L-2I, 3C

RWY 18-36: 3200X60 (GRVL) MIRL

IAP

**SERVICE:** LGT ACTIVATE MIRL Rwy 18-36, windsock; and rot  
bcn—CTAF.

**AIRPORT REMARKS:** Unattended. Birds and moose invof rwy. Rwy condition not monitored, recommend visual inspection prior to LNDG. ATV cross Rwy 18 from TWY to THLD.

**AIRPORT MANAGER:** 907-842-5511**WEATHER DATA SOURCES:** AWOS-3P 121.45 (907) 868-7311. (WX CAM)**COMMUNICATIONS:** CTAF 122.9Ⓡ **ANCHORAGE CENTER APP/DEP CON** 132.75**RADIO AIDS TO NAVIGATION:** NOTAM FILE DLG.**DILLINGHAM (H) VOR/DME** 116.4 DLG Chan 111

N58°59.65' W158°33.13' 161° 9.7 NM to fld. 81/15E.

**COMM/NAV/WEATHER REMARKS:** For a toll free call to Kenai FSS dial  
1-866-864-1737

