

## SEYMOUR

**FREEMAN MUNI** (SER)(KSER) 2 SW UTC-5(-4DT) N38°55.46' W85°54.58'

583 B NOTAM FILE HUF

**RWY 05-23:** H6001X100 (ASPH-GRVD) S-115, D-180, 2D-300

MIRL

**RWY 05:** ODALS. REIL. PAPI(P2L)—GA 3.0° TCH 33'.

**RWY 23:** ODALS. REIL. PAPI(P2L)—GA 3.0° TCH 33'.

**RWY 14-32:** H5502X100 (ASPH-GRVD) S-20, D-35, 2D-50 MIRL

**RWY 14:** REIL. PAPI(P2L)—GA 3.0° TCH 24'. Crops.

**RWY 32:** REIL. PAPI(P2L)—GA 3.0° TCH 38'.

**RWY 18U-36U:** 1215X100 (TURF) 0.3% up N

**RWY 36U:** Rgt t/c.

**RWY 09U-27U:** 1104X100 (TURF) 0.4% up W

**SERVICE:** S2 FUEL 100LL, JET A1+ OX 4 LGT Actvt ODALS Rwy 05

& 23; REIL Rwy 05, 14, 23 & 32; PAPI Rwy 05, 14, 23 & 32—CTAF.

MIRL Rwy 05-23 & 14-32 preset on. Twy lgts from intersection Rwy

14-32 and Rwy 05-23 to apron only.

**AIRPORT REMARKS:** Attended 1300-2130Z†. Self serve avbl 24 hr. Rdo ctl actv ops on and invof arpt dly fm Apr—Oct.

**AIRPORT MANAGER:** 812-522-2031

**WEATHER DATA SOURCES:** AWOS-3 119.425 (812) 522-4244. Additional phone 1-888-782-3222

**COMMUNICATIONS:** CTAF/UNICOM 122.8

® **INDIANAPOLIS CENTER APP/DEP CON** 124.775

**CLEARANCE DELIVERY PHONE:** For CD ctc Indianapolis ARTCC at 317-247-2411.

**RADIO AIDS TO NAVIGATION:** NOTAM FILE LOU.

**LOUISVILLE (H) (H) VORTACW** 114.8 IIU Chan 95 N38°06.21' W85°34.65' 341° 51.6 NM to fld. 720/1E.

VOR unusable:

001°-025°

026°-090° blo 10,000'

100°-150° blo 9,000'

151°-180° blo 7,000'

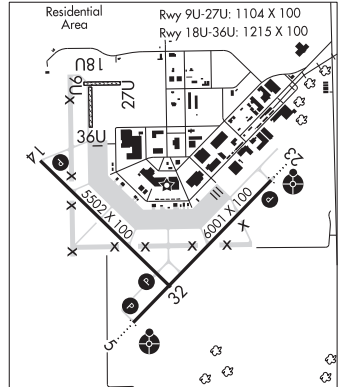
275°-330° byd 30 NM blo 4,000'

TACAN AZIMUTH unusable:

225°-275° blo 5,000'

DME unusable:

225°-275° blo 5,000'



**ST LOUIS**  
H-5E, 10F, L-27D  
IAP

**SHAWNEE FLD** (See BLOOMFIELD on page 97)