

## CONTINUED FROM PRECEDING PAGE

**AIRSPACE:** CLASS D svc 1200 Mon to 0400Z† Fri, 1200–0400Z† Sat, 1300–0500Z† Sun; other times CLASS G.

**RADIO AIDS TO NAVIGATION:** NOTAM FILE CLE.

**CHARDON (H) (DH) VOR/DME** 112.7 CXR Chan 74 N41°31.02' W81°09.79' 275° 23.4 NM to fld. 1317/5W.

VOR unusable:

074°–084° byd 10 NM blo 3,300'

085°–099° byd 10 NM blo 11,000'

104°–180° byd 10 NM blo 6,000'

357°–073° byd 10 NM blo 11,000'

DME unusable:

019°–029° byd 34 NM blo 3,700'

158°–174° blo 5,500'

253°–274° blo 4,100'

**ILS/DME** 109.75 I-BFT Chan 34(Y) Rwy 24R. Class IE. DME unusable byd 30° right of course.

**COMM/NAV/WEATHER REMARKS:** Emerg frequency 121.5 not available at twr.

**CLEVELAND—HOPKINS INTL** (CLE)(KCLE) 9 SW UTC–5(–4DT) N41°24.56' W81°51.28'

**DETROIT**

800 B AOE Class I, ARFF Index C NOTAM FILE CLE

**H–10G, L–30G**

**RWY 06R–24L:** H9953X150 (CONC–GRVD) S–100, D–185, 2S–175,

**IAP, AD**

2D–340 PCN 63 R/B/W/T HIRL CL

**RWY 06R:** MALSR. TDZL. PAPI(P4L)—GA 3.0° TCH 73'. RVR–TMR  
Thid dsplcd 1923'. Trees.

**RWY 24L:** MALSR. TDZL. PAPI(P4R)—GA 3.0° TCH 48'. RVR–TMR

**RWY 06L–24R:** H9000X150 (CONC–GRVD) S–75, D–200, 2S–175,

2D–400 PCN 78 R/B/W/T HIRL CL

**RWY 06L:** ALSF2. TDZL. PAPI(P4L)—GA 3.0° TCH 69'. RVR–TMR  
Trees.

**RWY 24R:** ALSF2. TDZL. PAPI(P4R)—GA 3.0° TCH 65'. RVR–TMR

**RWY 10–28:** H6018X150 (ASPH–CONC–GRVD) S–155, D–200,

2S–175, 2D–400 PCN 80 R/B/W/T HIRL 0.5% up E

**RWY 10:** REIL. PAPI(P4L)—GA 3.0° TCH 45'. RVR–R Tree.

**RWY 28:** MALSF. PAPI(P4R)—GA 3.0° TCH 45'. RVR–T Pole.

**RUNWAY DECLARED DISTANCE INFORMATION**

**RWY 06L:**TORA–9000 TODA–9000 ASDA–9000 LDA–9000

**RWY 06R:**TORA–9956 TODA–9956 ASDA–9956 LDA–8029

**RWY 10:**TORA–6018 TODA–6018 ASDA–6018 LDA–6018

**RWY 24L:**TORA–9956 TODA–9956 ASDA–9956 LDA–9956

**RWY 24R:**TORA–9000 TODA–9000 ASDA–9000 LDA–9000

**RWY 28:**TORA–6018 TODA–6018 ASDA–6018 LDA–6018

**ARRESTING GEAR/SYSTEM**

**RWY 10:** EMAS

**RWY 28:** EMAS

**SERVICE:** S4 FUEL 100LL, JET A1+ OX 1, 2, 3, 4 LGT PAPI unusbl byd 8° L&R of cntrln.

**NOISE:** All apchs are ovr noise sensitive areas. Arpt late ngt noise abatement procedures are in effect 0400–1100Z†.

Additional noise abatement procedures are in effect call amgr normal business hrs at 216–265–6090.

**AIRPORT REMARKS:** Attended continuously. Deer, coyotes, & birds inclg waterfowl on & invof arpt. ASSC in use. Operate transponders with altitude reporting mode and ADS–B (if equipped) enabled on all airport surfaces. Twys clsd Oct–Apr to support deicing ops: Twy M; Twy J2; Twy M1 btn Twy L & Twy J1; Twy M2 btn Twy L & Twy J1. Txl H clsd to acft with wingspan ovr 171 ft. Pad 2 and Taxilane Y1 rstd to Group II acft, less than 79' wingspan. Ramp area concourse D between gates D1, D28 clsd except acft wingspan less than 86'. Pad 3 bays 1–5 clsd to acft with wingspan over 134'. Pad 3 bay 6 clsd to acft with wingspan over 94'. Twy F clsd to acft with wingspan over 118'. NASA Glenn Research Center; NASA ramp PPR call 216–433–2031; Mon–Fri 1300–2230Z†. Contact NASA ops on freq 122.925 within 50 NM. Ldg Fee. ADCUS avbl dly 1200–0000Z†, ltd avblty durg off hrs; all reqrs for svc must be made with US Cust Svc ofc lctd at gate A–14 call 216–267–3600 durg listed hrs.

**AIRPORT MANAGER:** 216-265-6963

**WEATHER DATA SOURCES:** ASOS (216) 416–2729 TDWR.

**COMMUNICATIONS:** D–ATIS ARR 127.85 D–ATIS DEP 132.375 UNICOM 122.95

RCO 122.3 (CLEVELAND RADIO)

Ⓡ APP CON 126.55

Ⓡ DEP CON 128.25 135.875

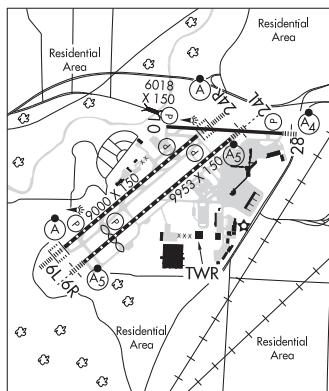
TOWER 124.5

GND CON 121.7 CLNC DEL 125.05

CPDLC (LOGON KUSA)

PDC

**AIRSPACE:** CLASS B See VFR Terminal Area Chart.



CONTINUED ON NEXT PAGE

## CONTINUED FROM PRECEDING PAGE

VOR TEST FACILITY (VOT) 110.4

RADIO AIDS TO NAVIGATION: NOTAM FILE CLE.

DRYER (VH) (DH) VOR/DME 113.6 DJB Chan 83 N41°21.48' W82°09.72' 082° 14.2 NM to fld. 780/5W.

VOR unusable:

001°-010° byd 40 NM  
 020°-024° byd 40 NM  
 034°-040° byd 40 NM  
 080°-095° byd 40 NM  
 110°-120° byd 40 NM  
 135°-145° byd 40 NM  
 135°-150°  
 155°-165°  
 160°-165° byd 40 NM  
 185°-195° byd 40 NM  
 187°-197°  
 210°-224° byd 40 NM  
 211°-218°  
 225°-235° byd 40 NM blo 11,000'  
 225°-235° byd 95 NM  
 225°-245° byd 20 NM blo 3,500'  
 245°-265° byd 40 NM  
 275°-285° byd 40 NM blo 18,000'  
 286°-355° byd 40 NM

DME unusable:

187°-197°  
 289°-310°  
 322°-332°  
 350°-060°

ILS/DME 111.55 I-LIZ Chan 52(Y) Rwy 06L. Class IIIE.

ILS/DME 111.9 I-CLE Chan 56 Rwy 06R. Class IIE.

ILS/DME 109.9 I-HPI Chan 36 Rwy 24L. Class IIE. LOC unusable byd 20° left of course.

ILS/DME 111.55 I-PVY Chan 52(Y) Rwy 24R. Class IIIE.

ILS/DME 110.7 I-XPX Chan 44 Rwy 28. Class IE.

COMM/NAV/WEATHER REMARKS: Freq 121.5 not avbl at FSS.

**CUYAHOGA CO** (CGF)(KCGF) 10 E UTC-5(-4DT) N41°33.88' W81°29.23'

876 B NOTAM FILE CGF

RWY 06-24: H5502X100 (ASPH-GRVD) S-90, D-123, 2D-213

PCN 35 F/C/X/U HIRL

RWY 06: REIL. PAPI(P4L)—GA 3.0° TCH 45'. Thld dsplcd 318'. Tree.

RWY 24: MALSR. PAPI(P4L)—GA 3.0° TCH 45'. Thld dsplcd 500'.  
 Road.

**RUNWAY DECLARED DISTANCE INFORMATION**

RWY 06: TORA-5502 TODA-5502 ASDA-5502 LDA-5184

RWY 24: TORA-5502 TODA-5502 ASDA-5502 LDA-5000

**ARRESTING GEAR/SYSTEM**

RWY 06: EMAS

RWY 24: EMAS

**SERVICE:** S4 FUEL 100LL, JET A, A+ OX 3 LGT When ATCT clsd  
 actvt MALSR Rwy 24; REIL Rwy 06; PAPI Rwy 06, HIRL Rwy 06-24;  
 windssocks—CTAF. PAPI Rwy 24 opr consly.

**NOISE:** Noise abatement procs in effect call arpt.

**AIRPORT REMARKS:** Attended 1100-0400Z†. For aft hrs svc call  
 216-261-8800 drg atndd hrs. Birds & wildlife on & invof arpt. Flt trg  
 prohibited 0400-1200Z†. ATCT vis SW ltd wi 500 ft AER Rwy 06.

**AIRPORT MANAGER:** 216-289-4111

**WEATHER DATA SOURCES:** AWOS-3PT (216) 289-4113

**COMMUNICATIONS:** CTAF 118.5 D-ATIS 119.95 (216)-289-4113

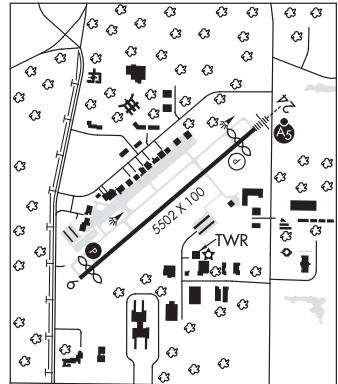
® CLEVELAND APP/DEP CON 125.35

COUNTY TOWER 118.5 (1200-0400Z†) GND CON 121.85 CLNC DEL 121.85 (When twr clsd)

CLEARANCE DELIVERY PHONE: For CD when ATCT clsd ctc Cleveland Apch at 216-352-2323.

AIRSPACE: CLASS D svc 1200-0400Z†; other time CLASS G.

DETROIT  
 H-10G, L-30G  
 IAP, AD



CONTINUED ON NEXT PAGE