

OHIO STATE UNIVERSITY (OSU)(KOSU) P (NG) 10 NW UTC-5(-4DT) N40°04.77' W83°04.39'

DETROIT

906 B ARFF Index—See Remarks NOTAM FILE OSU

H-10G, L-29A

RWY 09R-27L: H5004X100 (ASPH-GRVD) S-45, D-60

IAP, AD

PCN 17 F/B/X/T HIRL

RWY 09R: MALSR. PAPI(P4L)—GA 3.0° TCH 51'.

RWY 27L: REIL. PAPI(P4L)—GA 3.0° TCH 28'. Tree.

RWY 05-23: H3562X100 (ASPH) S-21, D-32 PCN 12 F/B/X/T

0.3% up SW

RWY 05: Trees.

RWY 23: Trees.

RWY 09L-27R: H2994X100 (ASPH) S-25.2 PCN 5 F/B/X/T MIRL

0.4% up W

RWY 09L: VASI(V2L)—GA 3.0° TCH 27'.

RWY 27R: VASI(V2L)—GA 3.0° TCH 31'. Trees.

RUNWAY DECLARED DISTANCE INFORMATION

RWY 05: TORA-3562 TODA-3562 ASDA-3562 LDA-3562

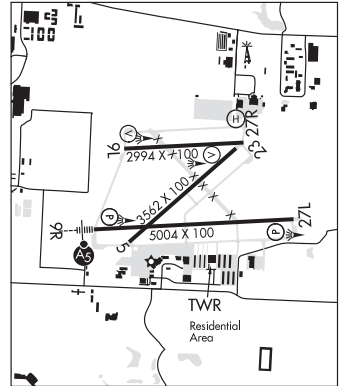
RWY 09L:TORA-2994 TODA-2994 ASDA-2994 LDA-2994

RWY 09R:TORA-5004 TODA-5004 ASDA-5004 LDA-5004

RWY 23: TORA-3562 TODA-3562 ASDA-3562 LDA-3562

RWY 27L:TORA-5004 TODA-5004 ASDA-5004 LDA-5004

RWY 27R:TORA-2994 TODA-2994 ASDA-2994 LDA-2994



SERVICE: S4 FUEL 100LL, JET A1+ OX 1, 2 LGT When ATCT clsd  
actvt MALSR Rwy 09R—CTAF. REIL Rwy 27L; PAPI Rwy 09R & 27L; VASI Rwy 09L & 27R; HIRL Rwy 09R-27L – opr  
consly med instst. MIRL Rwy 09L-27R – opr consly low instst. **MILITARY— FUEL** (NC-100LL, A1+)

NOISE: Noise sensitive area within 4 miles to the north and northeast. Noise abatement rstrns: No TGL or rptd tkof/ldng  
0400-1200Z± dly.

AIRPORT REMARKS: Attended 1100-0400Z±. Birds & deer on & invof arpt. Sfc conds unmon 0400-1200Z±. Rwy 05-23  
CLOSED dly SS-SR. All twys north of Rwy 09R-27L clsd to unsked acr ops gtr than 30 pax seats. Class IV, ARFF Index  
A. Clsd to skedd acr ops gtr than 9 pax seats; 90 day PPR for unsked acr ops gtr than 30 pax seats – call amgr. Rwy  
05-23 clsd to unsked acr ops gtr than 30 pax seats. Rwy 09L-27R clsd to unsked acr ops gtr than 30 pax seats. Closed  
ramp north of Twy G 24 hour PPR for use 614-292-5617. Snow removal operating procedures: when twr clsd, announce  
arrs/deps on freq 118.8.

AIRPORT MANAGER: 614-292-4229

WEATHER DATA SOURCES: ASOS 121.35 (614) 451-2465. LAWR5.

COMMUNICATIONS: CTAF 118.8 ATIS 121.35 UNICOM 122.95

Ⓜ COLUMBUS APP/DEP CON 125.95

STATE TOWER 118.8 (1200-0400Z±) GND CON 121.7 CLNC DEL 121.7

AIRSPACE: CLASS D svc 1200-0400Z±; other times CLASS G.

RADIO AIDS TO NAVIGATION: NOTAM FILE DAY.

APPLETON (VH) (H) VORTAC 116.7 APE Chan 114 N40°09.06' W82°35.30' 265° 22.7 NM to fld. 1354/6W.

VOR unusable:

025°-030°

TACAN AZIMUTH unusable:

075°-095°

110°-115°

DME unusable:

075°-080°

FULER NDB (MHW/LOM) 515 OS N40°04.42' W83°11.88' 091° 5.8 NM to fld. 941/5W. NOTAM FILE OSU.

ILS 108.5 I-OSU Rwy 09R. Class IT. LOM FULER NDB. Unmonitored.

COMM/NAV/WEATHER REMARKS: Emerg frequency 121.5 not avbl at twr.

HELIPAD H1: H40X40 (ASPH)

HELIPORT REMARKS: Heliport (unlit) located north side of airfield, adjacent Air Guard ramp, Twy G. Helicopter Indgs/tkfs  
prohibited on Twy A and all ramp area south of Twy A. Helicopters ground taxi if capable on Twy A abeam ramp. When  
able, helicopters use 1900 MSL as traffic pattern altitude.