

## EAU CLAIRE

CHIPPEWA VALLEY RGNL (EAU)(KEAU) 3 N UTC-6(-5DT) N44°51.95' W91°29.06'

GREEN BAY  
H-2J, L-14J  
IAP, AD

913 B Class I, ARFF Index B NOTAM FILE EAU

RWY 04-22: H8101X150 (CONC-GRVD) S-100, D-180, 2S-175,  
2D-320 PCN 54 R/B/W/T HIRL

RWY 04: REIL. PAPI(P4L)—GA 3.0° TCH 44'. Thld dsplcd 400'. Road.

RWY 22: MALSR. PAPI(P4L)—GA 3.0° TCH 50'. 0.6% down.

RWY 14-32: H5000X100 (ASP-CONC) S-40, D-60

PCN 21 R/B/W/T MIRL

RWY 14: REIL. PAPI(P4L)—GA 3.0° TCH 43'.

RWY 32: PAPI(P4L)—GA 4.0° TCH 70'.

## RUNWAY DECLARED DISTANCE INFORMATION

RWY 04: TORA-8101 TODA-8101 ASDA-8101 LDA-7701

RWY 14: TORA-5000 TODA-5000 ASDA-5000 LDA-5000

RWY 22: TORA-8101 TODA-8101 ASDA-7301 LDA-7301

RWY 32: TORA-5000 TODA-5000 ASDA-5000 LDA-5000

SERVICE: S4 FUEL 100LL, JET A OX 4 LGT When twr clsd HIRL Rwy

04-22 preset on low ints, to incr ints and ACTIVATE MALSR Rwy 22,

REIL Rwy 04 and REIL Rwy 14, HIRL Rwy 04-22, PAPI Rwy 14-32,

MIRL Rwy 14-32—CTAF. PAPI Rwy 04 and Rwy 22 opr 24 hours.

AIRPORT REMARKS: Attended 1300-0300Z†. Other attendance times call

715-839-4900. Arpt conditions unmonitored 0400-1100Z†. Deer

and birds on and invof arpt. ARFF not avbl 24 hrs. PPR for

unscheduled air carrier ops with more than 9 passenger seats; ctc arpt manager 715-839-6241. Air carrier ops with

more than 9 passenger seats not authorized in excess of 15 minutes before or after scheduled arrival/dep times without

PPR with arpt manager and confirmation ARFF is avbl prior to ldg or tkf. All GA acct park at FBO.

AIRPORT MANAGER: 715-839-6241

WEATHER DATA SOURCES: ASOS 126.025 (715) 832-7990.

COMMUNICATIONS: CTAF 118.575 ATIS 126.025 UNICOM 122.95

EAU CLAIRE RCO 122.2 (GREEN BAY RADIO)

® MINNEAPOLIS CENTER APP/DEP CON 125.3

EAU CLAIRE TOWER 118.575 (1130-0230Z†) GND CON 120.925

CLEARANCE DELIVERY PHONE: For CD if una to ctc on FSS freq, ctc Minneapolis ARTCC at 651-463-5588.

AIRSPACE: CLASS D svc 1130-0230Z†; other times CLASS E.

RADIO AIDS TO NAVIGATION: NOTAM FILE EAU.

EAU CLAIRE (VL) (H) VORTACW 113.65 EAU Chan 83(Y) N44°53.86' W91°28.71' 183° 1.9 NM to fld. 904/4E.

VOR unusable:

021°-031° byd 40 NM blo 6,000'

021°-031° byd 73 NM

097°-108° byd 40 NM blo 4,000'

097°-108° byd 73 NM

109°-124° byd 40 NM

125°-135° byd 40 NM blo 4,700'

125°-135° byd 55 NM

136°-157° byd 40 NM

158°-168° byd 40 NM blo 3,500'

158°-168° byd 47 NM

169°-181° byd 40 NM blo 4,700'

169°-181° byd 64 NM

182°-245° byd 40 NM

246°-256° byd 40 NM blo 4,600'

246°-256° byd 50 NM

257°-280° byd 40 NM

281°-291° byd 40 NM blo 3,400'

281°-291° byd 47 NM

292°-335° byd 40 NM

336°-346° byd 40 NM blo 4,000'

336°-346° byd 49 NM blo 6,000'

336°-346° byd 64 NM

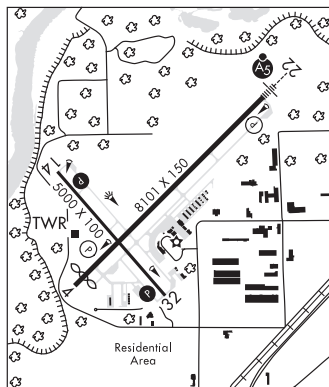
347°-020° byd 40 NM

134°-144° byd 14 NM blo 6,900'

210°-220° byd 23 NM

255°-265° byd 20 NM blo 5,000'

ILS/DME 109.5 I-EAU Chan 32 Rwy 22. Class IE. Backcourse unusable by 10 NM blo 2,500'. LOM unmonitored.



EAU CLAIRE LAKES (See DRUMMOND on page 346)