

PEORIA

GENERAL DOWNING — PEORIA INTL (PIA)(KPIA) P (ANG ARNG) 4 W UTC-6(-5DT) N40°39.85'

CHICAGO
H-5D, L-27C
IAP, AD

W89°41.60'

661 B LRA Class I, ARFF Index B NOTAM FILE PIA

RWY 13-31: H10104X150 (CONC-GRVD) S-100, D-175, 2S-175,
2D-310 PCN 80 F/C/X/T HIRL

RWY 13: MALSR. PAPI(P4R)—GA 3.0° TCH 57'. RVR-R Thld dsplcd
500'. Tree.

RWY 31: MALSR. RVR-T Tree.

RWY 04-22: H8004X150 (ASPH-GRVD) S-100, D-175, 2S-175,
2D-300 PCN 81 F/C/X/T HIRL 0.3% up NE

RWY 04: MALSR. PAPI(P4R)—GA 3.0° TCH 54'. RVR-TR Tree.

RWY 22: PAPI(P4L)—GA 3.0° TCH 45'. Tree.

RUNWAY DECLARED DISTANCE INFORMATION

RWY 04: TORA-8004 TODA-8004 ASDA-7826 LDA-7826

RWY 13: TORA-10104 TODA-10104 ASDA-9604 LDA-9604

RWY 22: TORA-8004 TODA-8004 ASDA-8004 LDA-8004

RWY 31: TORA-10104 TODA-10104 ASDA-10104 LDA-10104

SERVICE: S4 FUEL 100LL, JET A, A++ OX 1, 2 LGT Rwy 22 PAPI
unusbl byd 9° rgt of cntrn. **MILITARY— JASU** (A/M32A-86) 1(MD-3A)
2(AM32-95) FUEL A++(Mil) (NC-100LL, A) FLUID PRESAIR LOX OIL
O-128(MIL)

AIRPORT REMARKS: Attended continuously. Birds on and invof arpt. Portion
of Twy A-5 not visible from twr due to a building. Lgtd P-line Rwy 04 apch.

MILITARY REMARKS: ANG OPS Call TORCH OPS 20 min prior to ldg.

AIRPORT MANAGER: 309-697-8272

WEATHER DATA SOURCES: ASOS (309) 697-3611 LLWAS.

COMMUNICATIONS: ATIS 126.1 UNICOM 122.95

PEORIA RCO 122.5 (KANKAKEE RADIO)

Ⓡ SAINT LOUIS APP/DEP CON 125.8

TOWER 124.0 GND CON 121.85 CLNC DEL 124.675

AIRSPACE: CLASS C svc ctc APP CON.

RADIO AIDS TO NAVIGATION: NOTAM FILE PIA.

PEORIA (L) (L) VORTACW 115.2 PIA Chan 99 N40°40.80' W89°47.57' 098° 4.6 NM to fld. 731/4E.

VOR portion unusable:

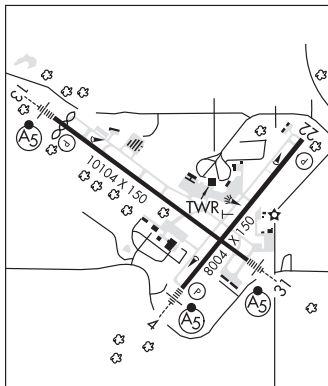
009°-019° byd 25 NM blo 8,000'

TUNGG NDB (MHW/LOM) 356 PI N40°36.34' W89°35.59' 310° 5.8 NM to fld. 602/2W.

ILS/DME 110.55 I-RNX Chan 42(Y) Rwy 04. Class IIE.

ILS 109.9 I-GZX Rwy 13. Class IA.

ILS 109.9 I-PIA Rwy 31. Class IA. LOM TUNGG NDB.



MOUNT HAWLEY AUXILIARY (3MY) 7 N UTC-6(-5DT) N40°47.75' W89°36.81'

CHICAGO
L-27C
IAP

793 B NOTAM FILE IKK

RWY 18-36: H4001X60 (ASPH) S-20 MIRL 0.5% up N

RWY 36: REIL. VASI(V4L)—GA 3.5° TCH 32'.

SERVICE: S4 FUEL 100LL, JET A OX 3, 4 LGT ACTIVATE REIL and
VASI Rwy 36—CTAF, MIRL Rwy 18-36 operates SS-SR.

AIRPORT REMARKS: Attended dawn-dusk. Fuel 24 hr 100LL and Jet A avbl
with credit card.

AIRPORT MANAGER: 309-697-8272

COMMUNICATIONS: CTAF/UNICOM 122.7

Ⓡ SAINT LOUIS APP/DEP CON 125.8

CLNC DEL 121.6

RADIO AIDS TO NAVIGATION: NOTAM FILE PIA.

PEORIA (L) (L) VORTACW 115.2 PIA Chan 99 N40°40.80'

W89°47.57' 046° 10.7 NM to fld. 731/4E.

VOR portion unusable:

009°-019° byd 25 NM blo 8,000'

