

JEFFERSON CITY MEML (JEF)(KJEF) P (ARNG) 2 NE UTC-6(-5DT) N38°35.47' W92°09.37'

KANSAS CITY

549 B NOTAM FILE JEF

H-5D, L-27B

RWY 12-30: H6000X100 (CONC-GRVD) S-85, D-104, 2D-168

IAP, AD

PCN 32 R/D/W/T HIRL

RWY 12: REIL. VASI(V4L)—GA 3.5° TCH 64'.

RWY 30: MALS. VASI(V4L)—GA 3.0° TCH 50'.

RWY 09-27: H3401X75 (CONC) S-33.5, D-44 PCN 11 R/D/W/T MIRL

RWY 09: REIL. PAPI(P4L)—GA 3.0° TCH 23'. Hangar.

RWY 27: REIL. PAPI(P4L)—GA 3.0° TCH 29'. Trees.

SERVICE: S4 **FUEL** 100LL, JET A **OX** 3, 4 **LGT** When twr clsd
 ACTIVATE MALS. RWY 30; REIL RWYS 09, 12, 27; HIRL RWY 12-30; Twy A lghts—CTAF. VASI RWY 12 and RWY 30 opr continuously. **MILITARY—FUEL** J8 (Mil - Avbl 1230-0000Z± Mon-Fri, 24 hr PN, C573-526-9786), A+ (avbl 1230-0230Z± Mon-Fri, 1400-0000Z± Sat-Sun and hol, C573-636-5118, OT 2 hr PN C573-680-3015.) (NC-100LL, A)

AIRPORT REMARKS: Attended 1230-0230Z±. Fuel avbl from 0630-2030Z±. Light to moderate bird activity invof arpt. ARFF avbl with PPR 24 hours 573-634-6469. Entrances to east and south hangars, not visible by twr.

AIRPORT MANAGER: 573-634-6469

WEATHER DATA SOURCES: ASOS 133.625 (573) 635-9266.

COMMUNICATIONS: CTAF 125.6 **UNICOM** 122.95

RCO 122.4 (COLUMBIA RADIO)

® **MIZZU APP/DEP CON** 124.375

TOWER 125.6 (1200-0330Z±) **GND CON** 121.7

ARNG OPS 41.65 142.4 242.4 **NG OPS** 118.55

CLEARANCE DELIVERY PHONE: For CD ctc Mizzou Apch at 417-868-5620/5619.

AIRSPACE: CLASS D svc 1200-0330Z±; other times CLASS E.

VOR TEST FACILITY (VOT) 112.0

RADIO AIDS TO NAVIGATION: NOTAM FILE COU.

COLUMBIA (L) (L) VORW/DME 110.2 COU Chan 39 N38°48.65' W92°13.10' 167° 13.5 NM to fld. 883/0E.

VOR unusable:

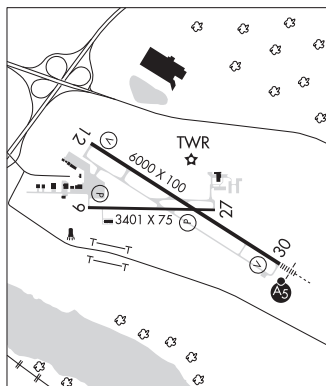
088°-101°

240°-250° byd 10NM blo 14,900'

251°-280° byd 10NM blo 11,900'

ALGOA NDB (MHW) 397 JE N38°32.88' W92°04.30' 300° 4.7 NM to fld. 585/3E. NOTAM FILE JEF.

ILS/DME 110.5 I-JEF Chan 42 Rwy 30. Class IE. LOM ALGOA NDB. ILS/DME unmonitored when ATCT closed.



JERRY SUMNERS SR AURORA MUNI (See AURORA on page 220)

JESSE VIERTEL MEML (See BOONVILLE on page 222)