

MALDEN RGNL (MAW)(KMAW) 3 N UTC-6(-5DT) N36°35.89' W89°59.55'

ST LOUIS

295 B NOTAM FILE STL

H-6J, L-16H

RWY 18-36: H5010X100 (ASPH) S-33, D-48 MIRL

RWY 18: REIL. PAPI(P4L)—GA 3.0° TCH 42'. Rgt tfc.

RWY 36: REIL. PAPI(P4R)—GA 3.0° TCH 42'.

RWY 14-32: H5001X80 (ASPH) S-33, D-48 MIRL

RWY 14: REIL. Rgt tfc.

RWY 32: REIL. PAPI(P4R)—GA 3.0° TCH 41'.

SERVICE: S2 FUEL 100LL, JET A1+ LGT Actvt REIL Rwy 14-32 and 18-36; PAPI Rwy 18, 36 and 32; MIRL Rws 14-32 and 18-36—CTAF. Rwy 32 REIL OTS indefinitely.

AIRPORT REMARKS: Attended Mon-Fri 1400-2300Z±. Permanent aerobatic practice box, sfc-5000', west of rws. A/G test flying. Crop dusting acft on and invof arpt. Fuel regular and after hrs, call in advance for Jet A1 573-776-4406. 24 hr access to pilots lounge, enter UNICOM on lock for access. Irrigation system may be operating within 300' of Rwy 18 and Rwy 32 ends and sides.

AIRPORT MANAGER: 573-276-2279

WEATHER DATA SOURCES: AWOS-3PT 119.825 (573) 276-9970.

COMMUNICATIONS: CTAF/UNICOM 122.8

MALDEN RCO 122.6 (SAINT LOUIS RADIO)

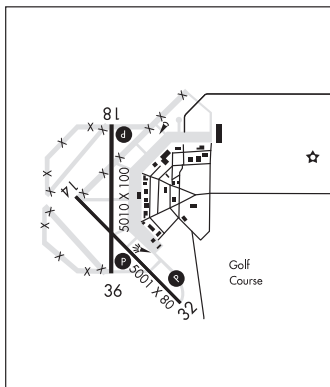
Ⓜ MEMPHIS CENTER APP/DEP CON 133.65

GCO 135.075 (4 clicks to MEMPHIS CENTER and 6 clicks to FSS)

CLEARANCE DELIVERY PHONE: For CD if una via GCO etc Memphis ARTCC at 901-368-8453/8449.

RADIO AIDS TO NAVIGATION: NOTAM FILE STL.

(L) TACAN Chan 49 MAW (111.2) N36°33.31' W89°54.69' 300° 4.7 NM to fld. 280/3E.



MANSFIELD MUNI (Ø3B) 2 NW UTC-6(-5DT) N37°07.61' W92°37.30'

KANSAS CITY

1520 B NOTAM FILE COU

L-16G

RWY 07-25: H3000X50 (ASPH-AFSC) S-12.5 MIRL 0.5% up W

RWY 07: Trees.

RWY 25: Trees.

AIRPORT REMARKS: Unattended. Deer and other wildlife on and invof arpt.

Rwy 07-25 sev deterioration and crumbling entire length of rwy.

AIRPORT MANAGER: 417-924-2782

COMMUNICATIONS: CTAF 122.9

CLEARANCE DELIVERY PHONE: For CD etc Springfield Apch at 417-868-5620/5619.

RADIO AIDS TO NAVIGATION: NOTAM FILE COU.

DOGWOOD (VL) (L) VORTAC 109.4 DGD Chan 31 N37°01.41'

W92°52.62' 062° 13.7 NM to fld. 1600/1E.

VOR unusable:

032°-042° byd 40 NM

284°-294° byd 21 NM blo 12,000'

284°-294° byd 9 NM blo 6,000'

285°-296° byd 40 NM

