

WAYNESVILLE—ST ROBERT RGNL FORNEY FLD (TBN)(KTBN) MIL/CIV A 0 SW UTC-6(-5DT)

KANSAS CITY
H-5D, L-16G
IAP, AD

N37°44.50' W92°08.44'
1160 B Class II, ARFF Index A NOTAM FILE TBN
RWY 15-33: H6037X150 (ASPH) PCN 54 F/A/W/T HIRL
RWY 15: MALSR. REIL. PAPI(P4L)—GA 3.0° TCH 50'. RVR-R Thld dspclcd 502'. Pole.
RWY 33: MALS. REIL. PAPI(P4R)—GA 3.0° TCH 36'. RVR-T Thld dspclcd 527'. Road. Rgt t/c.

SERVICE: FUEL 100LL, JET A LGT When twr clsd ACTVT MALS Rwy 33; MALSR Rwy 15; REIL Rwy 15 and 33; PAPI Rwy 15 and 33; HIRL Rwy 15-33—CTAF. Rwy 15 PAPI unusbl 8 degs left of cntrln. Rwy 33 PAPI unusbl byd 8 degs left and 8 degs right of cntrln.
MILITARY—FUEL No Mil Fuel Avbl. CIV: NC A — avbl 1400-2300Z± OT C573-329-4216. 100LL avbl 24 hr with credit card.

AIRPORT REMARKS: Attended Mon-Fri 1400-2300Z±. Excluding hols. Surface visibility limited by tree line from east to south to west. Arr and dep lrg acft must use the Alpha Twy int at the SE EOR 15-33 to aces and exit the rwy. Arr and dep lrg acft are required to back-taxi on the rwy.

MILITARY REMARKS: Opr 1300-0400Z± Mon-Fri exc hol. **CAUTION** South end of rwy safety zone unprotected when twr clsd. **RSTD** PPR for all transient military acft DSN 581-0165/4819, C573-596-0165/4819. Civ FBO ramp clsd to mil acft. **MISC** Wx svc avbl Mon-Fri exc hol 1300-0400Z±. AN/FMQ-19 automated observing sys in use, augmented by human obsn when necessary during afld hrs. OT remote briefing svc avbl 26 OWS Barksdale AFB DSN 781-4775, C318-456-4775, C866-223-2398 (toll free).

AIRPORT MANAGER: 573-596-0165
WEATHER DATA SOURCES: ASOS 118.7. Frequency: 229.4

COMMUNICATIONS: CTAF 125.4 D-ATIS 118.7 229.4

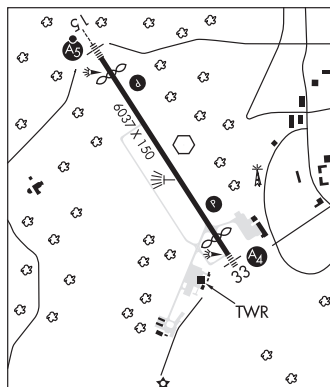
Ⓡ **KANSAS CITY CENTER APP/DEP CON** 128.35 284.675
FORNEY TOWER 125.4 268.7 (1300-0400Z± Mon-Fri except holidays) **GND CON** 123.75 256.8
FORNEY OPS 122.95 237.5 **ARNG OPS** 32.125 140.2 245.7

CLEARANCE DELIVERY PHONE: When ATCT clsd, for CD ctc Kansas City ARTCC at 913-254-8508.

AIRSPACE: CLASS D svc 1300-0400Z± Mon-Fri exc hol; other times CLASS G.

RADIO AIDS TO NAVIGATION: NOTAM FILE TBN.

FORNEY (L) VORW 110.0 TBN N37°44.55' W92°08.34' at fld. 1155/OE. VOR unmonitored when twr clsd.
ILS/DME 110.9 I-TBN Chan 46 Rwy 15. Unmonitored when twr clsd. ILS classificaton code ie.



WEST PLAINS RGNL (UNO)(KUNO) 10 NW UTC-6(-5DT) N36°52.71' W91°54.16'

KANSAS CITY
H-6J, L-16G
IAP

1228 B NOTAM FILE UNO
RWY 18-36: H5101X75 (ASPH) S-30, D-39 MIRL
RWY 18: REIL. PAPI(P2L)—GA 3.0° TCH 37'.
RWY 36: REIL. PAPI(P2L)—GA 3.0° TCH 37'.

SERVICE: FUEL 100LL, JET A LGT ACTIVATE MIRL Rwy 18-36, PAPI Rwy 18 and Rwy 36 and REIL Rwy 18 and 36 after 0400Z±—CTAF.
AIRPORT REMARKS: Attended 1400-2300Z±. For attendant after 2300Z± call 417-257-1539 or 417-274-4043. Helicopter ops on and invof arpt. Ultralights on and in vicinity of arpt.

AIRPORT MANAGER: 417 372-3997
WEATHER DATA SOURCES: ASOS 123.825 (417) 257-1313.

COMMUNICATIONS: CTAF/UNICOM 122.8

RCO 122.4 (COLUMBIA RADIO)

Ⓡ **MEMPHIS CENTER APP/DEP CON** 120.075
CLEARANCE DELIVERY PHONE: For CD ctc Memphis ARTCC at 901-368-8453/8449.

RADIO AIDS TO NAVIGATION: NOTAM FILE UNO.
HUTTON (L) DME 111.6 HUW Chan 53 N36°52.28' W91°54.00' at fld. 1222.

