

DUBUQUE RGNL (DBQ)(KDBQ) 7 SW UTC-6(-5DT) N42°24.12' W90°42.57'

CHICAGO

1076 B Class I, ARFF Index B NOTAM FILE DBQ

H-5D, L-28G

RWY 13-31: H6502X100 (CONC-GRVD) S-75, D-125, 2S-159,

IAP, AD

2D-215 PCN 57 R/C/X/T HIRL

RWY 13: MALS. PAPI(P4R)—GA 3.0° TCH 44'.**RWY 31:** MALS. PAPI(P4L)—GA 3.0° TCH 57'. Pole.**RWY 18-36:** H6327X150 (CONC-GRVD) S-75, D-173, 2S-175,

2D-275 PCN 59 R/C/X/T HIRL 0.6% up N

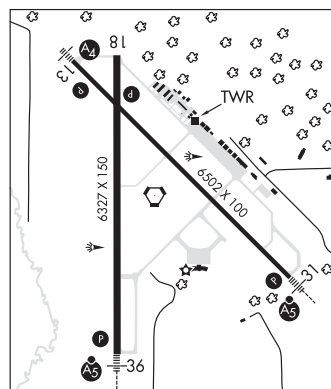
RWY 18: REIL. PAPI(P4L)—GA 3.0° TCH 34'. RVR-R**RWY 36:** MALS. PAPI(P4L)—GA 3.0° TCH 51'. RVR-T**LAND AND HOLD—SHORT OPERATIONS**

LDG RWY	HOLD—SHORT POINT	AVBL LDG DIST
RWY 31	18-36	4800
RWY 36	13-31	4900

RUNWAY DECLARED DISTANCE INFORMATION**RWY 13:** TORA-6502 TODA-6502 ASDA-6502 LDA-6502**RWY 18:** TORA-6327 TODA-6327 ASDA-6327 LDA-6327**RWY 31:** TORA-6502 TODA-6502 ASDA-6502 LDA-6502**RWY 36:** TORA-6327 TODA-6327 ASDA-6327 LDA-6327**SERVICE:** S4 FUEL 100LL, JET A1+ OX 1, 3 LGT When ATCT clsd

ACTVT MALS. RWys 31 and 36; MALS Rwy 13; REIL Rwy 18; PAPI

RWys 13, 18, 31 and 36; HIRL RWys 13-31 and 18-36—CTAF.



AIRPORT REMARKS: Attended 1200-0400Z±. Waterfowl on and in/ov arpt. Fuel svc avbl 24 hrs. For fuel 0400-1100Z± call 563-589-4136. 100LL self service fuel station avbl at T-hangars 24 hrs. Acft departing Rwy 36, the apch ends of Rwy 31 and Rwy 18 are not visible for approximately the first 3000' of tkf roll. Dashed twy edge marking adj to Twy A edge and GA apn define the movmt/non-movmt area bndry. Non-movmt area bndry marking on the GA apns are the wingtip clnc line - TOFA bndry.

AIRPORT MANAGER: 563-589-4136**WEATHER DATA SOURCES:** ASOS (563) 557-2579 LAWRS.**COMMUNICATIONS:** CTAF 119.5 ATIS 127.25 UNICOM 122.95

RCO 122.05 (FORT DODGE RADIO)

Ⓡ CHICAGO CENTER APP/DEP CON 133.95

TOWER 119.5 (1200-0400Z±) GND CON 121.8

CLEARANCE DELIVERY PHONE: For CD if una to ctc on FSS freq, ctc Chicago ARTCC at 630-906-8921.**AIRSPACE:** CLASS D svc 1200-0400Z±; other times CLASS G.**RADIO AIDS TO NAVIGATION:** NOTAM FILE DBQ.

(VH) (H) VORTACW 115.8 DBQ Chan 105 N42°24.09' W90°42.54' at fld. 1051/4E.

TACAN AZIMUTH unusable:

170°-265° blo 17,500'

DME unusable:

171°-199°

VOR unusable:

021°-028° byd 40 NM

064°-073° byd 40 NM

107°-117° byd 40 NM

199°-218° byd 40 NM

325°-335° byd 40 NM

LOC/DME 108.7 I-DBQ Chan 24 Rwy 31. Unmonitored when ATCT clsd. DME unusable byd 10 NM.

ILS/DME 110.9 I-FUQ Chan 46 Rwy 36. Class I E. Glideslope unusable for cpd apch blw 1,200' MSL.

COMM/NAV/WEATHER REMARKS: Emergency frequency 121.5 not avbl at twr.**DYERSVILLE AREA** (IA8) 2 NW UTC-6(-5DT) N42°29.77' W91°10.79'

CHICAGO

980 NOTAM FILE FOD

RWY 11-29: 2700X120 (TURF) LIRL(NSTD) 0.4% up W**RWY 11:** Thld dspclcd 200'. Ground.**RWY 29:** Thld dspclcd 175'. Road. Rgt tfe.**SERVICE:** LGT ACTIVATE LIRL Rwy 11-29—CTAF. Rwy 11-29 NSTD LIRL, cones with lights.**AIRPORT REMARKS:** Unattended: call 319-480-0596 in advan. Remote controlled aircraft in/ov arpt. Rwy 11-29 NSTD markings, rwy edges marked with yellow cones, dspclcd thlds marked with 3 yellow cones each side.**AIRPORT MANAGER:** 319-480-0596**COMMUNICATIONS:** CTAF 122.9**CLEARANCE DELIVERY PHONE:** For CD ctc Chicago ARTCC at 630-906-8921.